

The background of the entire page is a photograph of a green tractor plowing a brown field. In the distance, there are green trees and a clear blue sky. The tractor is moving from left to right, leaving a furrow in the soil.

The Great Grid Upgrade

Eastern Green Link 3 (EGL 3) and
Eastern Green Link 4 (EGL 4)

English Offshore Scheme General Arrangement Plans

May 2025

To assist with understanding these drawings
please see the **Guide to Consultation
Documents and Drawings**.

national**grid**

Contents

Plan Title	Section No.
English Offshore Scheme General Arrangement Plans	
Offshore Key Plan	01
Offshore General Arrangements (Sheets 1 - 12)	02

The Great Grid Upgrade

Eastern Green Link 3 (EGL 3) and
Eastern Green Link 4 (EGL 4)

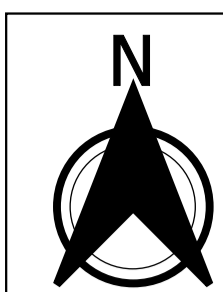
01. Offshore Key Plan

nationalgrid

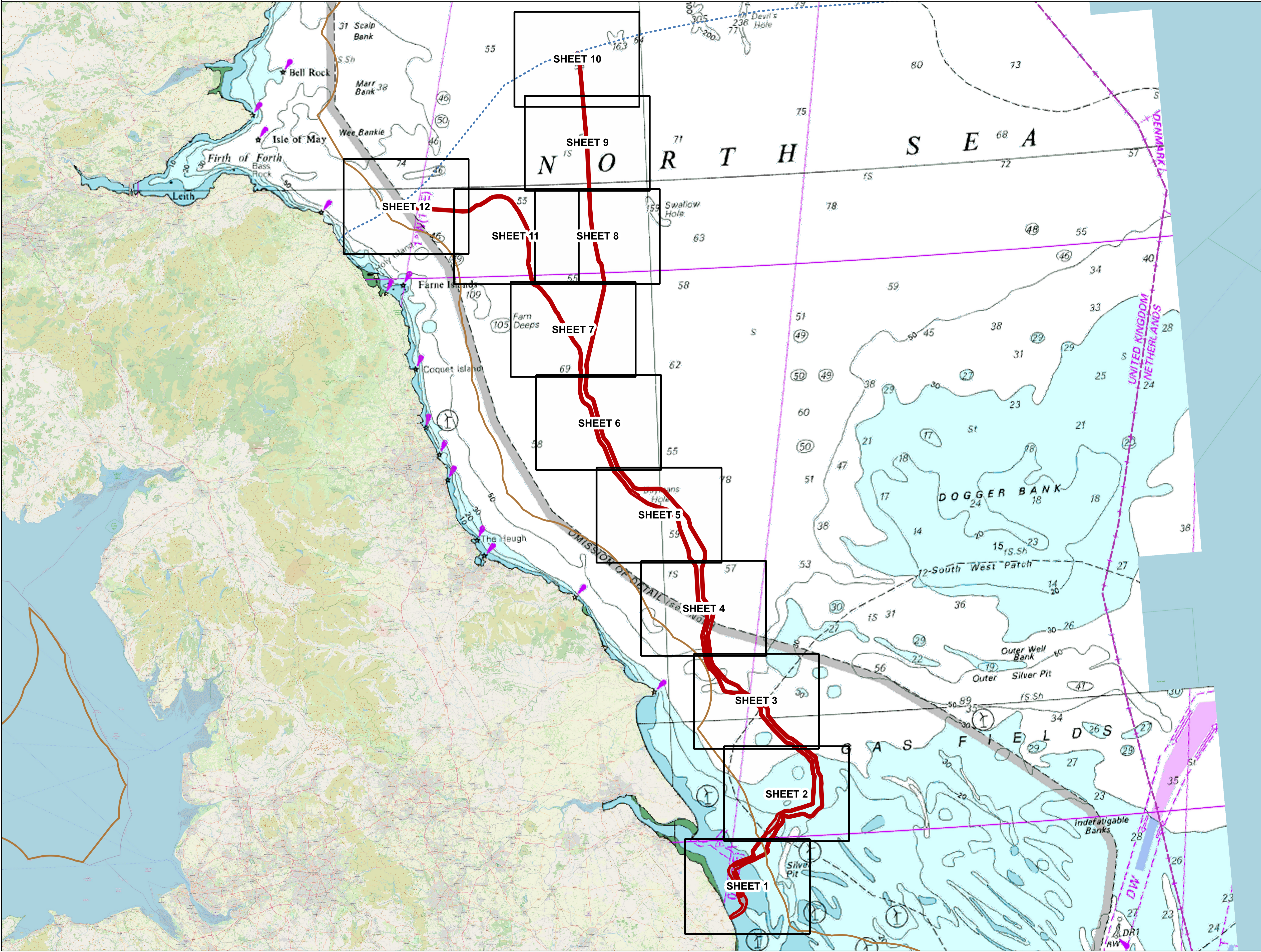
01. Offshore Key Plan

Drawing Category	Plan Title	Drawing Reference
English Offshore Scheme General Arrangement Plans	Offshore Key Plan	C01494-EGL3&4-LOC-009-A Rev 01

To assist with understanding these drawings please see the **Guide to Consultation Documents and Drawings**.



MASTER KEY PLAN FOR CONSULTATION - MARINE - SHEET 1 OF 1



- Legend**
- Draft Order Limits
 - 12NM Limit
 - Scottish Adjacent Waters
 - EEZ

Notes
This drawing is scaled at paper size A1, therefore any prints taken at smaller sizes will affect accuracy of the measurement units and should not be scaled against.



Centroid
Coordinate X: 527195.8194014924
Coordinate Y: 6061080.713138645



Base map and data from OpenStreetMap and OpenStreetMap Foundation (CC-BY-SA).
<https://www.openstreetmap.org> and contributors.
UKHO-Contains public sector information licensed under the Open Government Licence v3.0. Contains Ordnance Survey data © Crown copyright and database right 2025.

v01	03/04/2025	-	AN	JC	JDM
Issue	Date	Remarks	Drawn	Checked	Approved

Title:

MASTER KEY PLAN FOR CONSULTATION
MARINE
SHEET 1 OF 1

nationalgrid

Figure number: MASTER KEY PLAN

Drawing reference: C01494-EGL384-LOC-009-A

Scale: 1:1,500,000	Sheet size: A1	Sheet: SHEET 1 OF 1	Issue: 01
-----------------------	-------------------	------------------------	--------------

The Great Grid Upgrade

Eastern Green Link 3 (EGL 3) and
Eastern Green Link 4 (EGL 4)

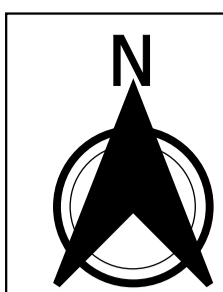
02. Offshore General Arrangements (Sheets 1 - 12)

nationalgrid

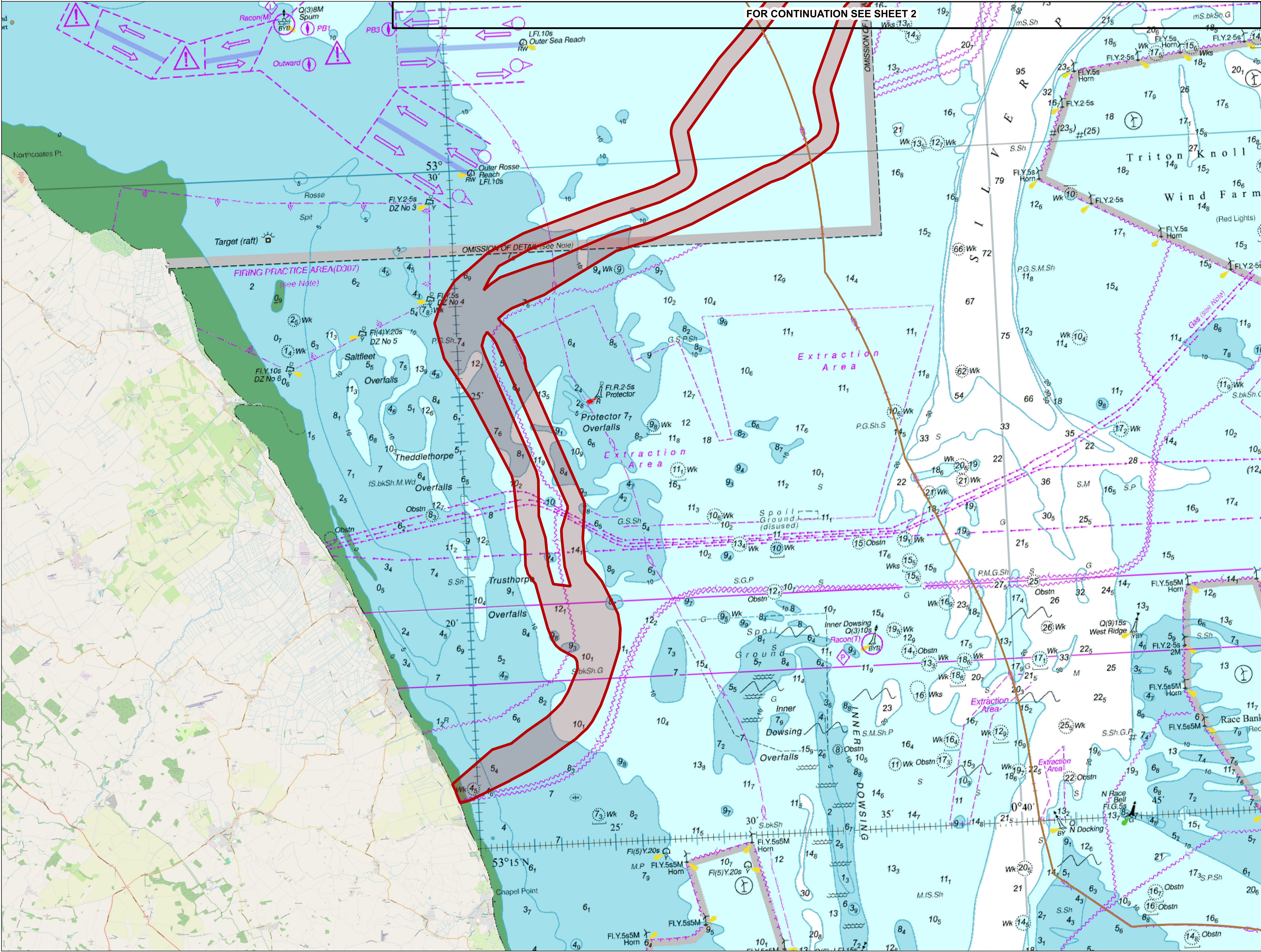
02. Offshore General Arrangements (Sheets 1 - 12)

Drawing Category	Plan Title	Drawing Reference
English Offshore Scheme General Arrangement Plans	Offshore General Arrangements Sheet 1 of 12	C01494-EGL3&4-LOC-010-A Rev 01
	Offshore General Arrangements Sheet 2 of 12	C01494-EGL3&4-LOC-011-A Rev 01
	Offshore General Arrangements Sheet 3 of 12	C01494-EGL3&4-LOC-012-A Rev 01
	Offshore General Arrangements Sheet 4 of 12	C01494-EGL3&4-LOC-013-A Rev 01
	Offshore General Arrangements Sheet 5 of 12	C01494-EGL3&4-LOC-014-A Rev 01
	Offshore General Arrangements Sheet 6 of 12	C01494-EGL3&4-LOC-015-A Rev 01
	Offshore General Arrangements Sheet 7 of 12	C01494-EGL3&4-LOC-016-A Rev 01
	Offshore General Arrangements Sheet 8 of 12	C01494-EGL3&4-LOC-017-A Rev 01
	Offshore General Arrangements Sheet 9 of 12	C01494-EGL3&4-LOC-018-A Rev 01
	Offshore General Arrangements Sheet 10 of 12	C01494-EGL3&4-LOC-019-A Rev 01
	Offshore General Arrangements Sheet 11 of 12	C01494-EGL3&4-LOC-020-A Rev 01
	Offshore General Arrangements Sheet 12 of 12	C01494-EGL3&4-LOC-021-A Rev 01

To assist with understanding these drawings please see the **Guide to Consultation Documents and Drawings**.

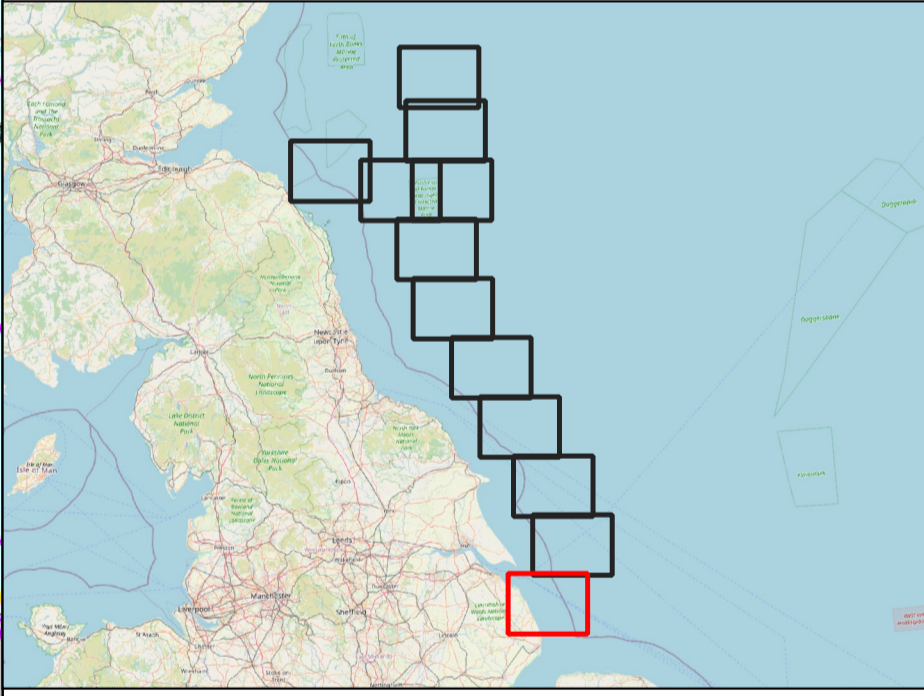


GENERAL ARRANGEMENT PLAN SERIES FOR CONSULTATION - SHEET 1 OF 12



- Legend**
- Draft Order Limits
 - 12NM Limit
 - Scottish Adjacent Waters
 - EEZ

Notes
This drawing is scaled at paper size A1, therefore any prints taken at smaller sizes will affect accuracy of the measurement units and should not be scaled against.



Centroid
Coordinate X: 676323.3882972708
Coordinate Y: 6087397.342943782



Base map and data from OpenStreetMap and OpenStreetMap Foundation (CC-BY-SA).
https://www.openstreetmap.org and contributors.
UKHO-Contains public sector information licensed under the Open Government Licence v3.0. Contains Ordnance Survey data © Crown copyright and database right 2025.

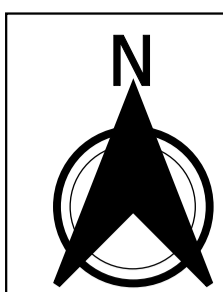
v01	02/04/2025		AN	JC	JDM
Issue	Date	Remarks	Drawn	Checked	Approved

Title:

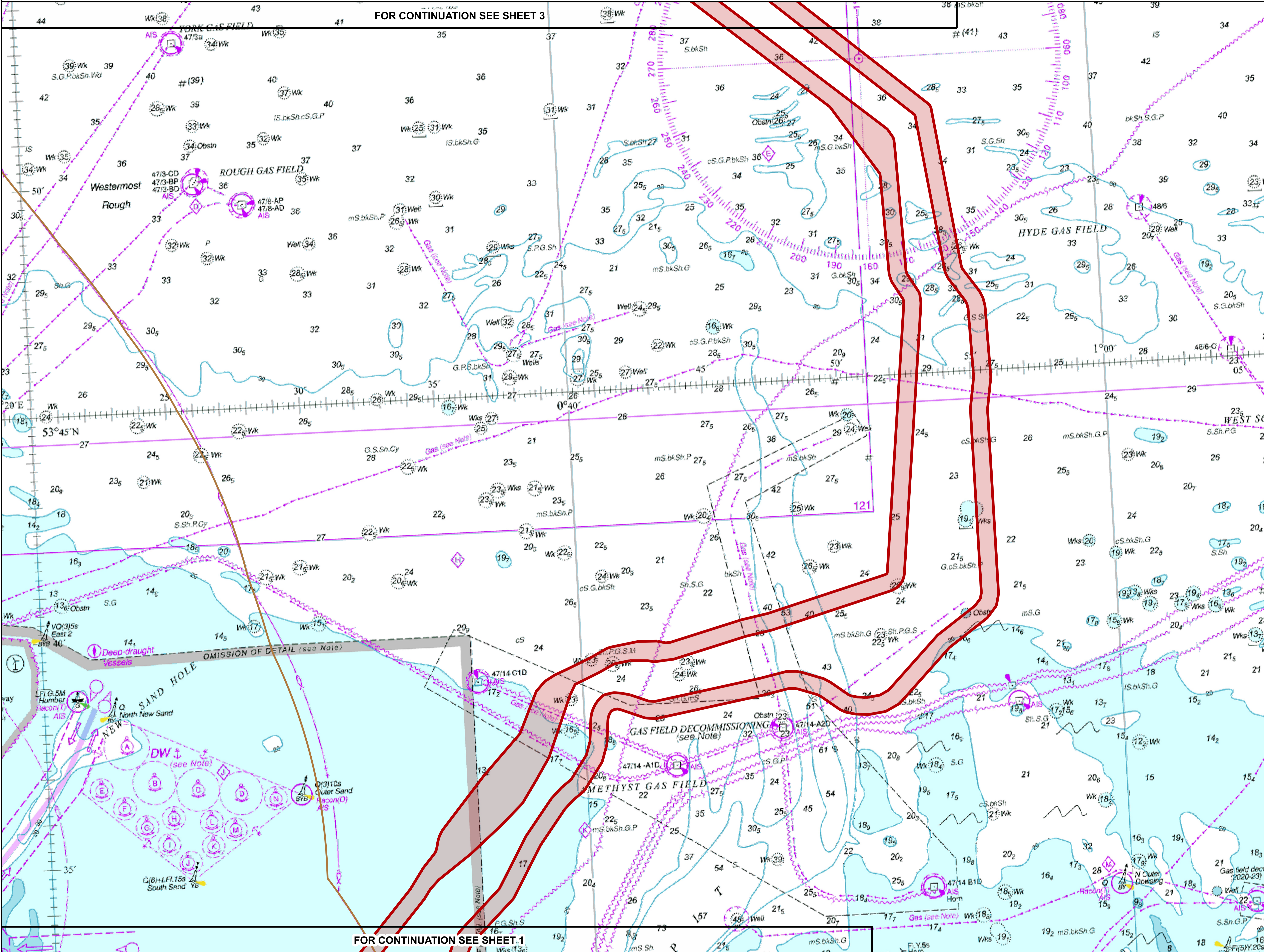
GENERAL ARRANGEMENT PLAN SERIES FOR CONSULTATION - SHEET 1 OF 12

nationalgrid

Figure number:		SHEET 1	
Drawing reference:		C01494-EGL384-LOC-010-A	
Scale:	Sheet size:	Sheet:	Issue:
1:150,000	A1	SHEET 1 OF 12	01



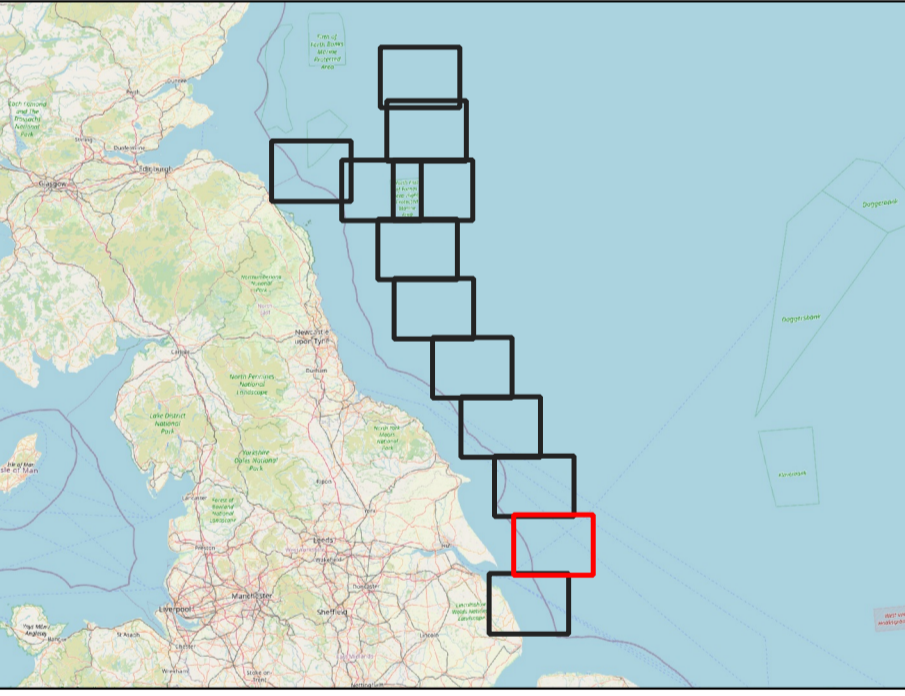
GENERAL ARRANGEMENT PLAN SERIES FOR CONSULTATION - SHEET 2 OF 12



Legend

- Draft Order Limits
- 12NM Limit
- Scottish Adjacent Waters
- EEZ

Notes
This drawing is scaled at paper size A1, therefore any prints taken at smaller sizes will affect accuracy of the measurement units and should not be scaled against.



Centroid
Coordinate X: 676323.3882972708
Coordinate Y: 6087397.342943782



Base map and data from OpenStreetMap and OpenStreetMap Foundation (CC-BY-SA).
UKHO-Contains public sector information licensed under the Open Government Licence v3.0. Contains Ordnance Survey data © Crown copyright and database right 2025.

v01	02/04/2025		AN	JC	JDM
Issue	Date	Remarks	Drawn	Checked	Approved

Title:

GENERAL ARRANGEMENT PLAN SERIES FOR CONSULTATION - SHEET 2 OF 12

nationalgrid			
Figure number: SHEET 2			
Drawing reference: C01494-EGL384-LOC-011-A			
Scale: 1:150,000	Sheet size: A1	Sheet: SHEET 2 OF 12	Issue: 01



FOR CONTINUATION SEE SHEET 4

FOR CONTINUATION SEE SHEET 2

Legend

Draft Order Limits

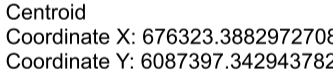
— 12NM Limit

..... Scottish Adjacent Waters

--- EEZ

Notes

This drawing is scaled at paper size A1, therefore any prints taken at smaller sizes will affect accuracy of the measurement units and should not be scaled against.



Base map and data from OpenStreetMap and OpenStreetMap Foundation (CC-BY-SA). © <https://www.openstreetmap.org> and contributors.
UKHO-Contains public sector information licensed under the Open Government Licence v3.0. Contains Ordnance Survey data © Crown copyright and database right 2025.

Title:

GENERAL ARRANGEMENT PLAN SERIES FOR
CONSULTATION - SHEET 3 OF 12

nationalgrid

Figure number: SHEET 3

Drawing reference: C01494-EGL3&4-LOC-012-A

<u>Scale:</u> 1:150,000	<u>Sheet size:</u> A1	<u>Sheet:</u> SHEET 3 OF 12	<u>Issue:</u> 0
----------------------------	--------------------------	--------------------------------	--------------------



Draft Order Limits

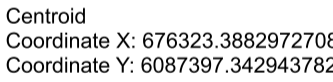
— 12NM Limit

..... Scottish Adjacent Waters

----- EEZ

otes

This drawing is scaled at paper size A1, therefore any prints taken at smaller sizes will not reflect the perfect accuracy of the measurement units and should not be scaled against.



Base map and data from OpenStreetMap and OpenStreetMap Foundation (CC-BY-SA). © <https://www.openstreetmap.org> and contributors.
UKHO-Contains public sector information licensed under the Open Government Licence v3.0. Contains Ordnance Survey data © Crown copyright and database right 2025.

Title:

GENERAL ARRANGEMENT PLAN SERIES FOR
CONSULTATION - SHEET 4 OF 12

nationalgrid

Figure number: SHEET 4

Drawing reference: C01494-EGL3&4-LOC-013-A

<u>Scale:</u> 1:150,000	<u>Sheet size:</u> A1	<u>Sheet:</u> SHEET 4 OF 12	<u>Issue:</u> 0
----------------------------	--------------------------	--------------------------------	--------------------



FOR CONTINUATION SEE SHEET 6

FOR CONTINUATION SEE SHEET 4

Legend

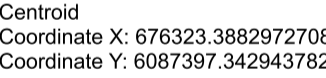
Draft Order Limits

— 12NM Limit

..... Scottish Adjacent Waters

----- EEZ

Notes
This drawing is scaled at paper size A1, therefore any prints taken at smaller sizes will affect accuracy of the measurement units and should not be scaled against.



Base map and data from OpenStreetMap and OpenStreetMap Foundation (CC-BY-SA). ©
<https://www.openstreetmap.org> and contributors.
 UKHO-Contains public sector information licensed under the Open Government Licence
 v3.0. Contains Ordnance Survey data © Crown copyright and database right 2025.

v01	02/04/2025	-	AN	JC	JDM
Issue	Date	Remarks	Drawn	Checked	Approved

Title:

GENERAL ARRANGEMENT PLAN SERIES FOR
CONSULTATION - SHEET 5 OF 12

nationalgrid

Figure number: SHEET 5

Drawing reference: C01494-EGL3&4-LOC-014-A

Scale: 1:150,000	Sheet size: A1	Sheet: SHEET 5 OF 12	Issue: 0
---------------------	-------------------	-------------------------	-------------



Draft Order Limits

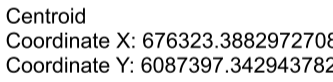
— 12NM Limit

..... Scottish Adjacent Waters

----- EEZ

Notes

This drawing is scaled at paper size A1, therefore any prints taken at smaller sizes will affect accuracy of the measurement units and should not be scaled against.



Base map and data from OpenStreetMap and OpenStreetMap Foundation (CC-BY-SA). © <https://www.openstreetmap.org> and contributors.
UKHO-Contains public sector information licensed under the Open Government Licence v3.0. Contains Ordnance Survey data © Crown copyright and database right 2025.

v01	03/04/2025	-	AN	JC	JDM
Issue	Date	Remarks	Drawn	Checked	Approved

Title:

GENERAL ARRANGEMENT PLAN SERIES FOR
CONSULTATION - SHEET 6 OF 12

nationalgrid

Figure number: SHEET 6

Drawing reference: C01494-EGL3&4-LOC-015-A

<u>Scale:</u> 1:150,000	<u>Sheet size:</u> A1	<u>Sheet:</u> SHEET 6 OF 12	<u>Issue:</u> 0
----------------------------	--------------------------	--------------------------------	--------------------



FOR CONTINUATION SEE SHEET 8

FOR CONTINUATION SEE SHEET 6

Legend

Draft Order Limits

— 12NM Limit

..... Scottish Adjacent Waters

--- EEZ

Notes
This drawing is scaled at paper size A1, therefore any prints taken at smaller sizes will affect accuracy of the measurement units and should not be scaled against.



Base map and data from OpenStreetMap and OpenStreetMap Foundation (CC-BY-SA). © <https://www.openstreetmap.org> and contributors.
UKHO-Contains public sector information licensed under the Open Government Licence v3.0. Contains Ordnance Survey data © Crown copyright and database right 2025.

v01	03/04/2025	-	AN	JC	JDM
Issue	Date	Remarks	Drawn	Checked	Approved

Title:

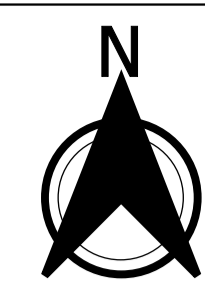
GENERAL ARRANGEMENT PLAN SERIES FOR
CONSULTATION - SHEET 7 OF 12

nationalgrid

Figure number: SHEET 7

Drawing reference: C01494-EGL3&4-LOC-016-A

<u>Scale:</u> 1:150,000	<u>Sheet size:</u> A1	<u>Sheet:</u> SHEET 7 OF 12	<u>Issue:</u> 01
----------------------------	--------------------------	--------------------------------	---------------------

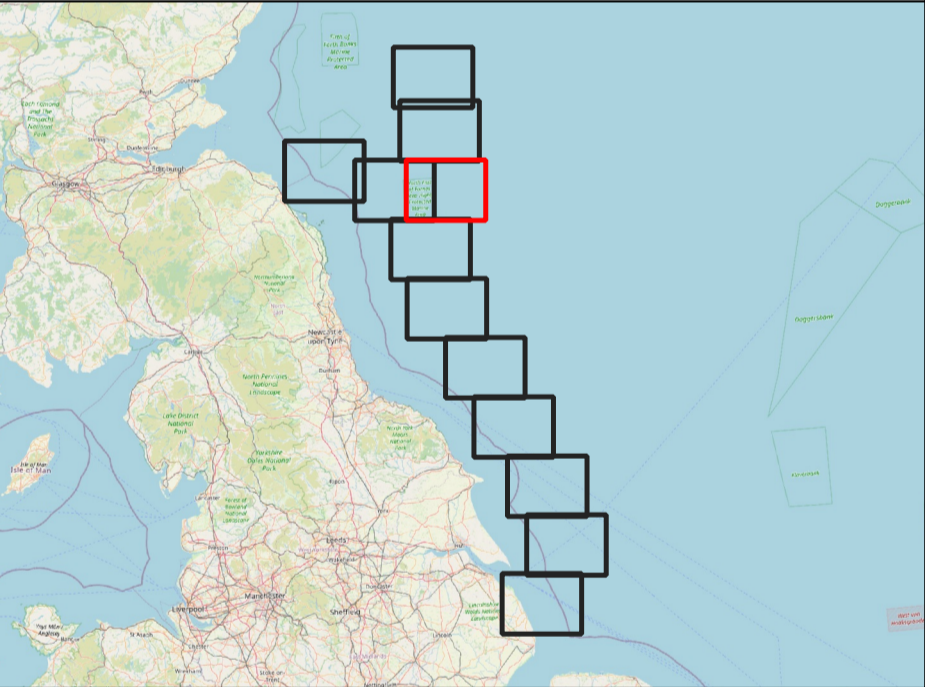


GENERAL ARRANGEMENT PLAN SERIES FOR CONSULTATION - SHEET 8 OF 12

Legend

- Draft Order Limits
- 12NM Limit
- Scottish Adjacent Waters
- EEZ

Notes
This drawing is scaled at paper size A1, therefore any prints taken at smaller sizes will affect accuracy of the measurement units and should not be scaled against.



Centroid
Coordinate X: 676323.3882972708
Coordinate Y: 6087397.342943782



Base map and data from OpenStreetMap and OpenStreetMap Foundation (CC-BY-SA). © <https://www.openstreetmap.org> and contributors.
UKHO-Contains public sector information licensed under the Open Government Licence v3.0. Contains Ordnance Survey data © Crown copyright and database right 2025.

v01	03/04/2025	-	AN	JC	JDM
Issue	Date	Remarks	Drawn	Checked	Approved

Title:

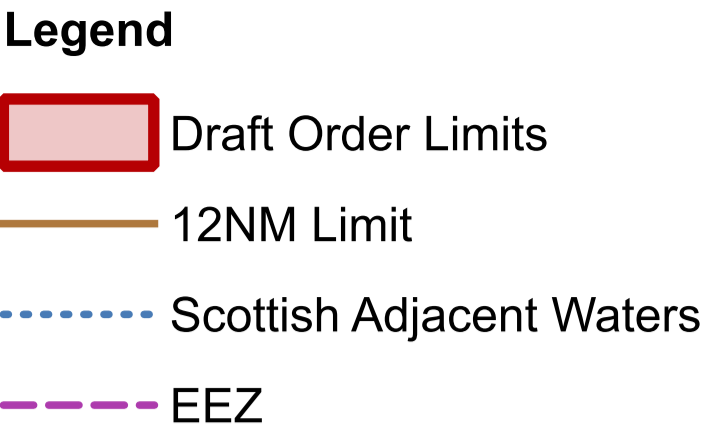
GENERAL ARRANGEMENT PLAN SERIES FOR CONSULTATION - SHEET 8 OF 12

nationalgrid

Figure number: SHEET 8

Drawing reference: C01494-EGL384-LOC-017-A

Scale: 1:150,000	Sheet size: A1	Sheet: SHEET 8 OF 12	Issue: 01
---------------------	-------------------	-------------------------	--------------



This drawing is scaled at paper size A1, therefore any prints taken at smaller sizes will affect accuracy of the measurement units and should not be scaled against.



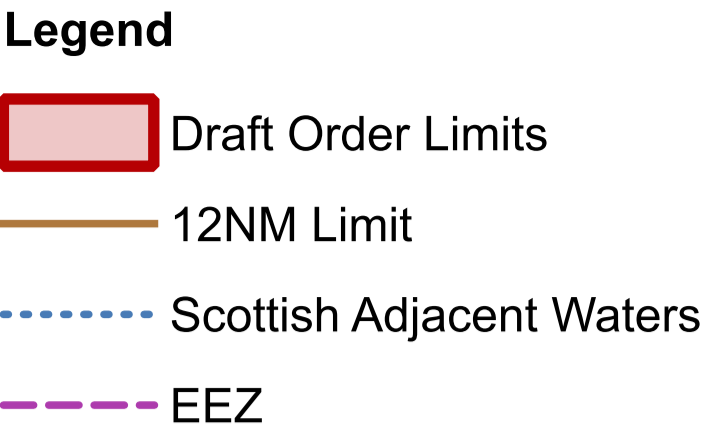
Use map and data from OpenStreetMap and OpenStreetMap Foundation (CC-BY-SA). ©
<https://www.openstreetmap.org> and contributors.
 KHO-Contains public sector information licensed under the Open Government Licence
 v3.0. Contains Ordnance Survey data © Crown copyright and database right 2025.

v01	03/04/2025	-	AN	JC	JDM
Issue	Date	Remarks	Drawn	Checked	Approved

**GENERAL ARRANGEMENT PLAN SERIES FOR
CONSULTATION - SHEET 9 OF 12**

national**grid**

Figure number:				SHEET 9			
Drawing reference:							
C01494-EGL3&4-LOC-018-A							
Scale:		Sheet size:		Sheet:		Issue:	
1:150,000		A1		SHEET 9 OF 12		01	



Notes
This drawing is scaled at paper size A1, therefore any prints taken at smaller sizes will affect accuracy of the measurement units and should not be scaled against.



Base map and data from OpenStreetMap and OpenStreetMap Foundation (CC-BY-SA). ©
<https://www.openstreetmap.org> and contributors.
 UKHO-Contains public sector information licensed under the Open Government Licence
 v3.0. Contains Ordnance Survey data © Crown copyright and database right 2025.

v01	03/04/2025	-	AN	JC	JDM
Issue	Date	Remarks	Drawn	Checked	Approved

Title:

GENERAL ARRANGEMENT PLAN SERIES FOR
CONSULTATION - SHEET 10 OF 12

nationalgrid

Figure number: SHEET 10

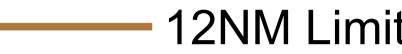
Drawing reference: C01494-EGL3&4-LOC-019-A

<u>Scale:</u> 1:150,000	<u>Sheet size:</u> A1	<u>Sheet:</u> SHEET 10 OF 12	<u>Issue:</u> 01
----------------------------	--------------------------	---------------------------------	---------------------

FOR CONTINUATION SEE SHEET 9



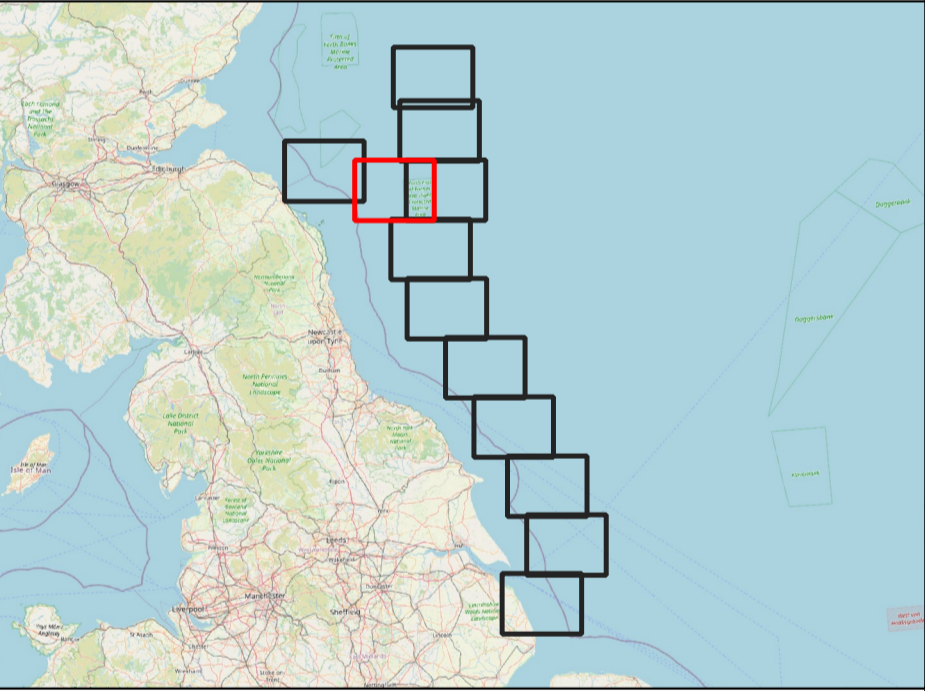
Legend



..... Scottish Adjacent Waters



This drawing is scaled at paper size A1, therefore any prints taken at smaller sizes will not reflect accuracy of the measurement units and should not be scaled against.



Base map and data from OpenStreetMap and OpenStreetMap Foundation (CC-BY-SA). © <https://www.openstreetmap.org> and contributors.
UKHO-Contains public sector information licensed under the Open Government Licence v3.0. Contains Ordnance Survey data © Crown copyright and database right 2025.

v01	03/04/2025	-	AN	JC	JDM
Issue	Date	Remarks	Drawn	Checked	Approved

itle:

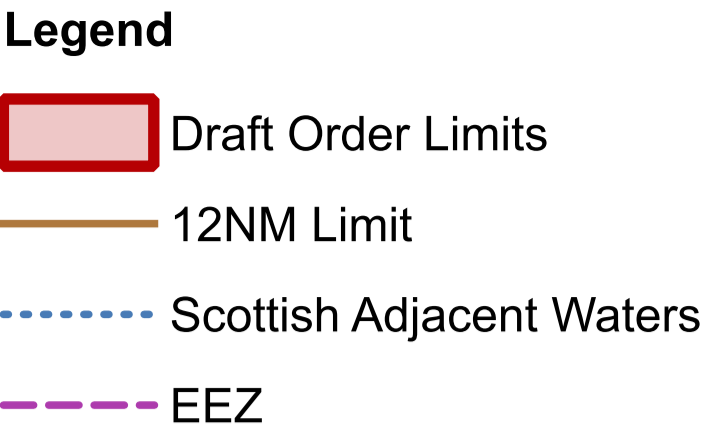
GENERAL ARRANGEMENT PLAN SERIES FOR
CONSULTATION - SHEET 11 OF 12

nationalgrid

Figure number: SHEET 11

Drawing reference: C01494-EGL3&4-LOC-020-A

<u>Scale:</u> 1:150,000	<u>Sheet size:</u> A1	<u>Sheet:</u> SHEET 11 OF 12	<u>Issue:</u> 0
----------------------------	--------------------------	---------------------------------	--------------------



<u>Scale:</u> 1:150,000	<u>Sheet size:</u> A1	<u>Sheet:</u> SHEET 12 OF 12	<u>Issue:</u> 01
----------------------------	--------------------------	---------------------------------	---------------------