

The Great Grid Upgrade

Chesterfield to Willington

nationalgrid

Have your say

The Chesterfield to Willington Stage 1 consultation runs for eight weeks, from 14 May to 9 July 2024.

Provide feedback

Please submit your feedback by 11:59pm on 9 July 2024.

Your feedback will play an important role in helping us to develop and refine our proposals.

How to respond

Your feedback will play an important role in helping us to develop and refine our proposals. You can provide feedback in the following ways:



Complete a feedback form

You can complete the form online at nationalgrid.com/chesterfieldtowillington. Alternatively, paper copies are available to pick up from the local information points and at our events, or we'll deliver to you by post on request (please call or email us). You can also download and print a copy from our website and return it to us.



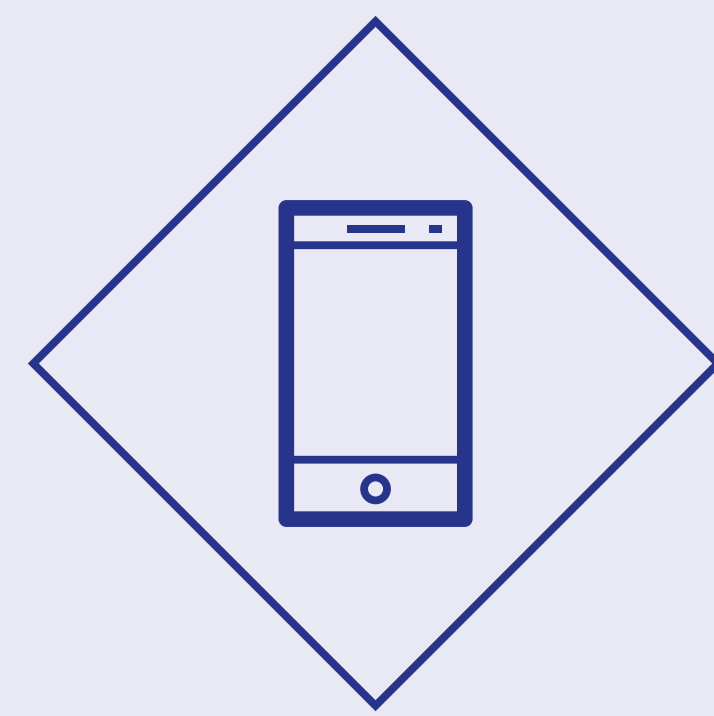
Email us

If you prefer to send us your comments via email, you can send them to us at chesterfield-willington@nationalgrid.com.



Send us a letter

You can send a letter or completed feedback form at no cost to **FREEPOST NATIONAL GRID PROJECTS (JBP)** - no stamp or further address is needed.



Call us

If you require any assistance with providing feedback, please call us on **0800 073 1047**. Lines are open Monday to Friday 9:00am-5:30pm, with an answerphone facility taking messages outside of these hours.

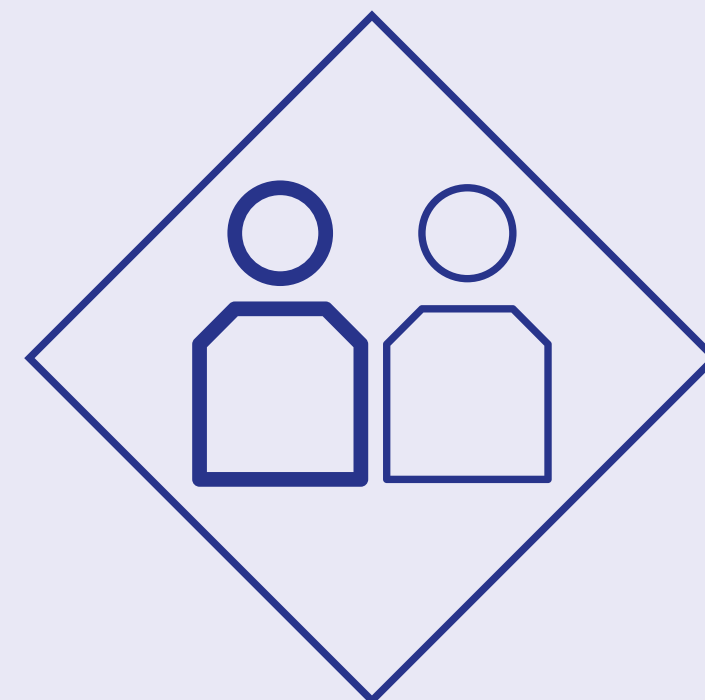
You can learn more about our proposals by:



Viewing all the information and the interactive map on our project website nationalgrid.com/chesterfieldtowillington;



reading our Project Background Document, Strategic Options Report (SOR), Corridor Preliminary Routeing and Siting Study (CPRSS);



attending one of our public information events;



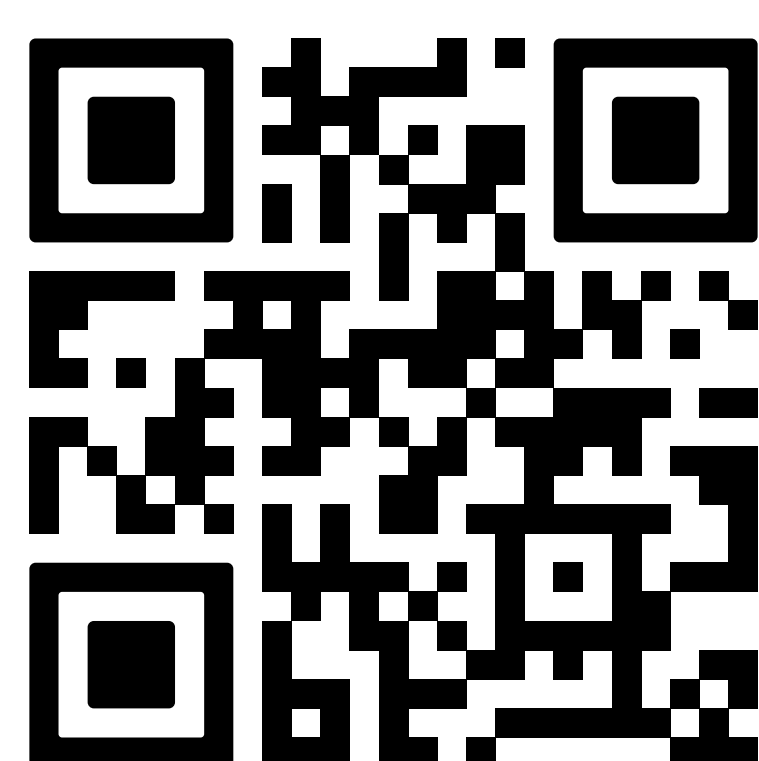
visiting an information point to collect a feedback form and consultation documents;



requesting an 'ask the expert' session from a member of the team - book by calling or emailing us; and



attending one of our online webinars.



chesterfield-willington@nationalgrid.com
0800 073 1047
FREEPOST NATIONAL GRID PROJECTS (JBP)
nationalgrid.com/chesterfieldtowillington

What happens next?

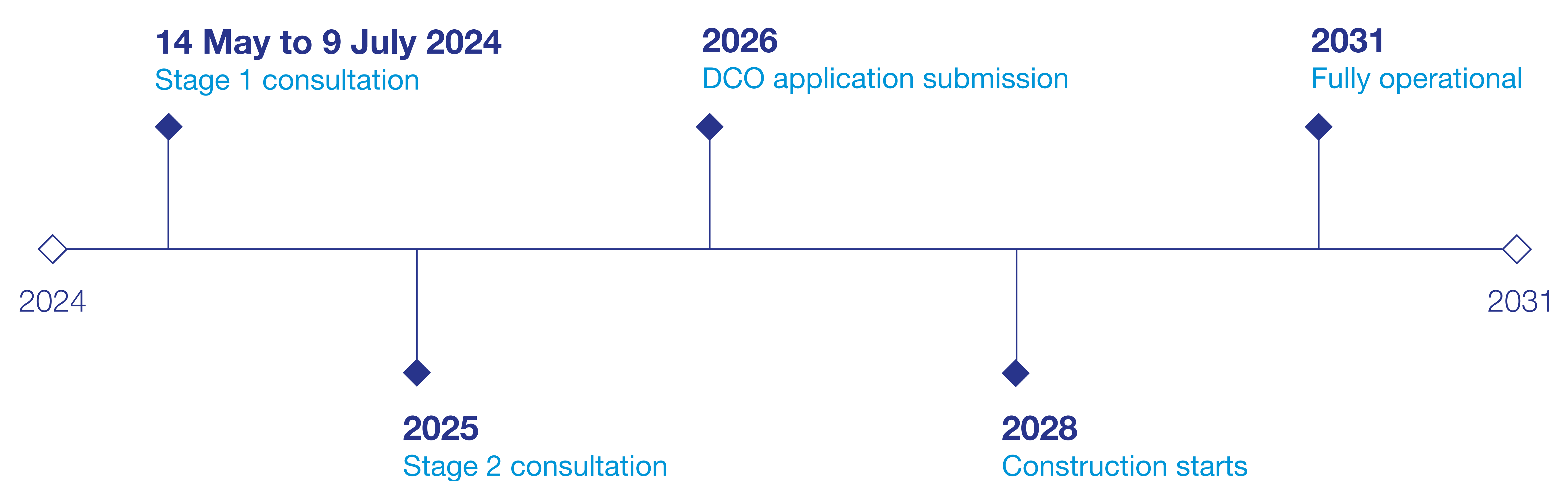
This is our first stage of consultation. The feedback we receive at this first stage of consultation, along with outputs from technical assessments and environmental surveys, will shape the development of our proposals for Chesterfield to Willington.

Following this consultation, we will:

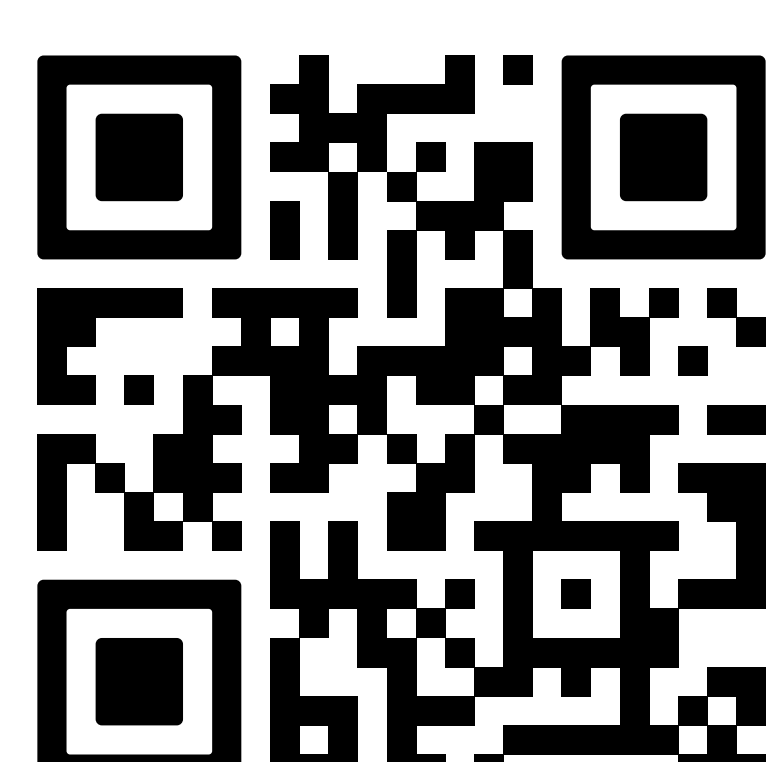
- consider all consultation feedback as we refine our proposals before the next stage;
- continue our discussions with landowners and those with an interest in land which interacts with the project;
- continue to brief local elected representatives;
- work with communities, local authorities and other stakeholders;
- continue environmental impact assessment work and undertake surveys along the proposed route;
- provide continued updates to the local community and those who have asked to be kept updated on our proposals via email; and
- continue to refine our proposals in response to feedback and the outputs from technical studies and environmental surveys.

We will present updated proposals for Chesterfield to Willington during our next stage of consultation which we anticipate will be in 2025. Following analysis of the feedback we will report back on the key themes raised during consultation. We will also publish a summary of the key themes raised during this Stage 1 consultation and explain how feedback has informed the development of our proposals.

Following further development and finalisation of detailed proposals, we will submit our Development Consent Order application to the Planning Inspectorate. A final consenting decision will rest with the Secretary of State for the Department of Energy Security and Net Zero.



These timings are indicative.



chesterfield-willington@nationalgrid.com
0800 073 1047
FREEPOST NATIONAL GRID PROJECTS (JBP)
nationalgrid.com/chesterfieldtowillington