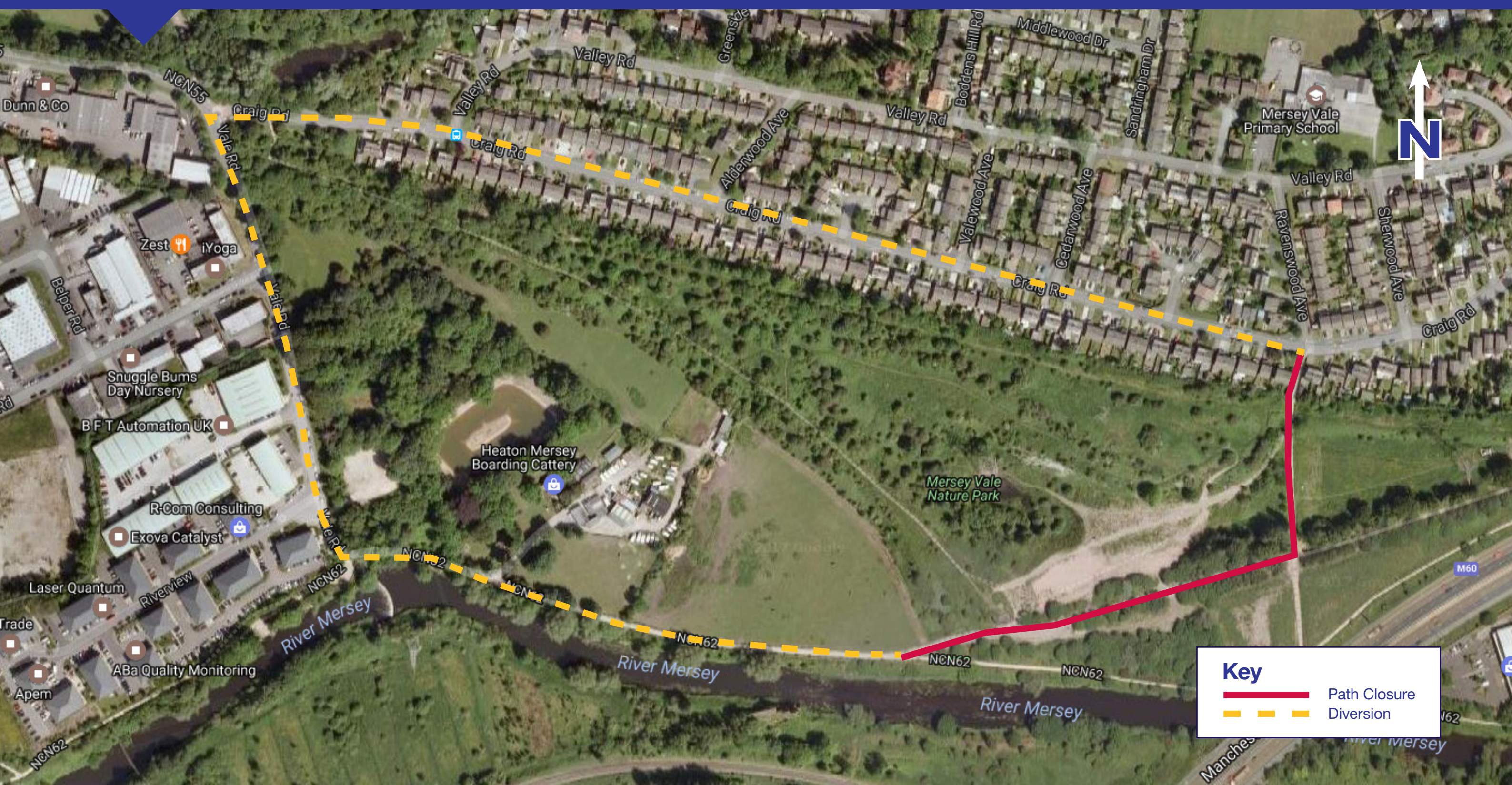


Bredbury to South Manchester line improvements

nationalgrid

Refurbishment of electricity pylons in Mersey Vale Nature Park



FOOTPATH CLOSURE

This footpath will be closed from:

1st June - 31st July

This footpath will be temporarily closed to allow refurbishment of the overhead line between Bredbury Substation and South Manchester substation in Sale.

Your electricity supply won't be affected while this work is underway.

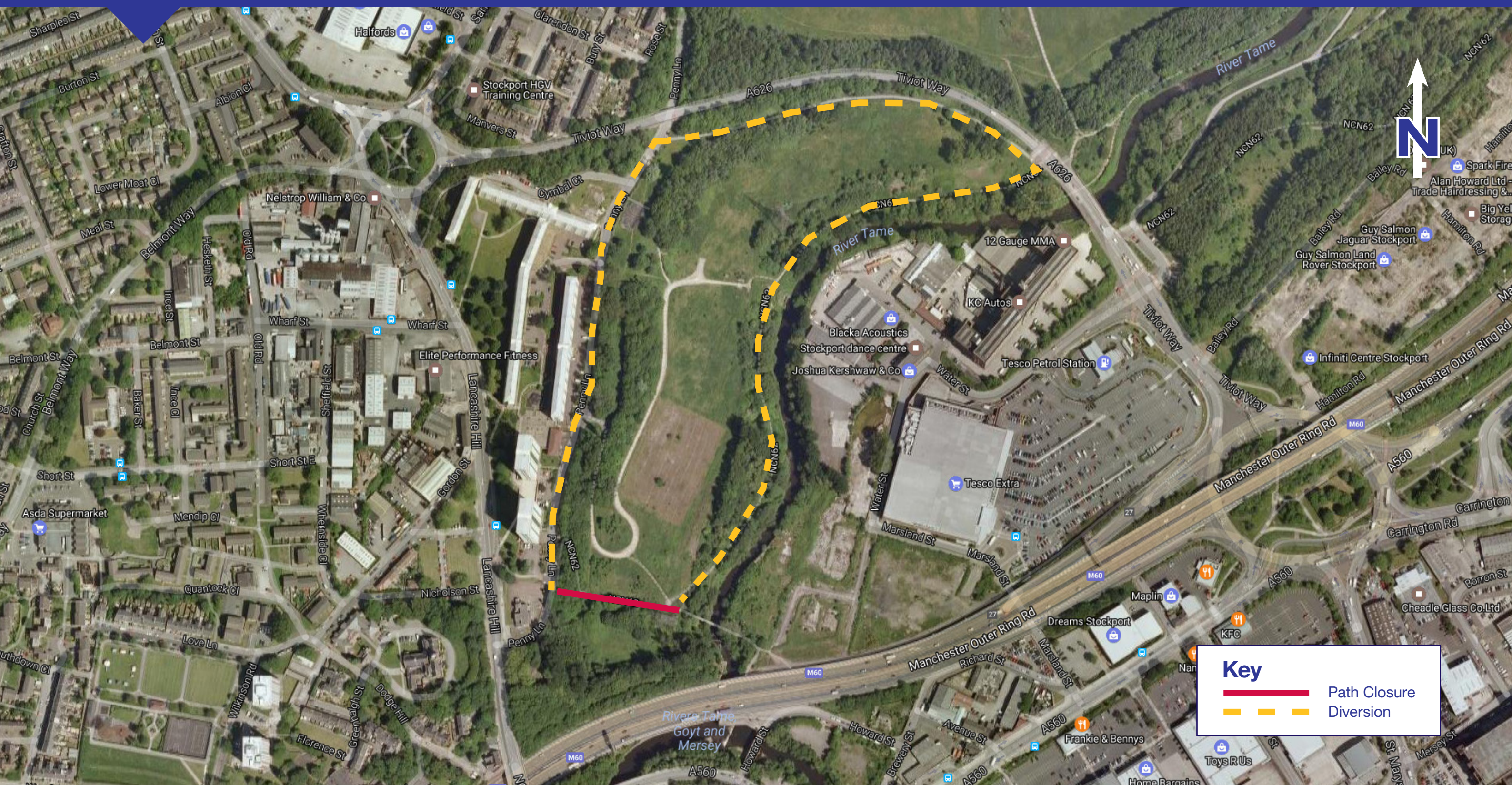
Keeping in touch

For the latest project information, visit www2.nationalgrid.com/bredbury. If you have any questions, please contact our community relations team on 0800 073 1047. The helpline is available between **7am – 7pm Monday to Sunday**.

Bredbury to South Manchester line improvements

nationalgrid

Refurbishment of electricity pylons in Reddish Vale Country Park



FOOTPATH CLOSURE

This footpath will be closed from:

1st June - 31st July

This footpath will be temporarily closed to allow refurbishment of the overhead line between Bredbury Substation and South Manchester substation in Sale.

Your electricity supply won't be affected while this work is underway.

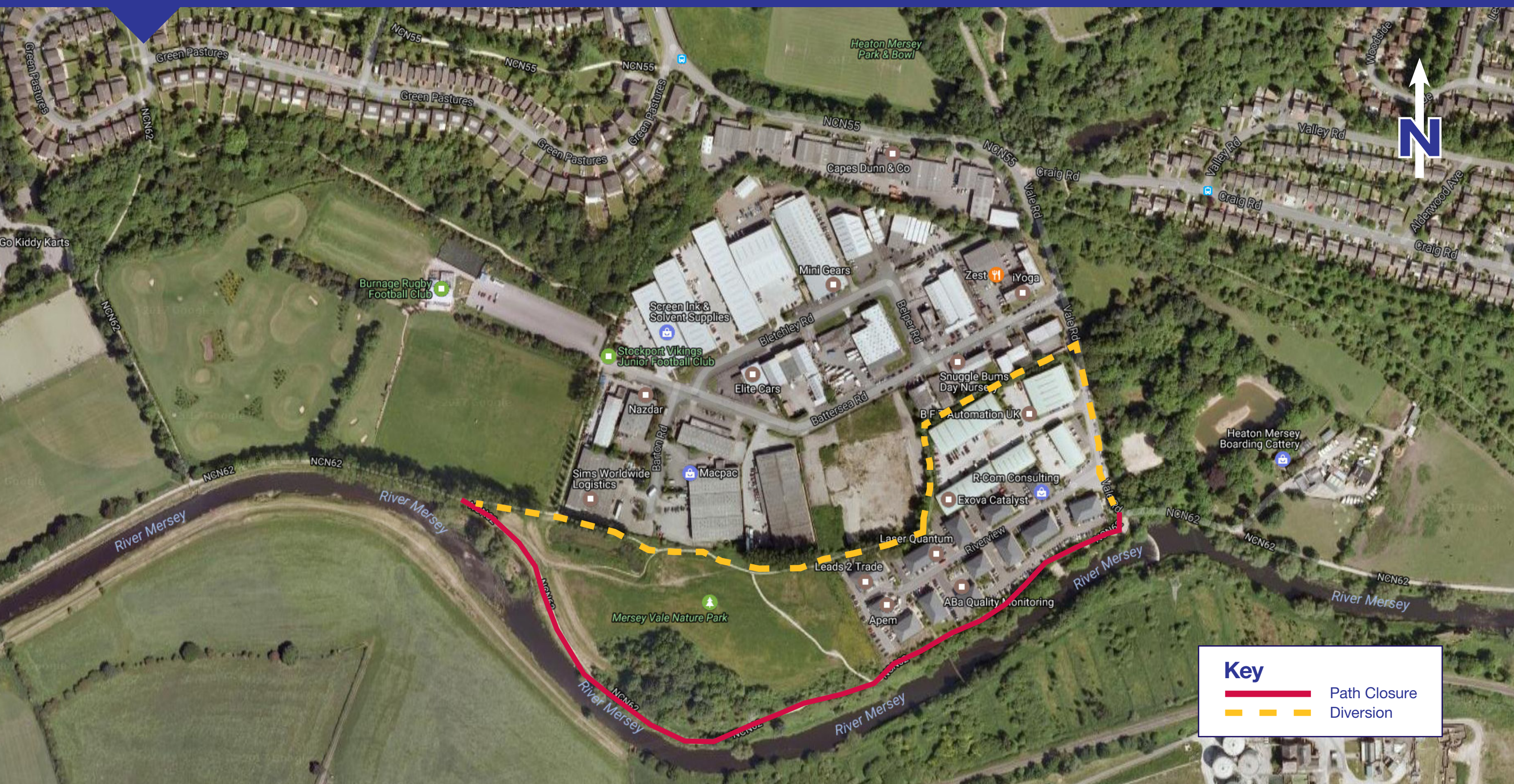
Keeping in touch

For the latest project information, visit www2.nationalgrid.com/bredbury. If you have any questions, please contact our community relations team on 0800 073 1047. The helpline is available between **7am – 7pm Monday to Sunday**.

Bredbury to South Manchester line improvements

nationalgrid

Refurbishment of electricity pylons in Mersey Vale Nature Park



FOOTPATH CLOSURE

This footpath will be closed from:

1st June - 31st July

This footpath will be temporarily closed to allow refurbishment of the overhead line between Bredbury Substation and South Manchester substation in Sale.

Your electricity supply won't be affected while this work is underway.

Keeping in touch

For the latest project information, visit www2.nationalgrid.com/bredbury. If you have any questions, please contact our community relations team on 0800 073 1047. The helpline is available between **7am – 7pm Monday to Sunday**.

Refurbishment of electricity pylons in Brinnington Park



FOOTPATH CLOSURE

This footpath will be closed from:
1st June - 31st July

This footpath will be temporarily closed to allow refurbishment of the overhead line between Bredbury Substation and South Manchester substation in Sale.

Your electricity supply won't be affected while this work is underway.

Keeping in touch

For the latest project information, visit www2.nationalgrid.com/bredbury. If you have any questions, please contact our community relations team on 0800 073 1047. The helpline is available between **7am – 7pm Monday to Sunday**.

Bredbury to South Manchester line improvements

nationalgrid

Refurbishment of electricity pylons in Millgate Fields



FOOTPATH CLOSURE

This footpath will be closed from:

1st June - 31st July

This footpath will be temporarily closed to allow refurbishment of the overhead line between Bredbury Substation and South Manchester substation in Sale.

Your electricity supply won't be affected while this work is underway.

Keeping in touch

For the latest project information, visit www2.nationalgrid.com/bredbury. If you have any questions, please contact our community relations team on 0800 073 1047. The helpline is available between **7am – 7pm Monday to Sunday**.

Bredbury to South Manchester
line improvements

nationalgrid

Refurbishment of electricity pylons in Kenworthy Wood



FOOTPATH CLOSURE

This footpath will be closed from:
1st June - 31st July

This footpath will be temporarily closed to allow refurbishment of the overhead line between Bredbury Substation and South Manchester substation in Sale.

Your electricity supply won't be affected while this work is underway.

Keeping in touch

For the latest project information, visit www2.nationalgrid.com/bredbury. If you have any questions, please contact our community relations team on 0800 073 1047. The helpline is available between **7am – 7pm Monday to Sunday**.