

Map 7. Marine Environmental Information

Supplementary Non Statutory Public Consultation
08 September – 03 November 2023

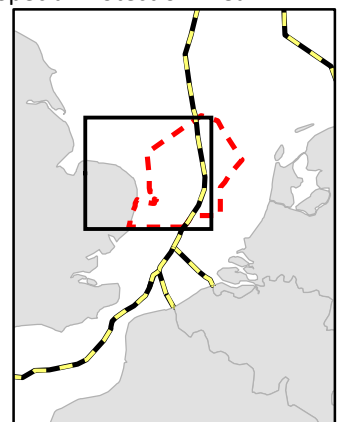
Drawing No: P2535-ENV-001

F

Legend

- EEZ Boundary
- EuroLink Landfall Location Options
- Offshore Study Area
- Marine Aggregate Extraction**
- Marine Aggregate Extraction
- Infrastructure**
- Planned & Active Windfarm/Cable Corridors
- SeaLink Cable Corridor
- Shipping and Navigation**
- Anchorage Area
- Traffic Separation Scheme
- Deep Water Route
- Traffic Separation Area
- Dumping Ground
- Dunwich Settlement Approximate Boundary
- Sizewell Tidally Restricted Shallow Water Area
- Environmental Designation**
- Southern North Sea Special Area of Conservation
- Outer Thames Estuary Special Protection Area
- Designation Area
- Coralline Crag Area

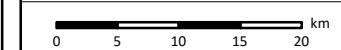
Note: The marine constraints shown are not exhaustive



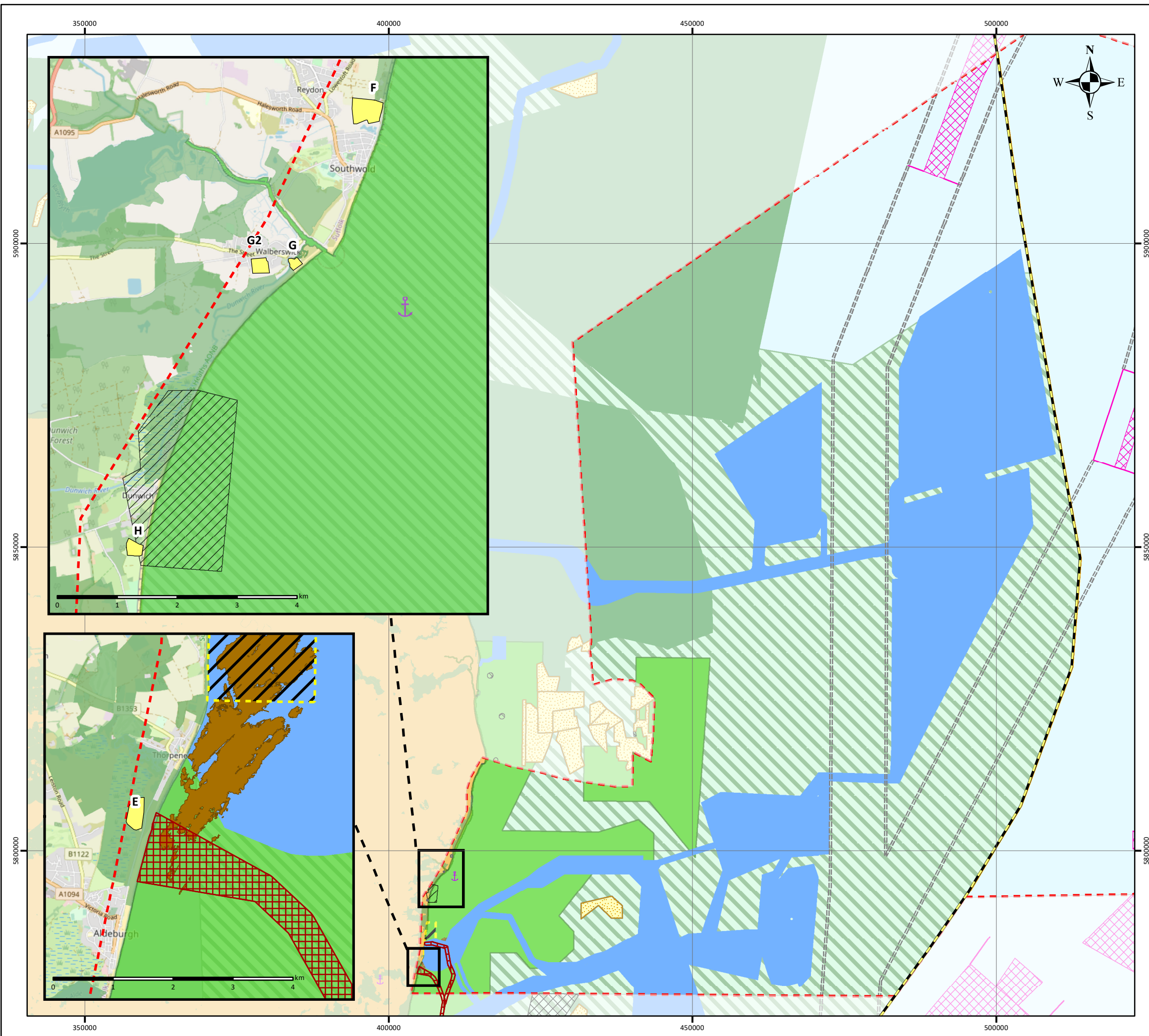
NOTE: Not to be used for Navigation

Date	14 September 2023
Coordinate System	WGS 1984 UTM Zone 31N
Projection	Transverse Mercator
Datum	WGS 1984
Data Source	ESRI; OSOD; KISCA; TCE: OGA; EUROPA; INCC: NE
File Reference	J:\P2535\Mxd_QGZ\03_ENV\ P2535-ENV-001.mxd
Created By	
Reviewed By	
Approved By	

nationalgrid **intertek**



© Metoc Ltd, 2023
All rights reserved.



Contains data from UKOGD; ©Esri; © Crown copyright 2013; Service Layer Credits: © OpenStreetMap (and) contributors, CC-BY-SA; © Natural England copyright. Contains Ordnance Survey data © Crown copyright and database right [2019]. © British Crown and OceanWise, 2022. All rights reserved. License No. "M55&". Not to be used for Navigation; Copyright © KIS-ORCA; Contains data provided by The Crown Estate that is protected by copyright and database rights.