



EXISTING BASELINE VIEW					
VIEWPOINT INFORMATION : VIEWPOINT 01-01 - View from Sharpill Lane, near junction of Redhouse Lane and Main Road					
CAMERA MAKE AND MODEL:	Canon EOS 6D MkII	DATE AND TIME:	03/04/2022 @ 08:39	DIRECTION OF VIEW:	North West
LENS AND FOCAL LENGTH:	Canon EF 50mm f/1.4 USM	EASTING & NORTHING:	467880, 427415	DISTANCE FROM AGI LOCATION:	822m (Option A)
SURVEY EQUIPMENT / ACCURACY:	Leica Zeno 20 RTK with Disto S910 / 2cm	VIEWPOINT HEIGHT (AOD):	4.6m	PROJECTION:	Cylindrical
LI TGN-06/19 VISUALISATION TYPE:	Type 1	HEIGHT OF CAMERA (AGL):	1.6m	HORIZONTAL FIELD OF VIEW	90°



EXISTING BASELINE VIEW					
VIEWPOINT INFORMATION : VIEWPOINT 01-02 - View from PRoW and in close proximity to Scheduled Monument					
CAMERA MAKE AND MODEL:	Canon EOS 6D MkII	DATE AND TIME:	03/04/2022 @ 09:09	DIRECTION OF VIEW:	South East
LENS AND FOCAL LENGTH:	Canon EF 50mm f/1.4 USM	EASTING & NORTHING:	466879, 428086	DISTANCE FROM AGI LOCATION:	103m (Option B)
SURVEY EQUIPMENT / ACCURACY:	Leica Zeno 20 RTK with Disto S910 / 2cm	VIEWPOINT HEIGHT (AOD):	3.7m	PROJECTION:	Cylindrical
LI TGN-06/19 VISUALISATION TYPE:	Type 1	HEIGHT OF CAMERA (AGL):	1.6m	HORIZONTAL FIELD OF VIEW	90°

FIGURE 11.4
HUMBER PHOTOVIEWS



EXISTING BASELINE VIEW					
VIEWPOINT INFORMATION : VIEWPOINT 01-03 - View from Prow adjacent to River Ouse					
CAMERA MAKE AND MODEL:	Canon EOS 6D MkII	DATE AND TIME:	03/04/2022 @ 08:23	DIRECTION OF VIEW:	South West
LENS AND FOCAL LENGTH:	Canon EF 50mm f/1.4 USM	EASTING & NORTHING:	467921, 428523	DISTANCE FROM AGI LOCATION:	899m (Option A)
SURVEY EQUIPMENT / ACCURACY:	Leica Zeno 20 RTK with Disto S910 / 2cm	VIEWPOINT HEIGHT (AOD):	3.6m	PROJECTION:	Cylindrical
LI TGN-06/19 VISUALISATION TYPE:	Type 1	HEIGHT OF CAMERA (AGL):	1.6m	HORIZONTAL FIELD OF VIEW	90°



EXISTING BASELINE VIEW					
VIEWPOINT INFORMATION : VIEWPOINT 02-02 - View from junction of Reading Gate and Crossmoor Bank close to Listed Buildings at Moorend Farm					
CAMERA MAKE AND MODEL:	Canon EOS 6D MkII	DATE AND TIME:	03/04/2022 @ 10:08	DIRECTION OF VIEW:	South East
LENS AND FOCAL LENGTH:	Canon EF 50mm f/1.4 USM	EASTING & NORTHING:	477379, 418448	DISTANCE FROM AGI LOCATION:	725m
SURVEY EQUIPMENT / ACCURACY:	Leica Zeno 20 RTK with Disto S910 / 2cm	VIEWPOINT HEIGHT (AOD):	2.3m	PROJECTION:	Cylindrical
LI TGN-06/19 VISUALISATION TYPE:	Type 1	HEIGHT OF CAMERA (AGL):	1.6m	HORIZONTAL FIELD OF VIEW	90°

FIGURE 11.4
HUMBER PHOTOVIEWS

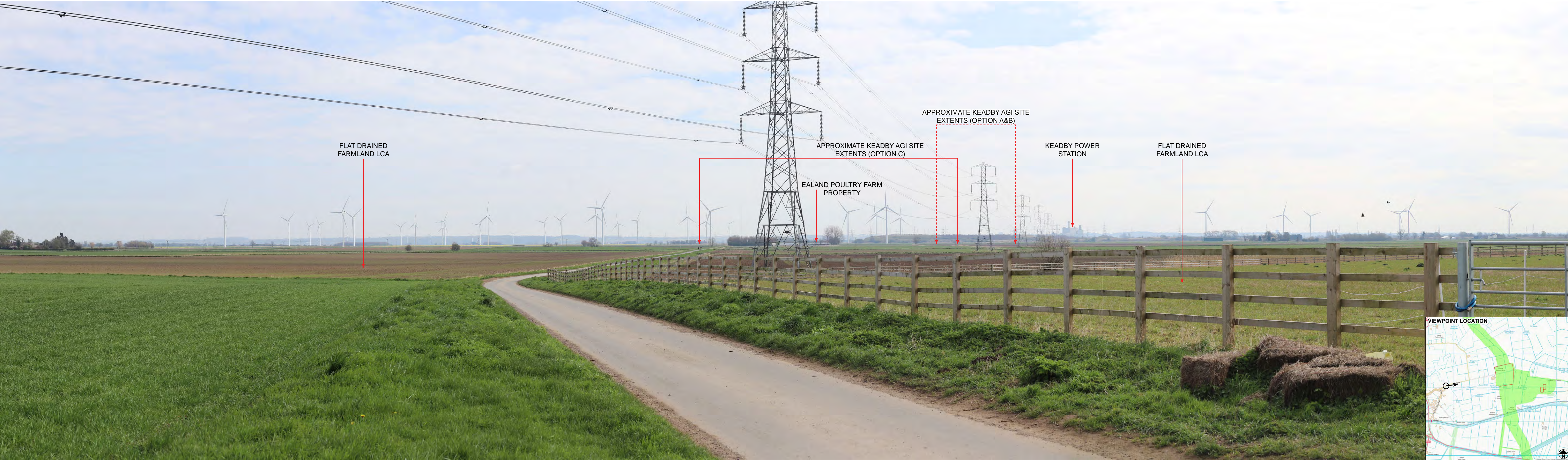


EXISTING BASELINE VIEW					
VIEWPOINT INFORMATION : VIEWPOINT 02-03 - View from Oldlane Gate					
CAMERA MAKE AND MODEL:	Canon EOS 6D MkII	DATE AND TIME:	03/04/2022 @ 10:39	DIRECTION OF VIEW:	North East
LENS AND FOCAL LENGTH:	Canon EF 50mm f/1.4 USM	EASTING & NORTHING:	477473, 416790	DISTANCE FROM AGI LOCATION:	1144m
SURVEY EQUIPMENT / ACCURACY:	Leica Zeno 20 RTK with Disto S910 / 2cm	VIEWPOINT HEIGHT (AOD):	2.0m	PROJECTION:	Cylindrical
LI TGN-06/19 VISUALISATION TYPE:	Type 1	HEIGHT OF CAMERA (AGL):	1.6m	HORIZONTAL FIELD OF VIEW	90°



EXISTING BASELINE VIEW					
VIEWPOINT INFORMATION : VIEWPOINT 03-03 - View adjacent to Stainforth and Keady Canal					
CAMERA MAKE AND MODEL:	Canon EOS 6D MkII	DATE AND TIME:	03/04/2022 @ 11:38	DIRECTION OF VIEW:	North
LENS AND FOCAL LENGTH:	Canon EF 50mm f/1.4 USM	EASTING & NORTHING:	480564, 411256	DISTANCE FROM AGI LOCATION:	795m (Option C)
SURVEY EQUIPMENT / ACCURACY:	Leica Zeno 20 RTK with Disto S910 / 2cm	VIEWPOINT HEIGHT (AOD):	2.6m	PROJECTION:	Cylindrical
LI TGN-06/19 VISUALISATION TYPE:	Type 1	HEIGHT OF CAMERA (AGL):	1.6m	HORIZONTAL FIELD OF VIEW	90°

FIGURE 11.4
HUMBER PHOTOVIEWS



EXISTING BASELINE VIEW					
VIEWPOINT INFORMATION : VIEWPOINT 03-05 - View from Peatlands Way National Trail					
CAMERA MAKE AND MODEL:	Canon EOS 6D MkII	DATE AND TIME:	03/04/2022 @ 11:15	DIRECTION OF VIEW:	East
LENS AND FOCAL LENGTH:	Canon EF 50mm f/1.4 USM	EASTING & NORTHING:	478771, 412031	DISTANCE FROM AGI LOCATION:	1461m (Option C)
SURVEY EQUIPMENT / ACCURACY:	Leica Zeno 20 RTK with Disto S910 / 2cm	VIEWPOINT HEIGHT (AOD):	5.9m	PROJECTION:	Cylindrical
LI TGN-06/19 VISUALISATION TYPE:	Type 1	HEIGHT OF CAMERA (AGL):	1.6m	HORIZONTAL FIELD OF VIEW	90°



EXISTING BASELINE VIEW					
VIEWPOINT INFORMATION : VIEWPOINT 04-01 - View from access track to Raventhorpe Farm off A18					
CAMERA MAKE AND MODEL:	Canon EOS 6D MkII	DATE AND TIME:	03/04/2022 @ 12:53	DIRECTION OF VIEW:	North
LENS AND FOCAL LENGTH:	Canon EF 50mm f/1.4 USM	EASTING & NORTHING:	493751, 407577	DISTANCE FROM AGI LOCATION:	957m (Option B)
SURVEY EQUIPMENT / ACCURACY:	Leica Zeno 20 RTK with Disto S910 / 2cm	VIEWPOINT HEIGHT (AOD):	45.5m	PROJECTION:	Cylindrical
LI TGN-06/19 VISUALISATION TYPE:	Type 1	HEIGHT OF CAMERA (AGL):	1.6m	HORIZONTAL FIELD OF VIEW	90°

FIGURE 11.4
HUMBER PHOTOVIEWS



EXISTING BASELINE VIEW

VIEWPOINT INFORMATION : VIEWPOINT 04-03 - View from PRoW near Raventhorpe Farm					
CAMERA MAKE AND MODEL:	Canon EOS 6D MkII	DATE AND TIME:	03/04/2022 @ 13:06	DIRECTION OF VIEW:	North
LENS AND FOCAL LENGTH:	Canon EF 50mm f/1.4 USM	EASTING & NORTHING:	493717, 408300	DISTANCE FROM AGI LOCATION:	239m (Option B)
SURVEY EQUIPMENT / ACCURACY:	Leica Zeno 20 RTK with Disto S910 / 2cm	VIEWPOINT HEIGHT (AOD):	44.2m	PROJECTION:	Cylindrical
LI TGN-06/19 VISUALISATION TYPE:	Type 1	HEIGHT OF CAMERA (AGL):	1.6m	HORIZONTAL FIELD OF VIEW	90°



EXISTING BASELINE VIEW

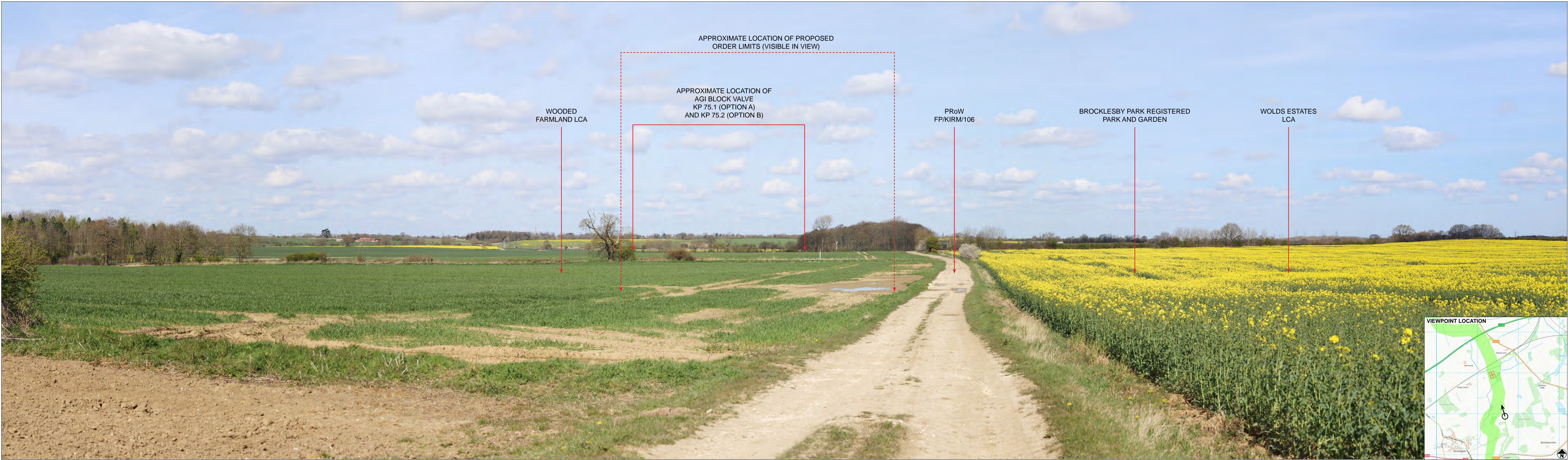
VIEWPOINT INFORMATION : VIEWPOINT 05-01 - View near PRoW along River Ancholme					
CAMERA MAKE AND MODEL:	Canon EOS 6D MkII	DATE AND TIME:	01/04/2022 @ 12:51	DIRECTION OF VIEW:	North-westerly
LENS AND FOCAL LENGTH:	Canon EF 50mm f/1.4 USM	EASTING & NORTHING:	499456, 405648	DISTANCE FROM AGI LOCATION:	758m (Option A)
SURVEY EQUIPMENT / ACCURACY:	Leica Zeno 20 RTK with Disto S910 / 2cm	VIEWPOINT HEIGHT (AOD):	3.5m	PROJECTION:	Cylindrical
LI TGN-06/19 VISUALISATION TYPE:	Type 1	HEIGHT OF CAMERA (AGL):	1.6m	HORIZONTAL FIELD OF VIEW	90°

FIGURE 11.4
HUMBER PHOTOVIEWS



EXISTING BASELINE VIEW

VIEWPOINT INFORMATION : VIEWPOINT 05-04 - View from Scawby Road					
CAMERA MAKE AND MODEL:	Canon EOS 6D MkII	DATE AND TIME:	01/04/2022 @ 13:56	DIRECTION OF VIEW:	East
LENS AND FOCAL LENGTH:	Canon EF 50mm f/1.4 USM	EASTING & NORTHING:	498075, 405907	DISTANCE FROM AGI LOCATION:	535m (Option B)
SURVEY EQUIPMENT / ACCURACY:	Leica Zeno 20 RTK with Disto S910 / 2cm	VIEWPOINT HEIGHT (AOD):	9.9m	PROJECTION:	Cylindrical
LI TGN-06/19 VISUALISATION TYPE:	Type 1	HEIGHT OF CAMERA (AGL):	1.6m	HORIZONTAL FIELD OF VIEW	90°



EXISTING BASELINE VIEW

VIEWPOINT INFORMATION : VIEWPOINT 06-01 - View from edge of Brocklesby Park Registered Park and Garden					
CAMERA MAKE AND MODEL:	Canon EOS 6D MkII	DATE AND TIME:	10/04/2022 @ 12:39	DIRECTION OF VIEW:	North
LENS AND FOCAL LENGTH:	Canon EF 50mm f/1.4 USM	EASTING & NORTHING:	511670, 411944	DISTANCE FROM AGI LOCATION:	937m (Option A)
SURVEY EQUIPMENT / ACCURACY:	Leica Zeno 20 RTK with Disto S910 / 2cm	VIEWPOINT HEIGHT (AOD):	18.8m	PROJECTION:	Cylindrical
LI TGN-06/19 VISUALISATION TYPE:	Type 1	HEIGHT OF CAMERA (AGL):	1.6m	HORIZONTAL FIELD OF VIEW	90°

FIGURE 11.4
HUMBER PHOTOVIEWS



EXISTING BASELINE VIEW

VIEWPOINT INFORMATION : VIEWPOINT 06-05 - View from PRoW FP/ULCE/106					
CAMERA MAKE AND MODEL:	Canon EOS 6D MkII	DATE AND TIME:	03/04/2022 @ 14:37	DIRECTION OF VIEW:	East
LENS AND FOCAL LENGTH:	Canon EF 50mm f/1.4 USM	EASTING & NORTHING:	511164, 412876	DISTANCE FROM AGI LOCATION:	152m (Option B)
SURVEY EQUIPMENT / ACCURACY:	Leica Zeno 20 RTK with Disto S910 / 2cm	VIEWPOINT HEIGHT (AOD):	14.6m	PROJECTION:	Cylindrical
LI TGN-06/19 VISUALISATION TYPE:	Type 1	HEIGHT OF CAMERA (AGL):	1.6m	HORIZONTAL FIELD OF VIEW	90°



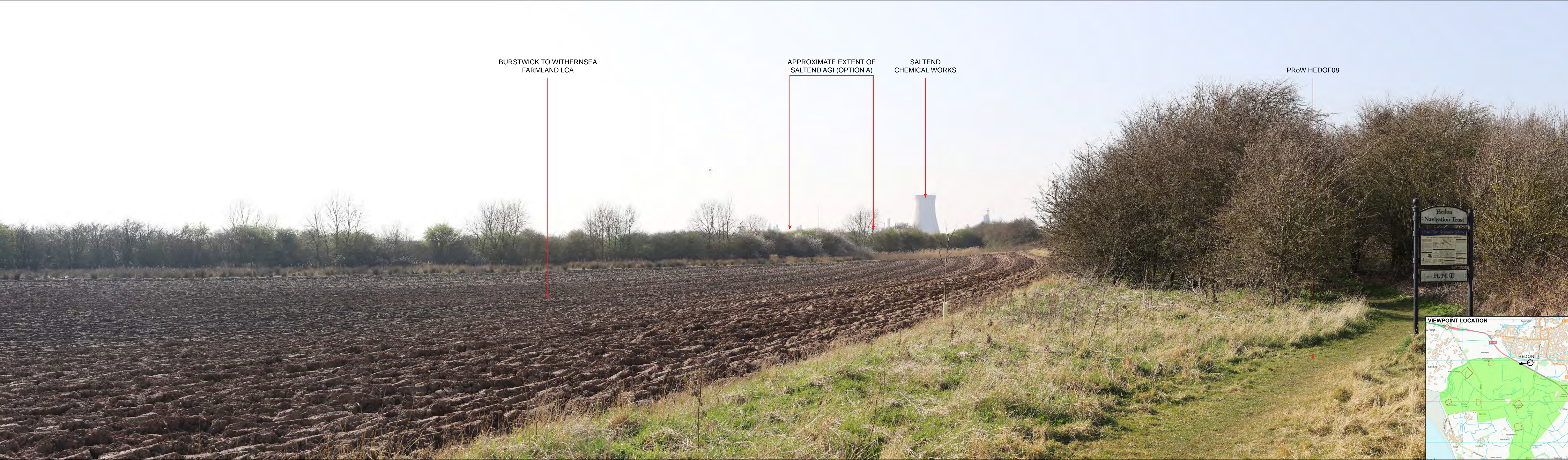
EXISTING BASELINE VIEW

VIEWPOINT INFORMATION : VIEWPOINT 07-01 - View from PRoW FP/EHAL/74					
CAMERA MAKE AND MODEL:	Canon EOS 6D MkII	DATE AND TIME:	01/04/2022 @ 10:22	DIRECTION OF VIEW:	South East
LENS AND FOCAL LENGTH:	Canon EF 50mm f/1.4 USM	EASTING & NORTHING:	514789, 420456	DISTANCE FROM AGI LOCATION:	849m
SURVEY EQUIPMENT / ACCURACY:	Leica Zeno 20 RTK with Disto S910 / 2cm	VIEWPOINT HEIGHT (AOD):	9.4m	PROJECTION:	Cylindrical
LI TGN-06/19 VISUALISATION TYPE:	Type 1	HEIGHT OF CAMERA (AGL):	1.6m	HORIZONTAL FIELD OF VIEW	90°

FIGURE 11.4
HUMBER PHOTOVIEWS



EXISTING BASELINE VIEW					
VIEWPOINT INFORMATION : VIEWPOINT 07-04 - View from PRoW FP/NKIL/86					
CAMERA MAKE AND MODEL:	Canon EOS 6D MkII	DATE AND TIME:	01/04/2022 @ 09:39	DIRECTION OF VIEW:	North East
LENS AND FOCAL LENGTH:	Canon EF 50mm f/1.4 USM	EASTING & NORTHING:	514652, 418862	DISTANCE FROM AGI LOCATION:	912m
SURVEY EQUIPMENT / ACCURACY:	Leica Zeno 20 RTK with Disto S910 / 2cm	VIEWPOINT HEIGHT (AOD):	11.5m	PROJECTION:	Cylindrical
LI TGN-06/19 VISUALISATION TYPE:	Type 1	HEIGHT OF CAMERA (AGL):	1.6m	HORIZONTAL FIELD OF VIEW	90°



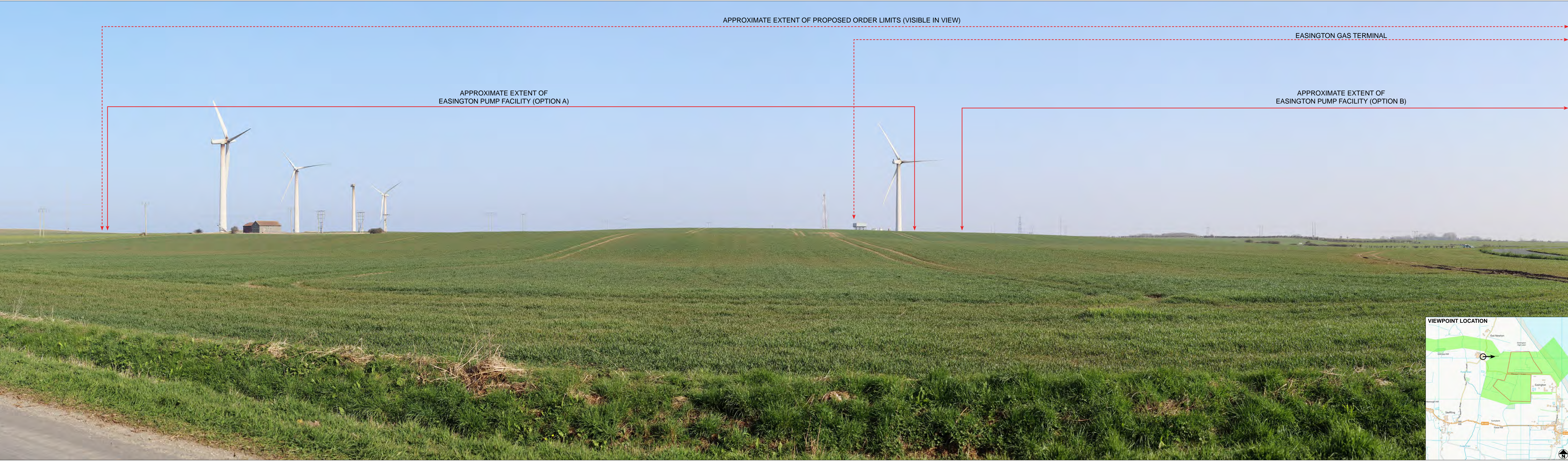
EXISTING BASELINE VIEW					
VIEWPOINT INFORMATION : VIEWPOINT 08-04 - View from edge of Hedon and close to settlement and PRoWs					
CAMERA MAKE AND MODEL:	Canon EOS 6D MkII	DATE AND TIME:	24/03/2022 @ 14:20	DIRECTION OF VIEW:	West
LENS AND FOCAL LENGTH:	Canon EF 50mm f/1.4 USM	EASTING & NORTHING:	518635, 427945	DISTANCE FROM AGI LOCATION:	872m (Option C)
SURVEY EQUIPMENT / ACCURACY:	Leica Zeno 20 RTK with Disto S910 / 2cm	VIEWPOINT HEIGHT (AOD):	4.9m	PROJECTION:	Cylindrical
LI TGN-06/19 VISUALISATION TYPE:	Type 1	HEIGHT OF CAMERA (AGL):	1.6m	HORIZONTAL FIELD OF VIEW	90°

FIGURE 11.4
HUMBER PHOTOVIEWS



EXISTING BASELINE VIEW					
VIEWPOINT INFORMATION : VIEWPOINT 09-02 - View from Hull Road on outskirts of Easington					
CAMERA MAKE AND MODEL:	Canon EOS 6D MkII	DATE AND TIME:	24/03/2022 @ 10:54	DIRECTION OF VIEW:	North
LENS AND FOCAL LENGTH:	Canon EF 50mm f/1.4 USM	EASTING & NORTHING:	539186, 419353	DISTANCE FROM AGI LOCATION:	588m (Option B)
SURVEY EQUIPMENT / ACCURACY:	Leica Zeno 20 RTK with Disto S910 / 2cm	VIEWPOINT HEIGHT (AOD):	11.8m	PROJECTION:	Cylindrical
LI TGN-06/19 VISUALISATION TYPE:	Type 1	HEIGHT OF CAMERA (AGL):	1.6m	HORIZONTAL FIELD OF VIEW	90°

FIGURE 11.4
HUMBER PHOTOVIEWS



EXISTING BASELINE VIEW

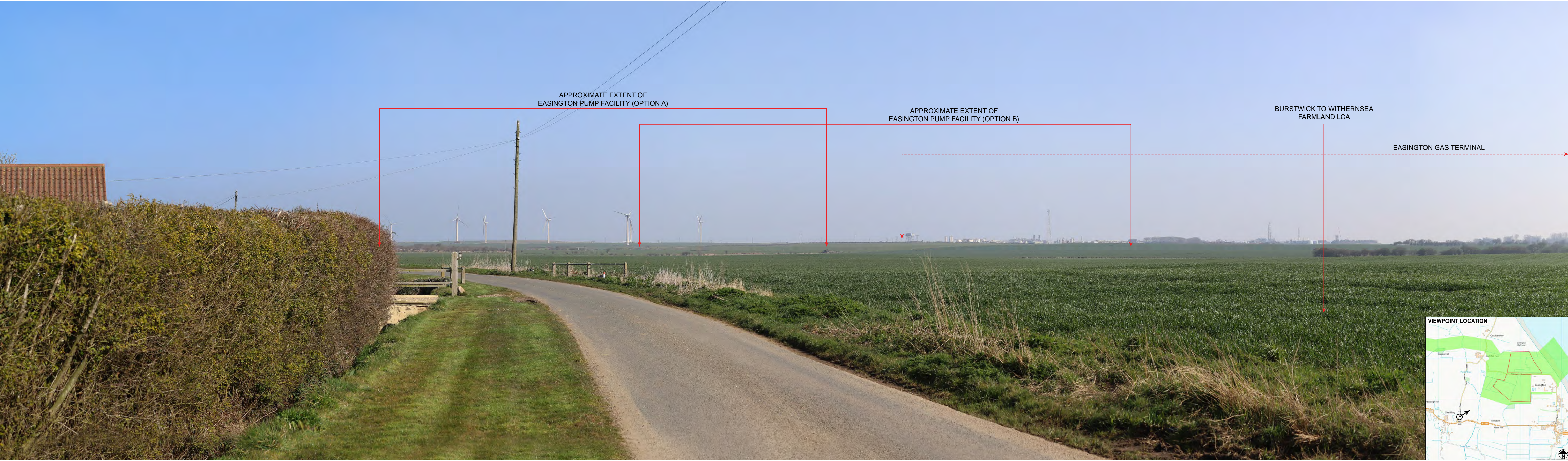
VIEWPOINT INFORMATION : VIEWPOINT 09-07A - View from Southfield Farm, Warmer Lane					
CAMERA MAKE AND MODEL:	Canon EOS 6D MkII	DATE AND TIME:	24/03/2022 @ 15:00	DIRECTION OF VIEW:	East
LENS AND FOCAL LENGTH:	Canon EF 50mm f/1.4 USM	EASTING & NORTHING:	538073, 421031	DISTANCE FROM AGI LOCATION:	652m (Option A)
SURVEY EQUIPMENT / ACCURACY:	Leica Zeno 20 RTK with Disto S910 / 2cm	VIEWPOINT HEIGHT (AOD):	12.6m	PROJECTION:	Cylindrical
LI TGN-06/19 VISUALISATION TYPE:	Type 1	HEIGHT OF CAMERA (AGL):	1.6m	HORIZONTAL FIELD OF VIEW	90°



EXISTING BASELINE VIEW

VIEWPOINT INFORMATION : VIEWPOINT 09-07B - View from Southfield Farm, Warmer Lane					
CAMERA MAKE AND MODEL:	Canon EOS 6D MkII	DATE AND TIME:	24/03/2022 @ 15:00	DIRECTION OF VIEW:	South East
LENS AND FOCAL LENGTH:	Canon EF 50mm f/1.4 USM	EASTING & NORTHING:	538073, 421031	DISTANCE FROM AGI LOCATION:	652m (Option A)
SURVEY EQUIPMENT / ACCURACY:	Leica Zeno 20 RTK with Disto S910 / 2cm	VIEWPOINT HEIGHT (AOD):	12.6m	PROJECTION:	Cylindrical
LI TGN-06/19 VISUALISATION TYPE:	Type 1	HEIGHT OF CAMERA (AGL):	1.6m	HORIZONTAL FIELD OF VIEW	90°

FIGURE 11.4
HUMBER PHOTOVIEWS



EXISTING BASELINE VIEW					
VIEWPOINT INFORMATION : VIEWPOINT 09-08 - View from Out Newton Road near properties on outskirts of Skeffling					
CAMERA MAKE AND MODEL:	Canon EOS 6D MkII	DATE AND TIME:	24/03/2022 @ 11:05	DIRECTION OF VIEW:	North East
LENS AND FOCAL LENGTH:	Canon EF 50mm f/1.4 USM	EASTING & NORTHING:	537491, 419567	DISTANCE FROM AGI LOCATION:	1121m (Option B)
SURVEY EQUIPMENT / ACCURACY:	Leica Zeno 20 RTK with Disto S910 / 2cm	VIEWPOINT HEIGHT (AOD):	6.7m	PROJECTION:	Cylindrical
LI TGN-06/19 VISUALISATION TYPE:	Type 1	HEIGHT OF CAMERA (AGL):	1.6m	HORIZONTAL FIELD OF VIEW	90°



EXISTING BASELINE VIEW					
VIEWPOINT INFORMATION : VIEWPOINT CORRIDOR 19 - View from Paull Road / PRoW PAULF05					
CAMERA MAKE AND MODEL:	Canon EOS 6D MkII	DATE AND TIME:	24/03/2022 @ 13:37	DIRECTION OF VIEW:	South
LENS AND FOCAL LENGTH:	Canon EF 50mm f/1.4 USM	EASTING & NORTHING:	517155, 427948	DISTANCE FROM AGI LOCATION:	117m (Option B)
SURVEY EQUIPMENT / ACCURACY:	Leica Zeno 20 RTK with Disto S910 / 2cm	VIEWPOINT HEIGHT (AOD):	4.5m	PROJECTION:	Cylindrical
LI TGN-06/19 VISUALISATION TYPE:	Type 1	HEIGHT OF CAMERA (AGL):	1.6m	HORIZONTAL FIELD OF VIEW	90°

FIGURE 11.4
HUMBER PHOTOVIEWS



EXISTING BASELINE VIEW

VIEWPOINT INFORMATION : VIEWPOINT CORRIDOR 20 - View from Paull Road					
CAMERA MAKE AND MODEL:	Canon EOS 6D MkII	DATE AND TIME:	24/03/2022 @ 13:55	DIRECTION OF VIEW:	North West
LENS AND FOCAL LENGTH:	Canon EF 50mm f/1.4 USM	EASTING & NORTHING:	517450, 426866	DISTANCE FROM AGI LOCATION:	67m (Option C)
SURVEY EQUIPMENT / ACCURACY:	Leica Zeno 20 RTK with Disto S910 / 2cm	VIEWPOINT HEIGHT (AOD):	3.3m	PROJECTION:	Cylindrical
LI TGN-06/19 VISUALISATION TYPE:	Type 1	HEIGHT OF CAMERA (AGL):	1.6m	HORIZONTAL FIELD OF VIEW	90°

FIGURE 11.4
HUMBER PHOTOVIEWS