

Gas Monthly Summer Update
May 2008

Gas Supply Build Up.....Page 2

Gas DemandsPage 2

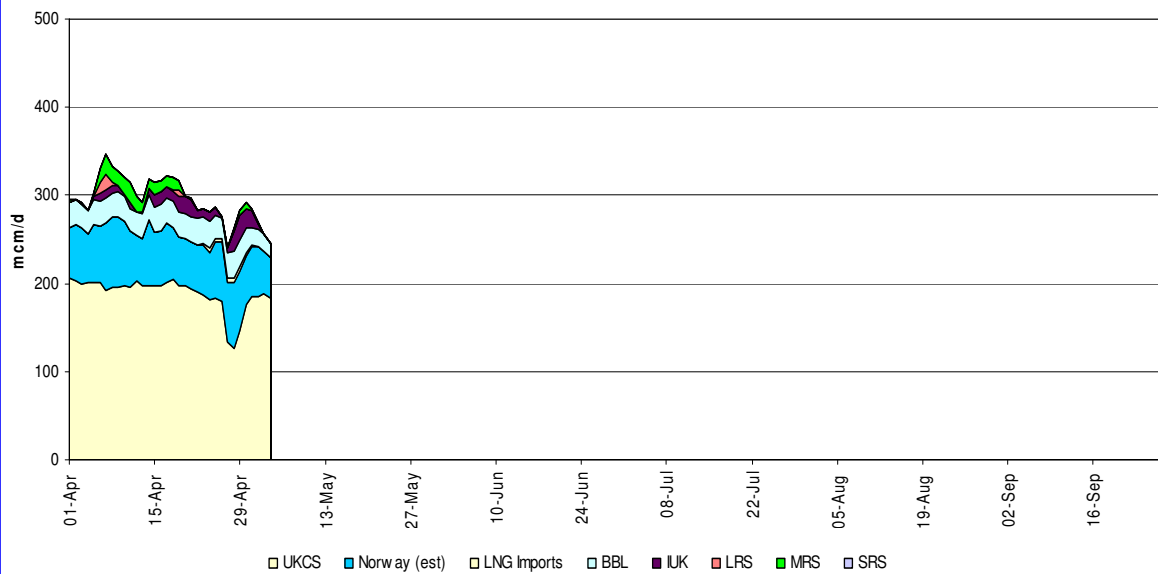
UKCS Monitor.....Page 3

Import & Storage Assessment.....Page 3

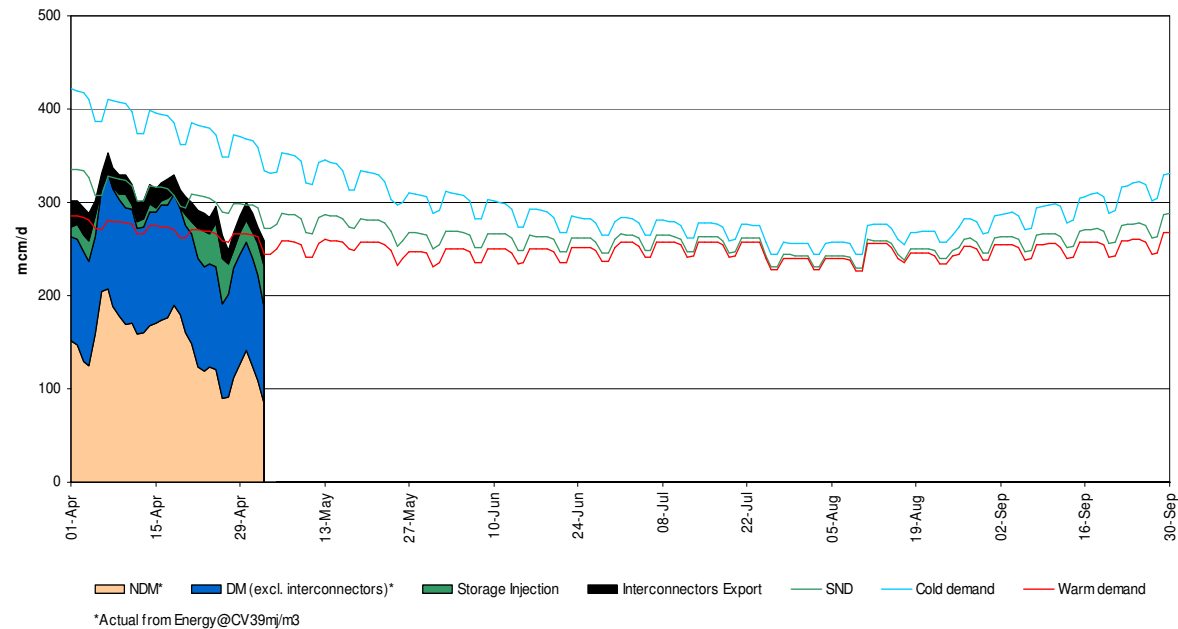
Gas Price vs IUK & Storage.....Page 4

Glossary.....Page 5

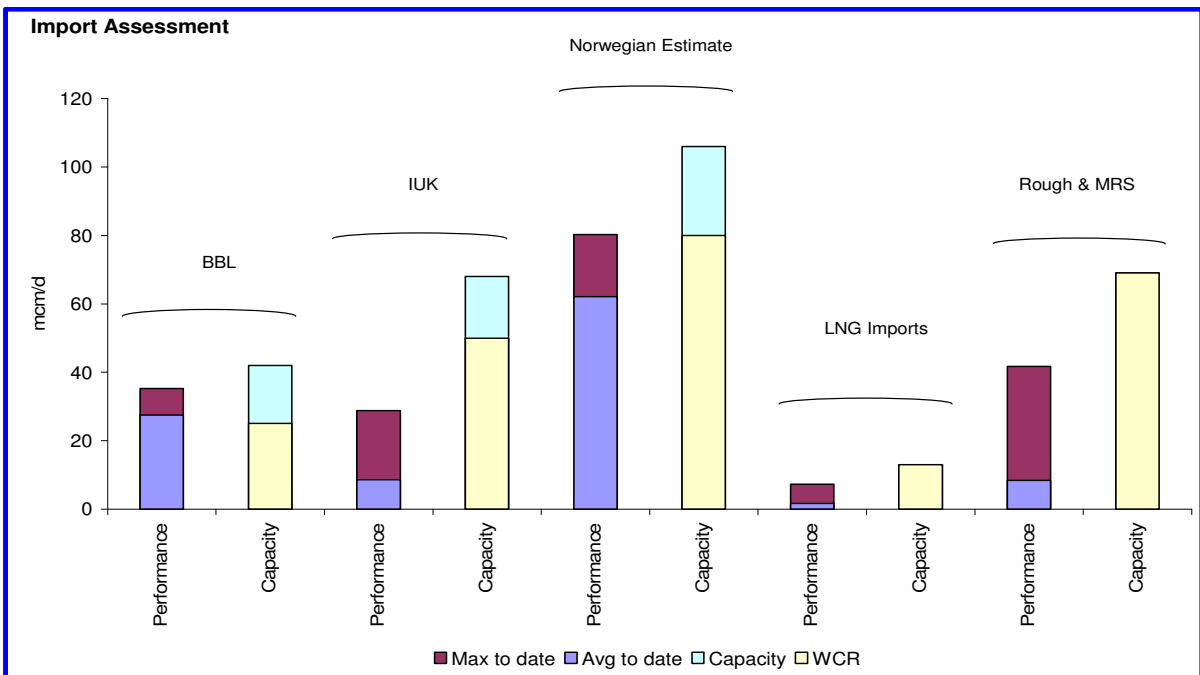
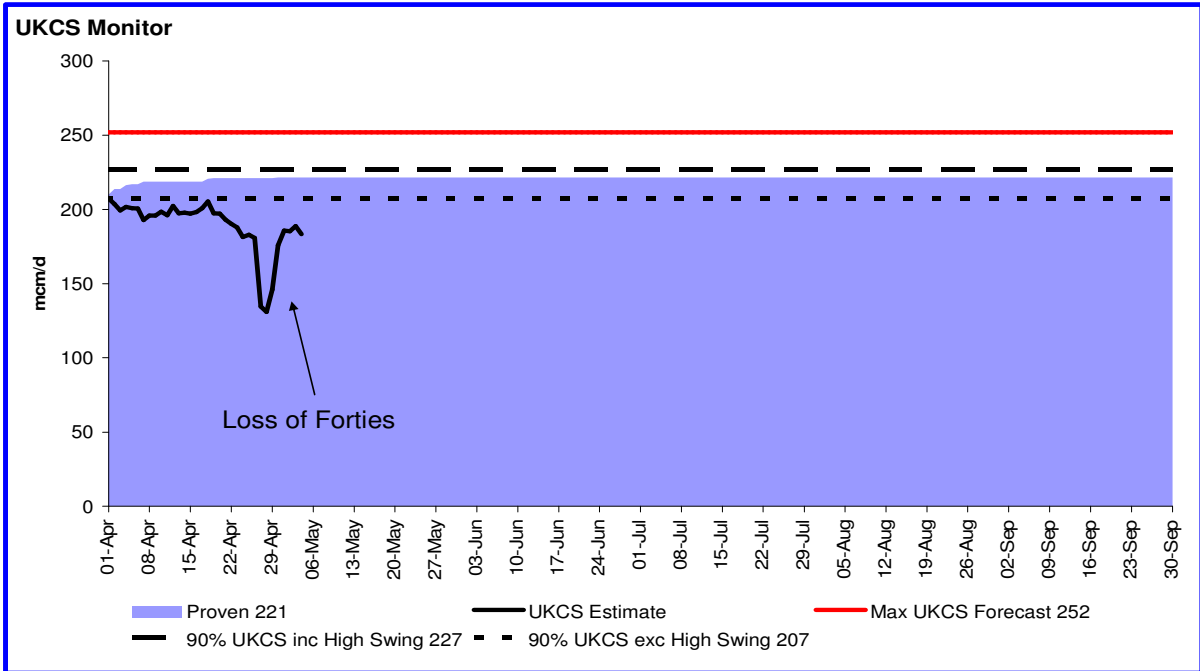
Gas Supply Build Up

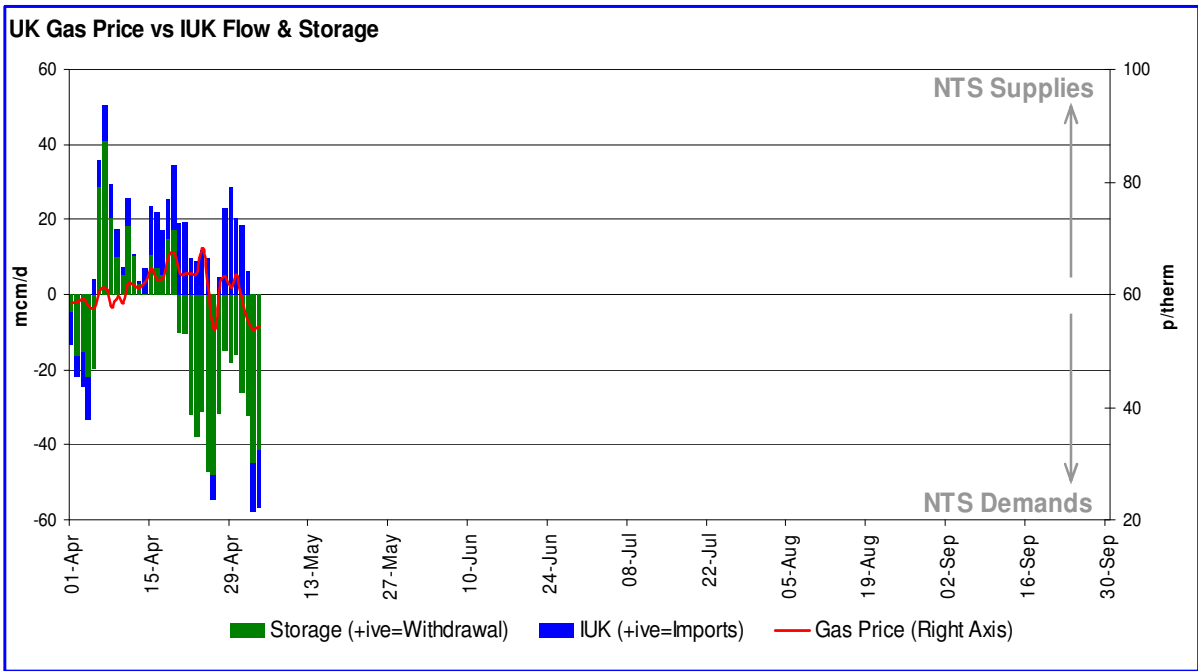


Gas Demands



*Actual from Energy@CV39mj/m3





Glossary

Gas Supply Build-up

- All historic outturn data - from 1 October to present.
- Gas Supply Build-up shows:
 - UKCS
 - Norway (Vesterled (estimate), Langeled and Tampen Link)
 - Interconnector supply (IUK and BBL)
 - LNG imports (IOG and Milford Haven when operational)
 - storage withdrawal (LRS, MRS and SRS)

All in mcm/day.

Exports to Europe and injections into storage are not shown.

Gas Demand

- Exports to Europe and storage injection are included.
- Daily seasonal normal demands are the demands that are forecast to occur in seasonal normal weather based on the weather between October 1987 and September 2004.
- Cold and warm demand profiles are calculated from the demand models and cold and warm CWVs calculated from weather data from October 1928 to September 2006.
- The cold/warm curves are 1 in 20 weekly values.
- Actual demand shows:
 - storage injection (LRS, MRS, SRS)
 - Interconnector export (IUK)
 - LDZ Non Daily Metered (LDZ NDM) (smaller Distribution Network demands including domestic, commercial and smaller industrial)
 - Daily Metered (DM) (mainly large industrials and power station demand)

All in mcm/day.

UKCS Monitor

- Shows actual UK Continental Shelf (UKCS) performance to-date this winter with a view of expected maximum UKCS performance.
- Proven: Aggregate of maximum daily UKCS terminal flows to date.
- UKCS Estimate: Daily UKCS gas flows (Estimated Norwegian flows have been deducted).
- Max UKCS Forecast: Our 100% UKCS forecast (maximum capability).
- 90% UKCS: Gas levels which may be available under high demand or price conditions.
- "High Swing": Additional gas which may be available, if prices or demands are sufficiently high.

Import Assessment

- Max to date: Maximum flows observed this winter
- Avg to date: Average flows observed this winter
- WCR: Winter Consultation Report view on anticipated supplies.
- Capacity: Maximum theoretical capacity

UK Gas Prices vs IUK & Storage

- Left axis:
 - stacked bar chart showing pipeline import/export flows to and from Interconnector UK (IUK) and storage injection/ withdrawal.
 - Imports shows actual net flows to and from UK's only bi-directional interconnector, the Belgian Interconnector IUK:
 - +ve implies imports to UK, -ve implies exports from UK
 - Actual storage includes LRS, MRS and SRS:
 - +ve implies injection from NTS (NTS demand), -ve implies withdrawal into NTS (NTS supply)
- Right axis:
 - UK gas prices showing actual on the day gas price (System Average Price (SAP)) in p/therm.