

Fast Reserve

Market Information for Tenders for February 2009

National Grid publishes this information, in order to inform potential participants for the Fast Reserve tender round for February 2009.

Fast Reserve Availability

Our indicative requirement for Fast Reserve in February 2009 is shown on a Settlement Period basis in Figure 1. This requirement covers weekdays, Saturdays, Sundays and Bank Holidays.

Fast Reserve Daily Requirement for February 2009

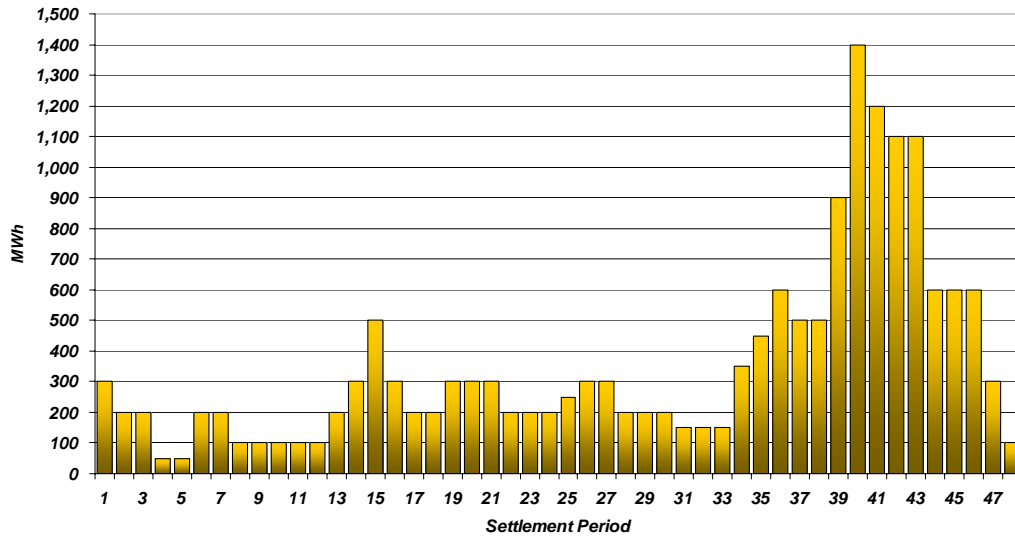


Figure 1

Figure 1 gives an indication of the times of day when Fast Reserve is most useful to National Grid. The actual amount of Fast Reserve "holding" varies from day to day, according to system conditions.

Fast Reserve Utilisation

Figure 2 shows the daily utilisation of Fast Reserve in the BM and elsewhere during November 2008 and December 2008. The BM information is based on the aggregate of Offers plus Bids accepted to provide Fast Reserve or an equivalent service.

Daily Accepted Fast Reserve Volume

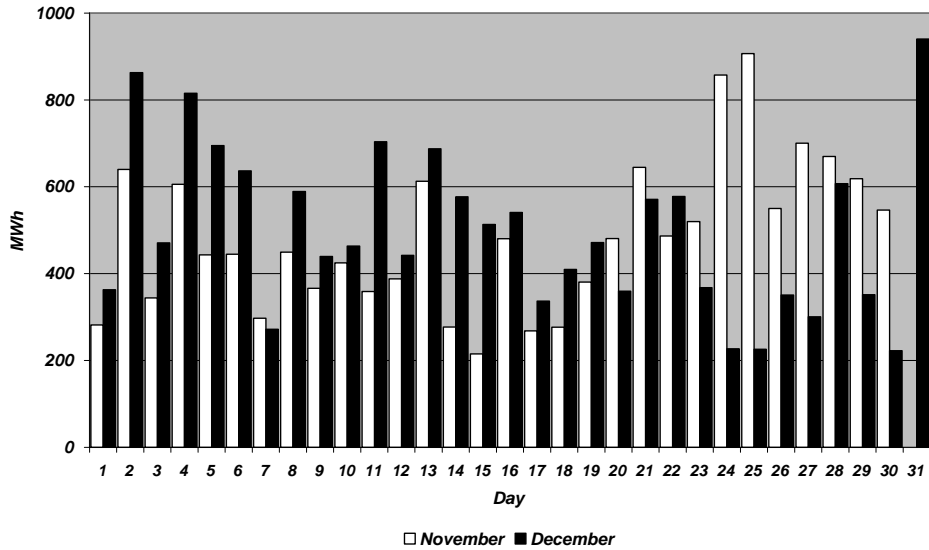


Figure 2

Figure 3 represents this data as total utilisation by Settlement Period across each month. This shows the daily profile of Fast Reserve utilisation.

Period Accepted Fast Reserve Volume

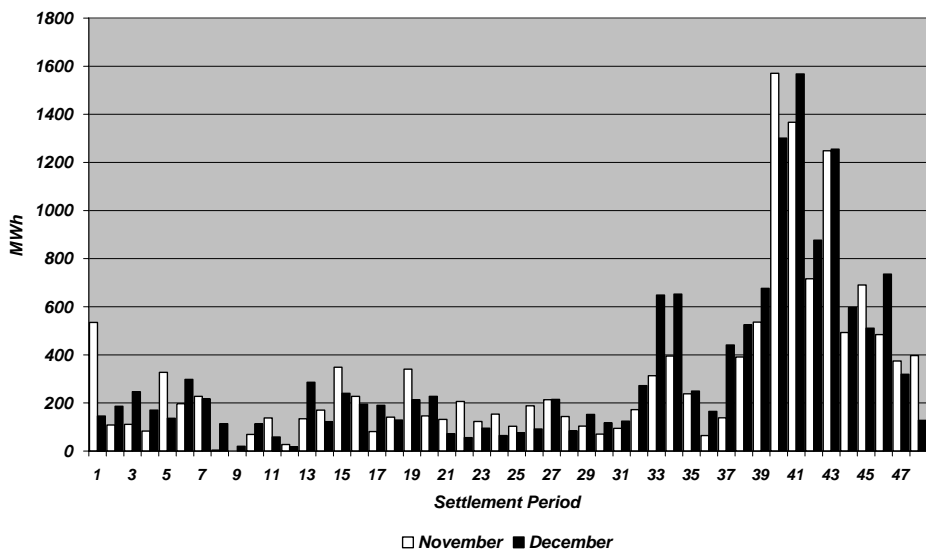


Figure 3

Figure 4 represents the same historical data, as an average utilisation price per Settlement Period for each month.

Period Average Fast Reserve Utilisation Price

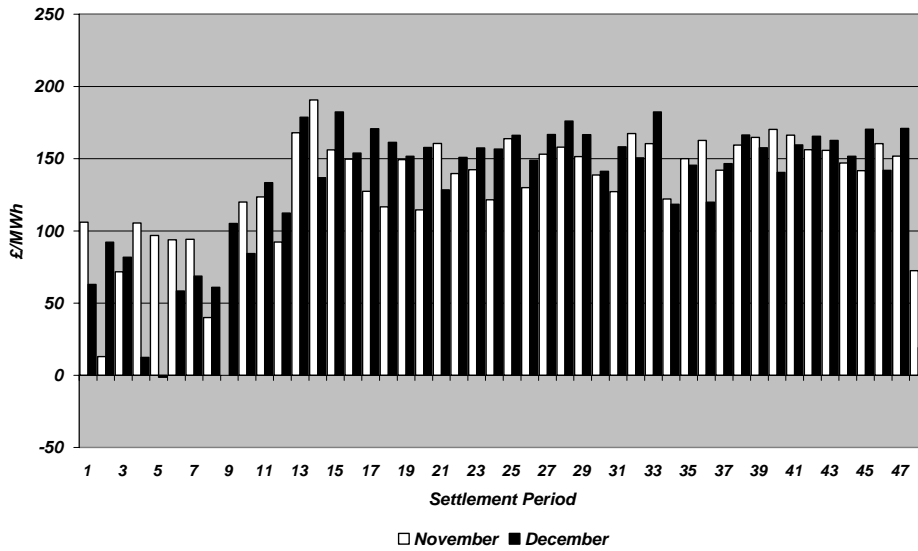


Figure 4

Finally, the same data is used in Figure 5, below, to show the profile of total Fast Reserve utilisation expenditure per Settlement Period for each month.

Period Total Fast Reserve Utilisation Expenditure

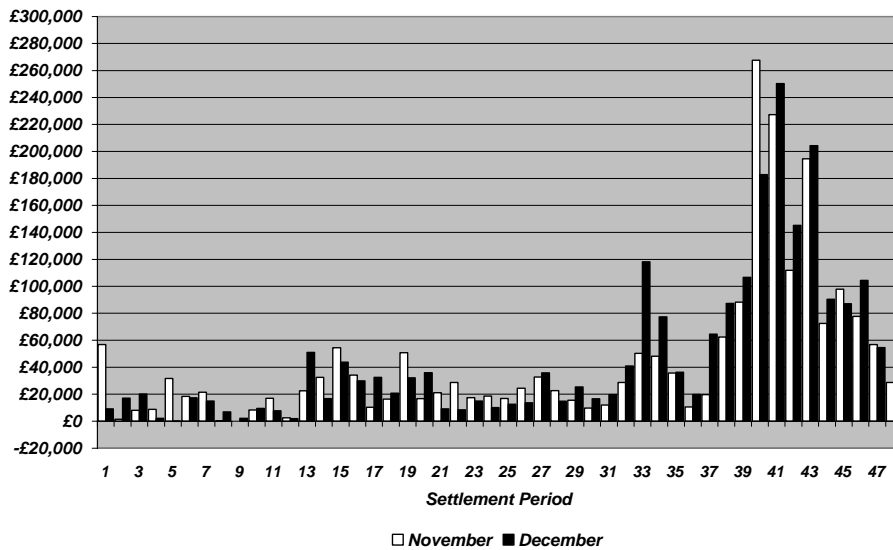


Figure 5

The total volumes of Fast Reserve utilisation of **14.54GWh** for November 2008 and **15.39GWh** for December 2008, broken down into price bands are as follows:

November	Price band (£/MWh range)	Volume (MWh)	Average Price (£/MWh)	Cost (£m)
OFFERS	2000 to 99999	0	n/a	n/a
	1000 to 2000	0	n/a	n/a
	300 to 1000	0	n/a	n/a
	0 to 300	13,074	153	2.00
Total		13.07GWh		£2.00m
BIDS	0 to 300	-881	32	-0.03
	-300 to 0	-512	-205	0.10
	-1000 to -300	-69	-495	0.03
	-2000 to -1000	0	n/a	n/a
	-99999 to -2000	0	n/a	n/a
Total		-1.46GWh		£0.11m
Total		14.54GWh		£2.11m

December	Price band (£/MWh range)	Volume (MWh)	Average Price (£/MWh)	Cost (£m)
OFFERS	2000 to 99999	0	n/a	n/a
	1000 to 2000	0	n/a	n/a
	300 to 1000	0	n/a	n/a
	0 to 300	13,418	155	2.08
Total		13.42GWh		£2.08m
BIDS	0 to 300	-1,357	19	-0.03
	-300 to 0	-492	-198	0.10
	-1000 to -300	-123	-556	0.07
	-2000 to -1000	0	n/a	n/a
	-99999 to -2000	0	n/a	n/a
Total		-1.97GWh		£0.14m
Total		15.39GWh		£2.23m

For the month of February 2009, tenders from eligible Service Providers for firm Fast Reserve should be submitted to National Grid by Thursday 15th January 2009 (business day 10). National Grid will notify Service Providers of the outcome of the tender assessment by Thursday 22nd January 2009 (business day 15).

Tenders should be sent for the attention of:

Bea Ennim
Network Operations
National Grid Electricity Transmission plc
National Grid House
Warwick Technology Park
Gallows Hill
Warwick
CV34 6DA

Tenders can be sent by fax to Bea Ennim on 01926 656612.