

Firm Frequency Response

Market Information for Tenders for FEBRUARY 2009

National Grid wishes to highlight to participants its overnight requirement for FFR.

Total Frequency Response Requirements

Our indicative daily Total Requirement for Frequency Response for the above month is shown on a Settlement Period basis for weekdays, in Figure 1 and for Saturdays, Sundays and Bank Holidays, in Figure 2. The graphs show the requirement at maximum frequency deviation: 0.8 Hz for Primary and 0.5 Hz for Secondary and High Response.

Figure 1

Indicative Total Response Requirement - Weekday

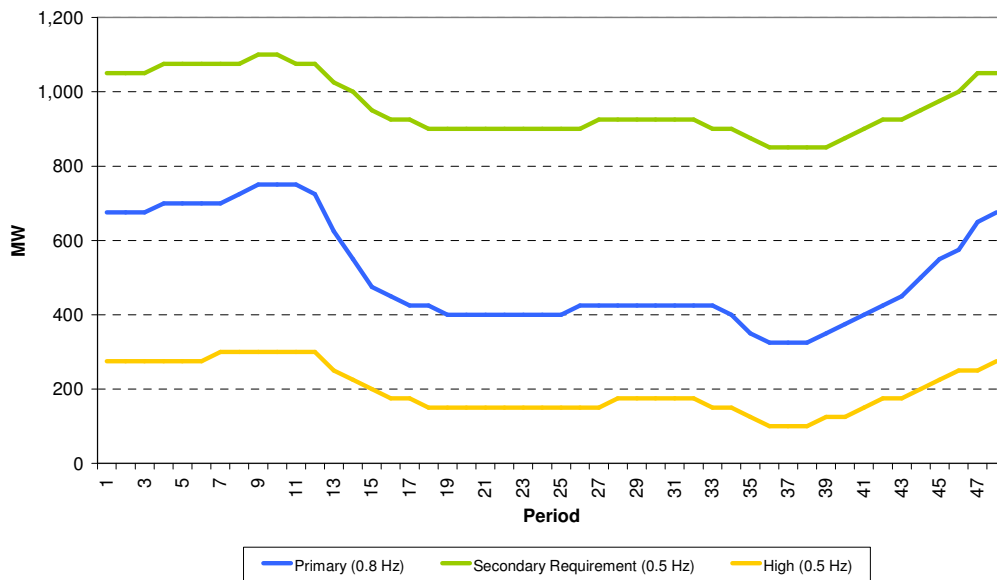
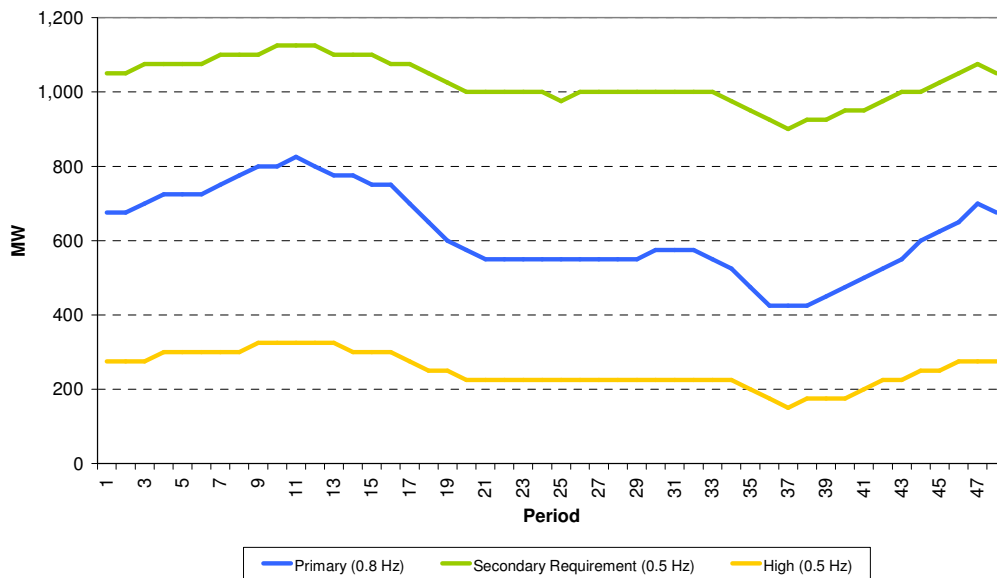


Figure 2

Indicative Total Response Requirement - Weekend



Minimum Dynamic Response Requirement

The indicative minimum required levels for Dynamic response are shown for Weekdays, Figure 3, and Saturdays, Sundays and Bank Holidays, Figure 4. The levels are shown for delivery at 0.5 Hz deviation, although 0.2 Hz is the largest frequency deviation within normal operational range. The total amount of response delivered by Dynamic providers contributes to meeting the Total Response Requirement, Figures 1 and 2, above.

Indicative Minimum Dynamic Response Requirement - Weekday

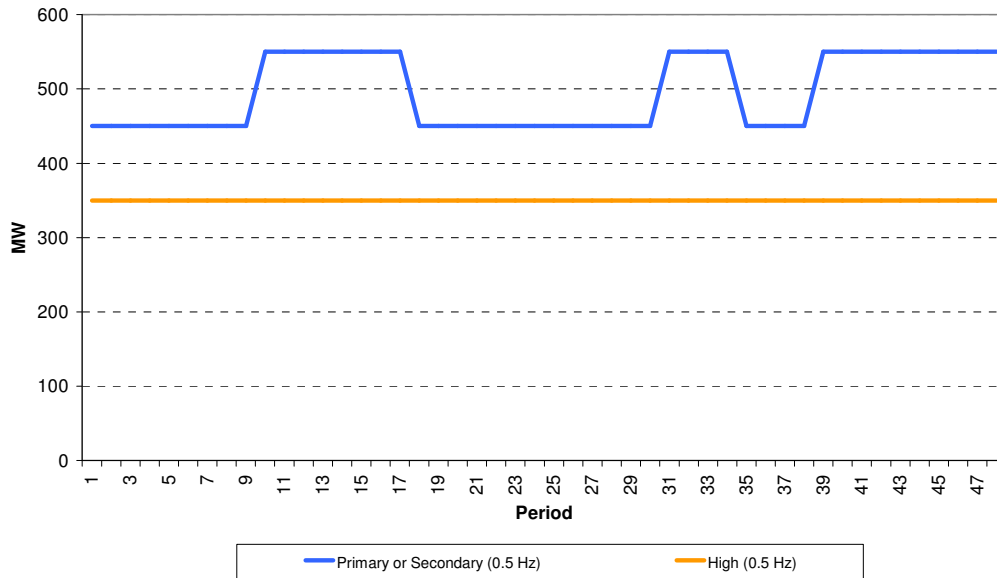


Figure 3

Indicative Minimum Dynamic Response Requirement - Weekend

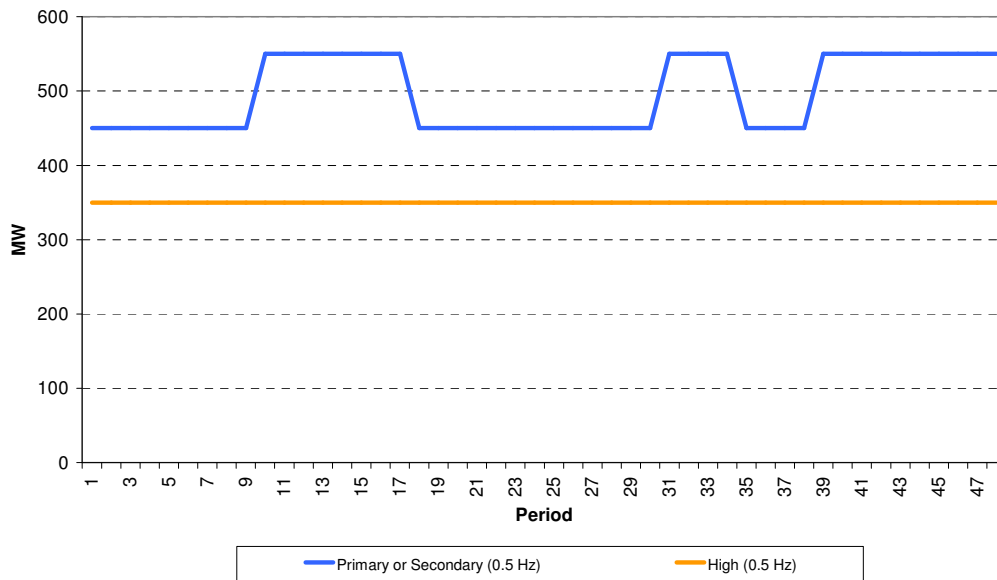


Figure 4