

Fast Reserve

Market Information for Tenders for July 2009

National Grid publishes this information, in order to inform potential participants for the Fast Reserve tender round for July 2009.

Fast Reserve Availability

Our indicative requirement for Fast Reserve in July 2009 is shown on a Settlement Period basis in Figure 1. This requirement covers weekdays, Saturdays, Sundays and Bank Holidays.

Fast Reserve Daily Requirement for July 2009

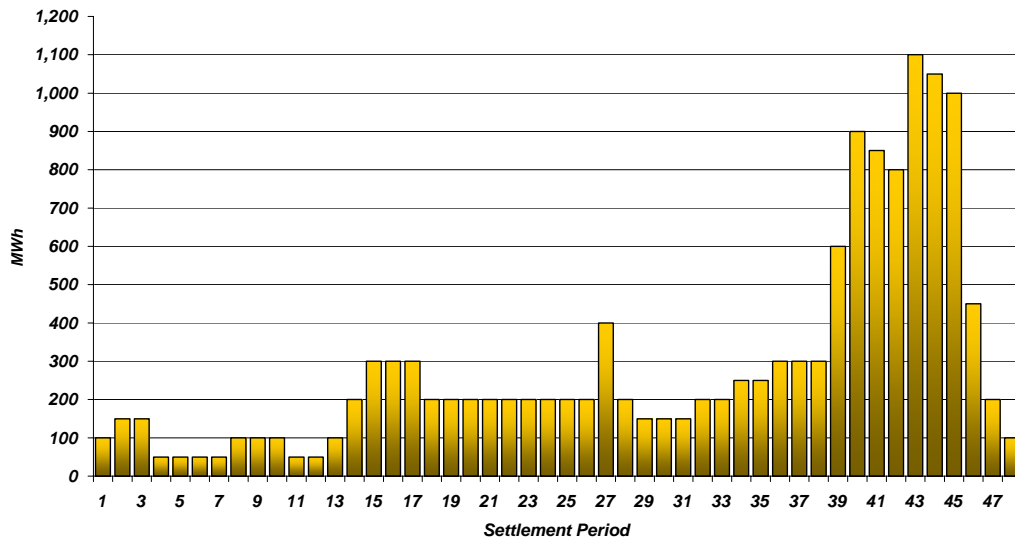


Figure 1

Figure 1 gives an indication of the times of day when Fast Reserve is most useful to National Grid. The actual amount of Fast Reserve "holding" varies from day to day, according to system conditions.

Fast Reserve Utilisation

The following BM information is based on the aggregate of Offers plus Bids accepted to provide Fast Reserve or an equivalent service. Note that the data for May 2009 contains both out-turn and forecast.

Figure 2 shows the daily utilisation of Fast Reserve in the BM and elsewhere during April 2009 and May 2009.

Daily Accepted Fast Reserve Volume

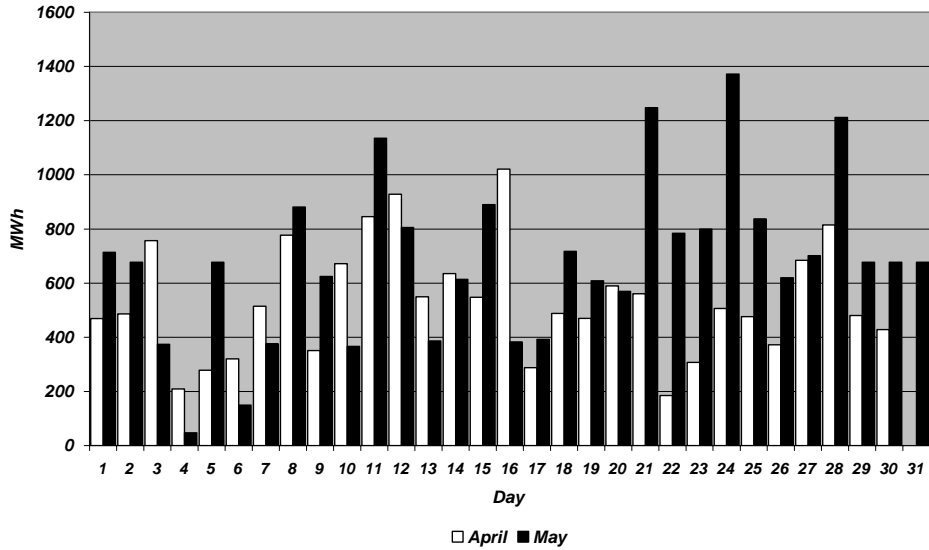


Figure 2

Figure 3 represents this data as total utilisation by Settlement Period across each month. This shows the daily profile of Fast Reserve utilisation.

Period Accepted Fast Reserve Volume

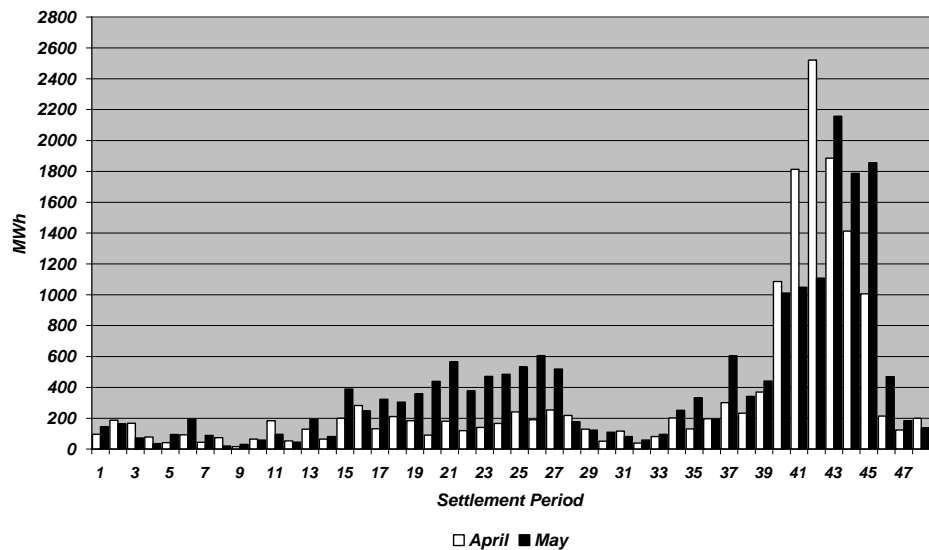


Figure 3

Figure 4 represents the same historical data, as an average utilisation price per Settlement Period for each month.

Period Average Fast Reserve Utilisation Price

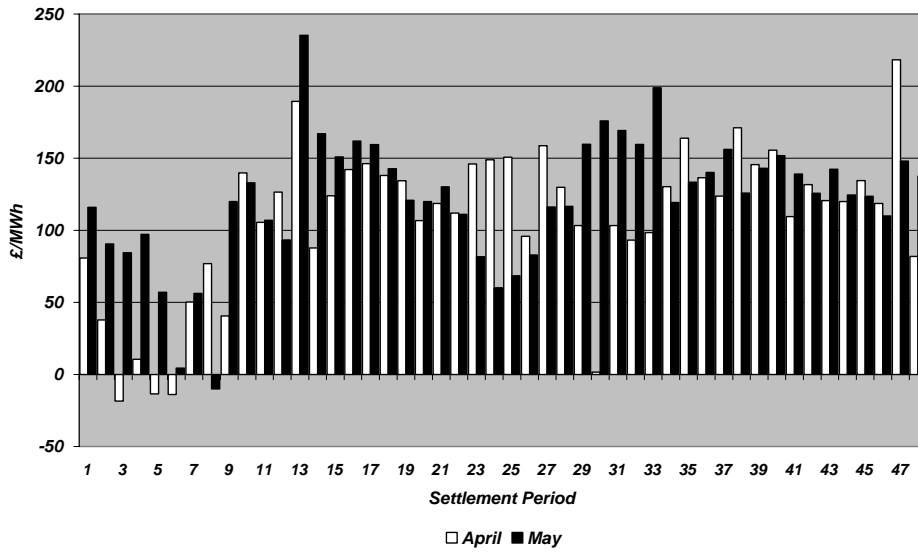


Figure 4

Finally, the same data is used in Figure 5, below, to show the profile of total Fast Reserve utilisation expenditure per Settlement Period for each month.

Period Total Fast Reserve Utilisation Expenditure

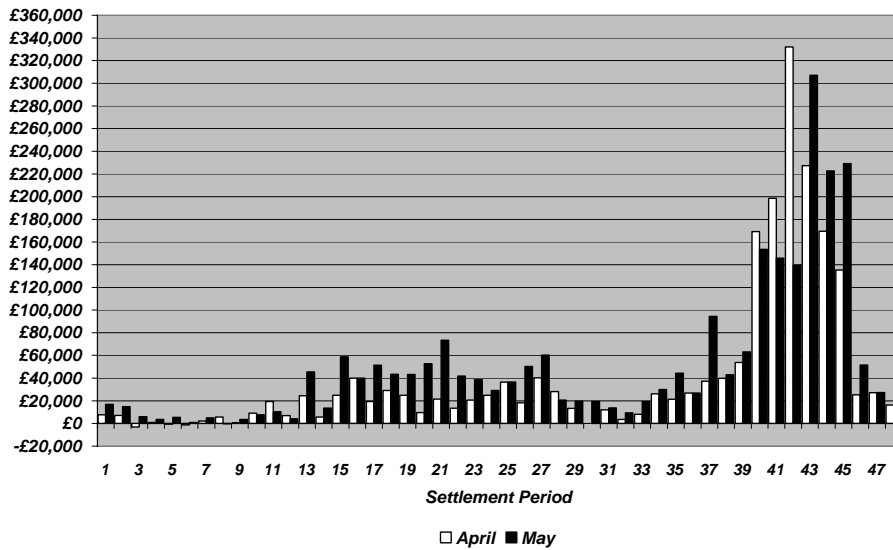


Figure 5

The total volumes of Fast Reserve utilisation of **16.01GWh** for April 2009 and **19.49GWh** for May 2009, broken down into price bands are as follows:

April	Price band (£/MWh range)	Volume (MWh)	Average Price (£/MWh)	Cost (£m)
OFFERS	2000 to 99999	0	n/a	n/a
	1000 to 2000	0	n/a	n/a
	300 to 1000	109	350	0.04
	0 to 300	13,026	145	1.89
Total		13.13GWh		£1.93m
BIDS	0 to 300	-2,480	20	-0.05
	-300 to 0	-365	-234	0.09
	-1000 to -300	-30	-350	0.01
	-2000 to -1000	0	n/a	n/a
	-99999 to -2000	0	n/a	n/a
Total		-2.87GWh		£0.05m
Total		16.01GWh		£1.98m

May	Price band (£/MWh range)	Volume (MWh)	Average Price (£/MWh)	Cost (£m)
OFFERS	2000 to 99999	0	n/a	n/a
	1000 to 2000	0	n/a	n/a
	300 to 1000	39	332	0.01
	0 to 300	15,294	160	2.45
Total		15.33GWh		£2.46m
BIDS	0 to 300	-3,819	20	-0.08
	-300 to 0	-300	-174	0.05
	-1000 to -300	-39	-418	0.02
	-2000 to -1000	0	n/a	n/a
	-99999 to -2000	0	n/a	n/a
Total		-4.16GWh		£-0.01m
Total		19.49GWh		£2.45m

For the month of July 2009, tenders from eligible Service Providers for firm Fast Reserve should be submitted to National Grid by 1st June 2009 (business day 1) for multi-month tenders, or 3rd June 2009 (business day 3) for single month tenders. National Grid will notify Service Providers of the outcome of the tender assessment by 12th June 2009 (business day 10).

Tenders should be sent for the attention of:

Bea Ennim
Network Operations
National Grid Electricity Transmission plc
National Grid House
Warwick Technology Park
Gallows Hill
Warwick
CV34 6DA

Tenders can be sent by fax to Bea Ennim on 01926 656613.