

National Grid

Operational Performance of BMUs

Richard Price



National Grid

Items to cover

- ◆ PN following performance
- ◆ Specific examples of poor performance
- ◆ BOA duration and information imbalance
- ◆ Summary



PN following performance

- ◆ Under NETA, NGC is taking a very close interest in the PN following performance of BMUs
- ◆ Generally since NETA Go-Live, the Operational Performance of BMUs has been reasonable
- ◆ Areas of concern were described at the last forum which caused NGC problems balancing the system
- ◆ Some areas have improved - we are still looking for further improvements to reduce impact on system balancing and market prices



PN following analysis so far

- ◆ 14 Significant Incident Reports requested relating to BMU PN following issues
- ◆ 93 BMUs investigated in detail for poor performance (~2 per day)
- ◆ Letters sent to participants to remind them of their Grid Code obligations

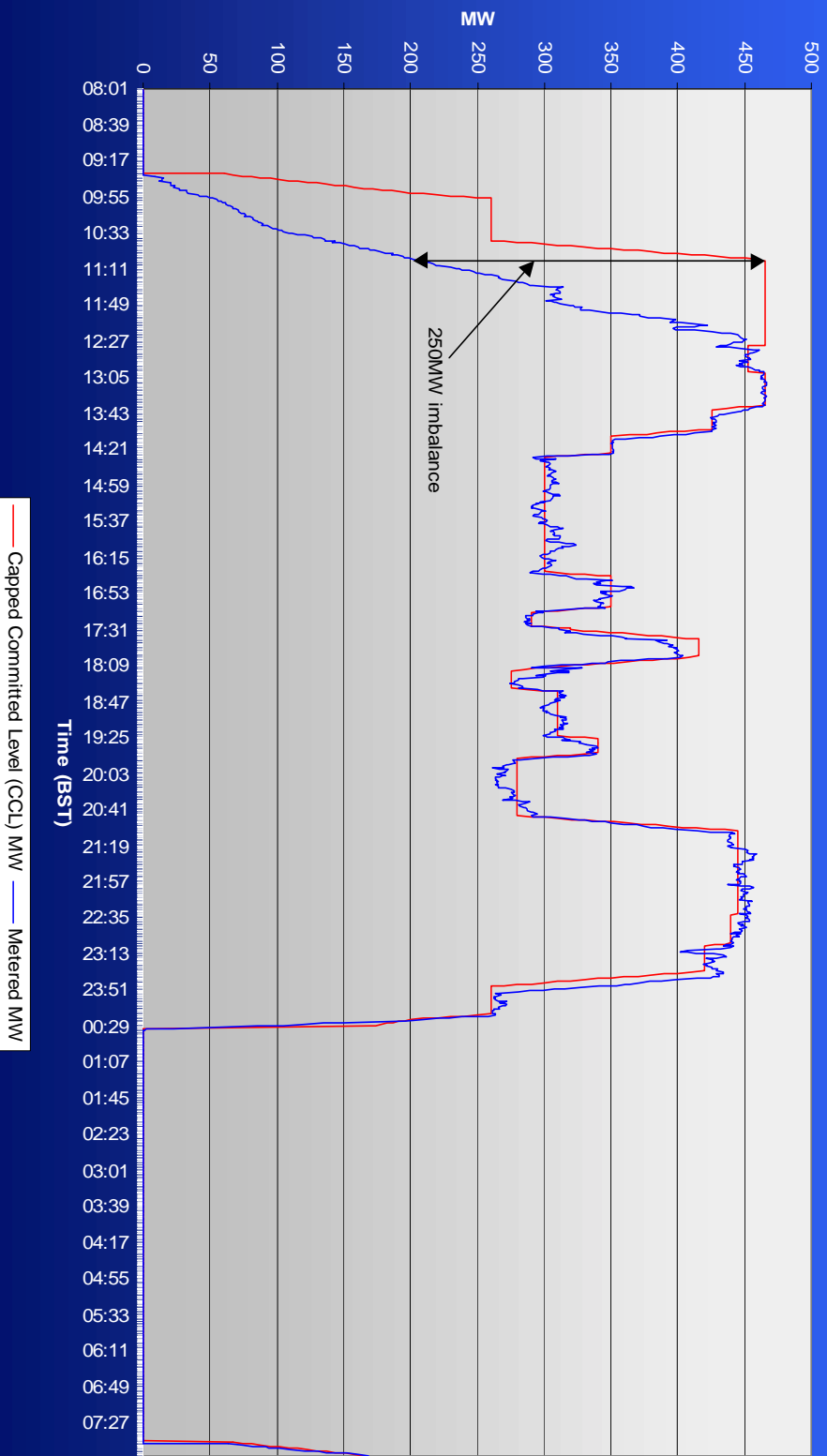


Examples of Poor PN Following

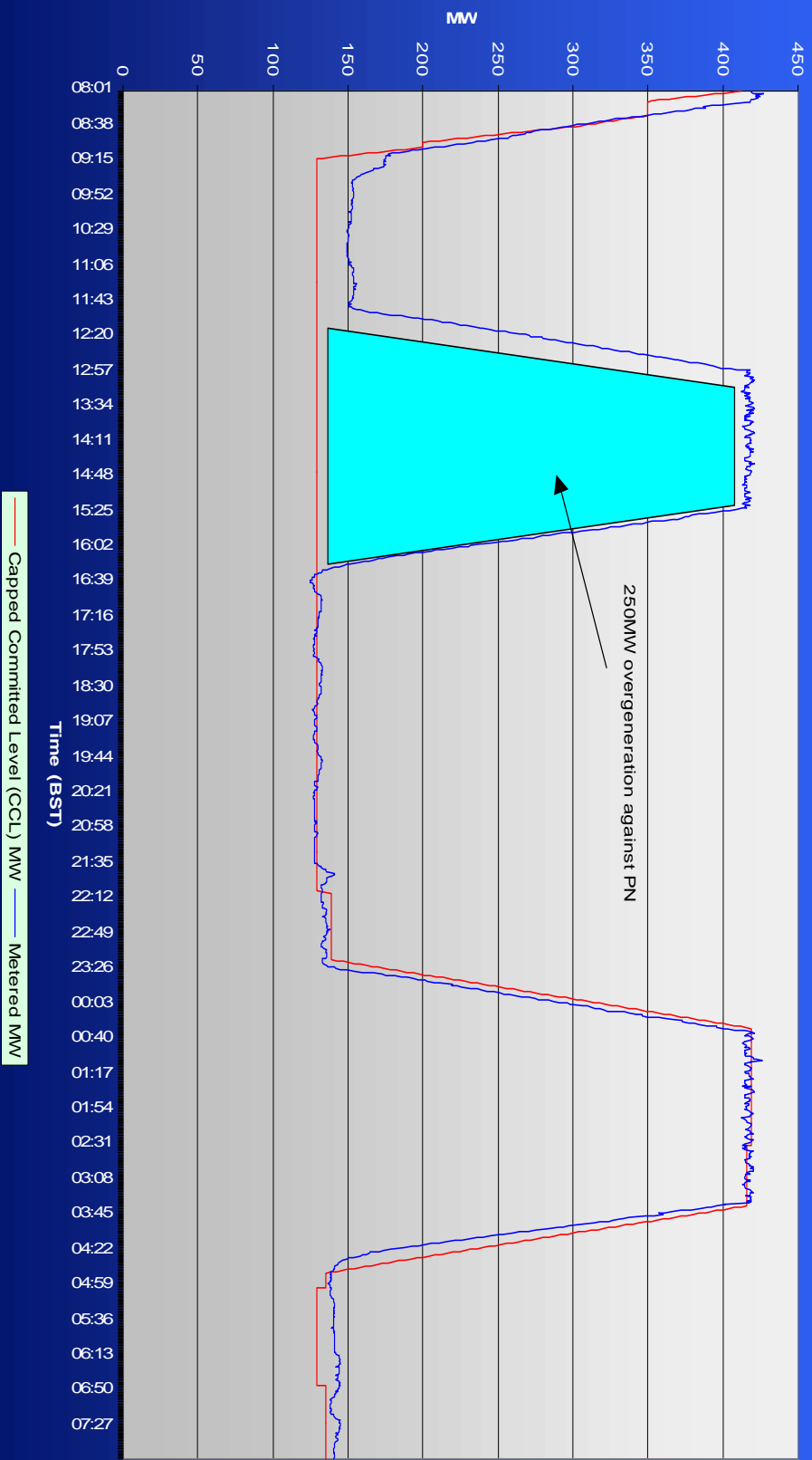
- ◆ Shortfall due to slow ramp
- ◆ Significant overgeneration against PN
- ◆ Inaccurate MEL redeclaration
- ◆ Step change in MEL redec
- ◆ Missed deload point - overgeneration
- ◆ Demand BMU performance



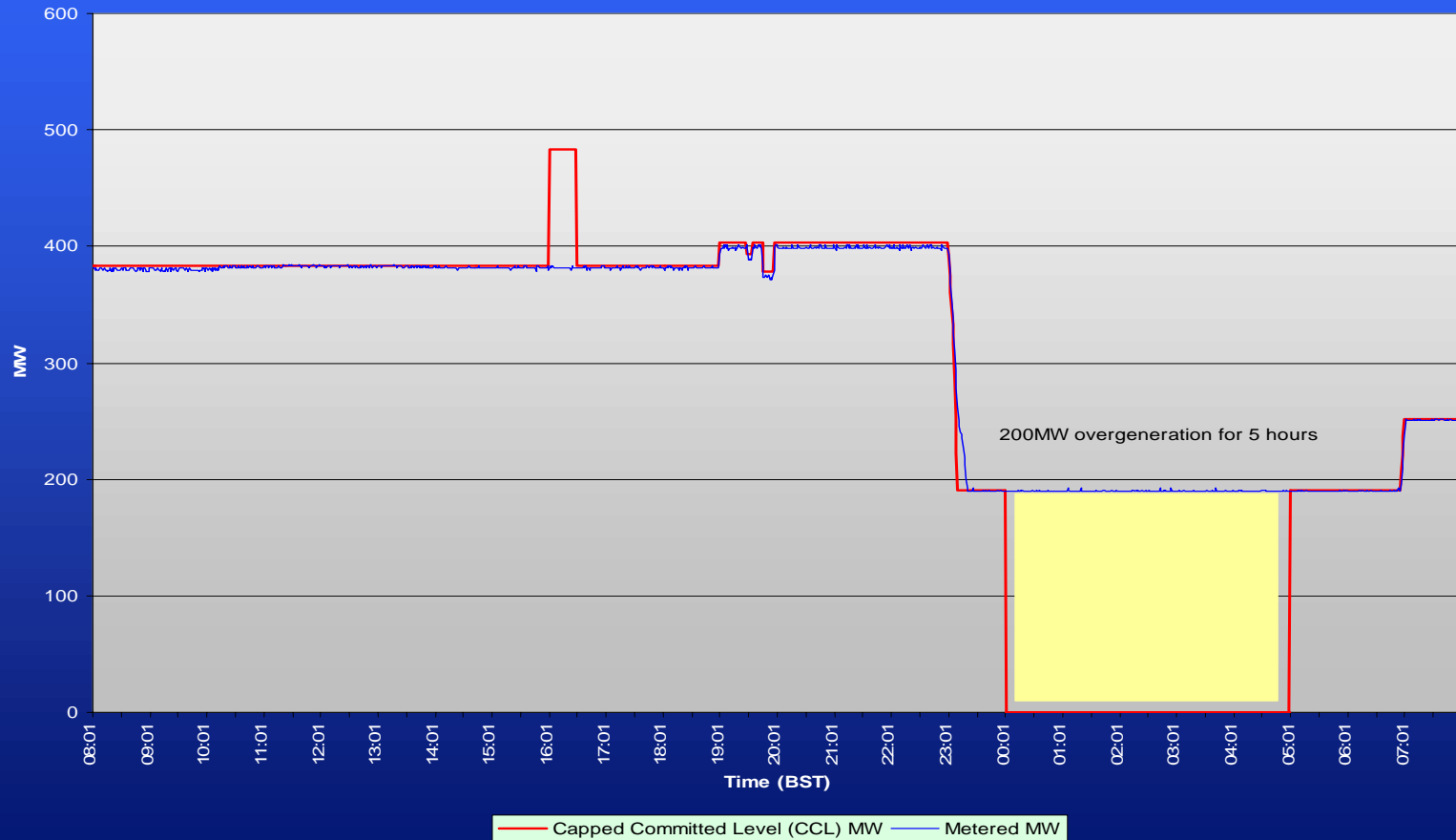
Shortfall due to slow ramp



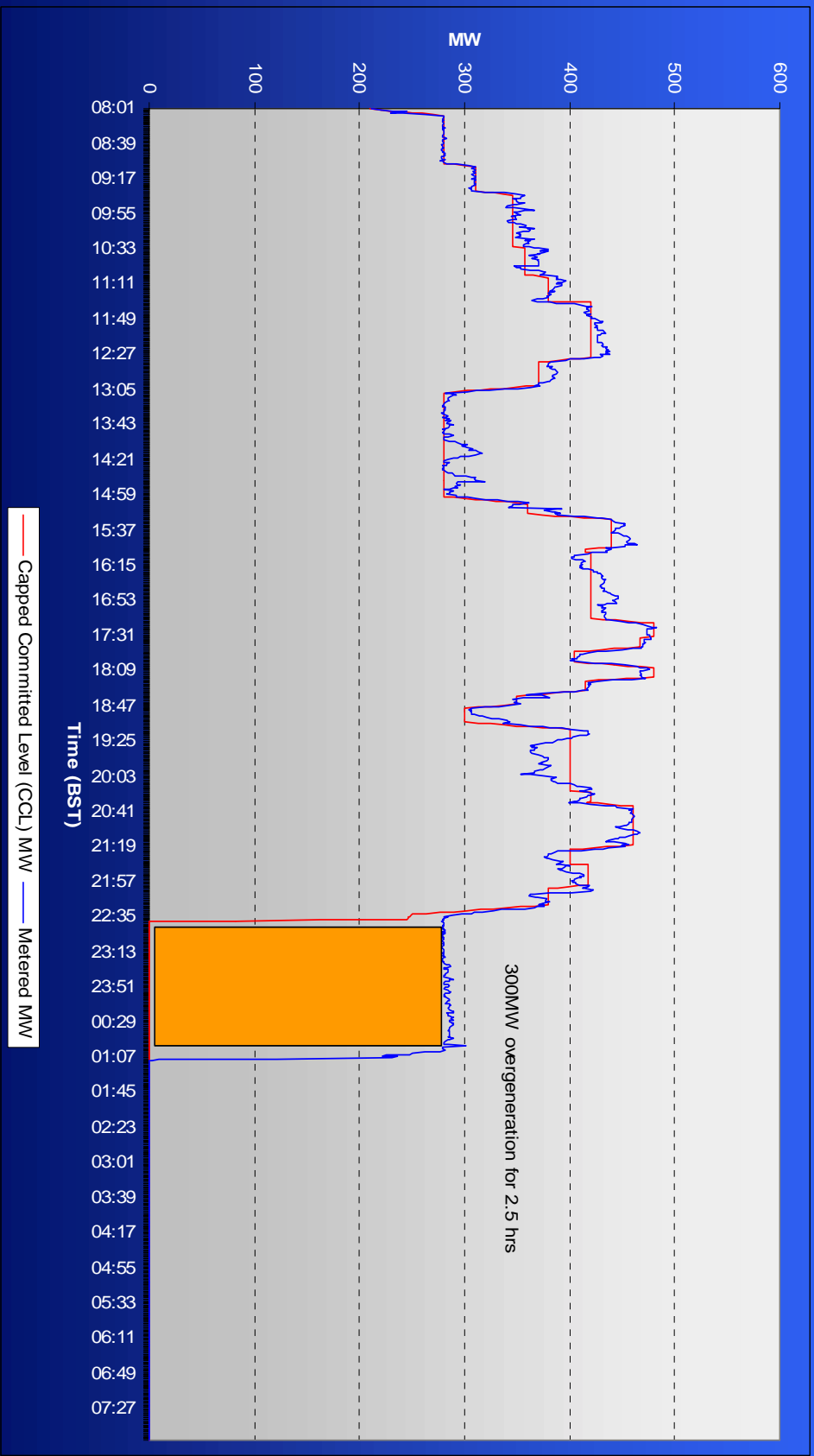
Overgeneration against PN



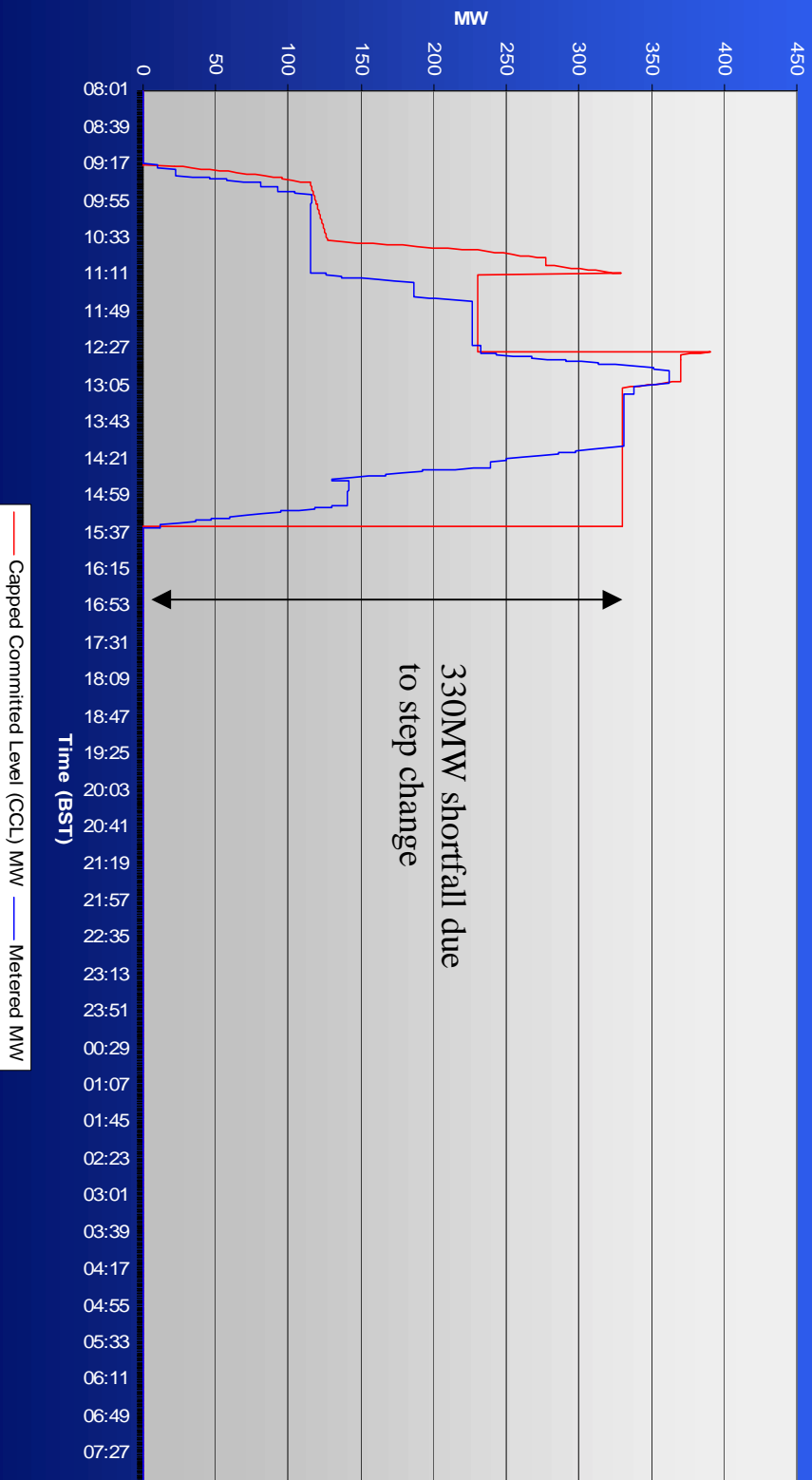
Overgeneration against PN



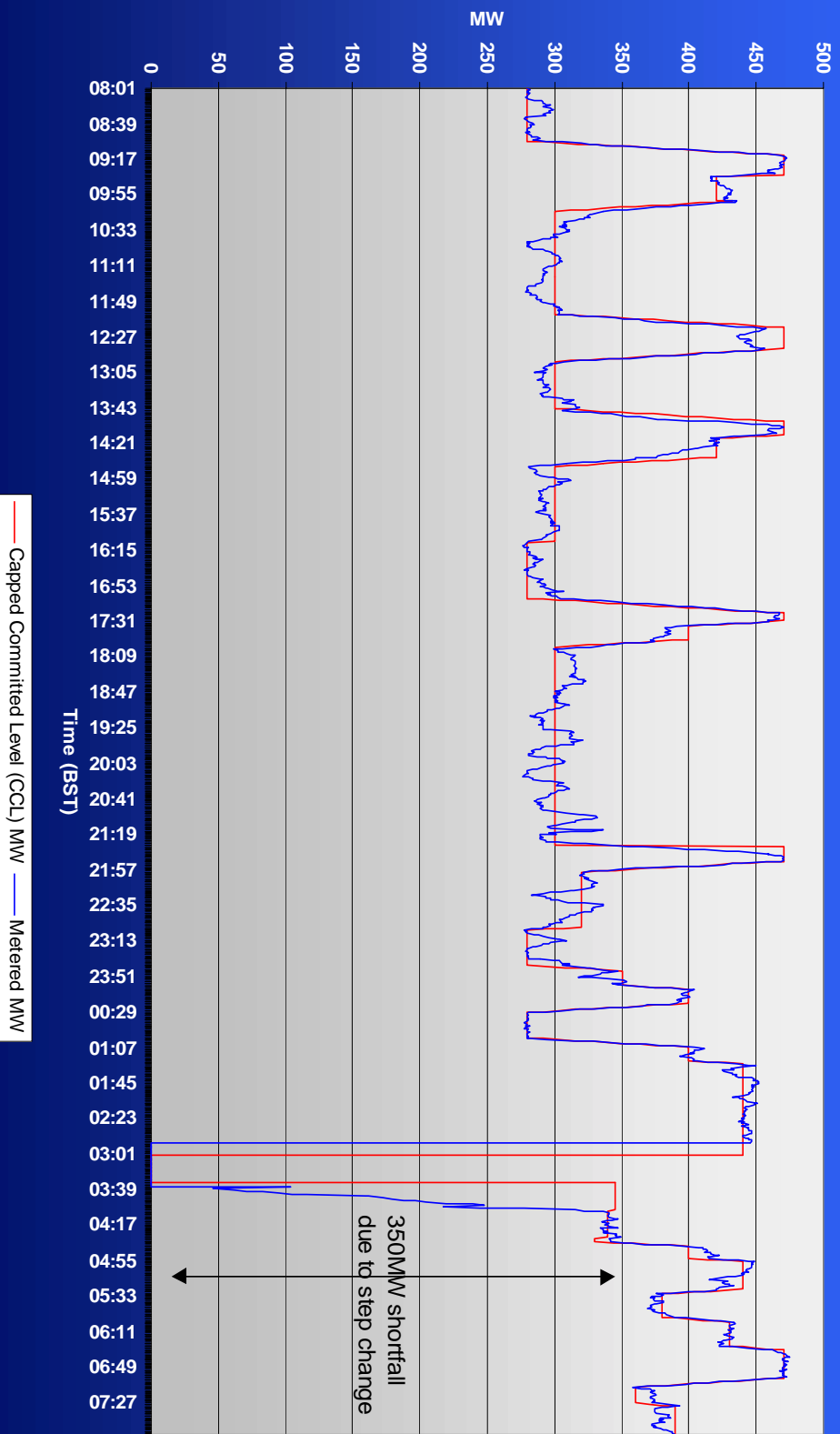
Overgeneration against PN



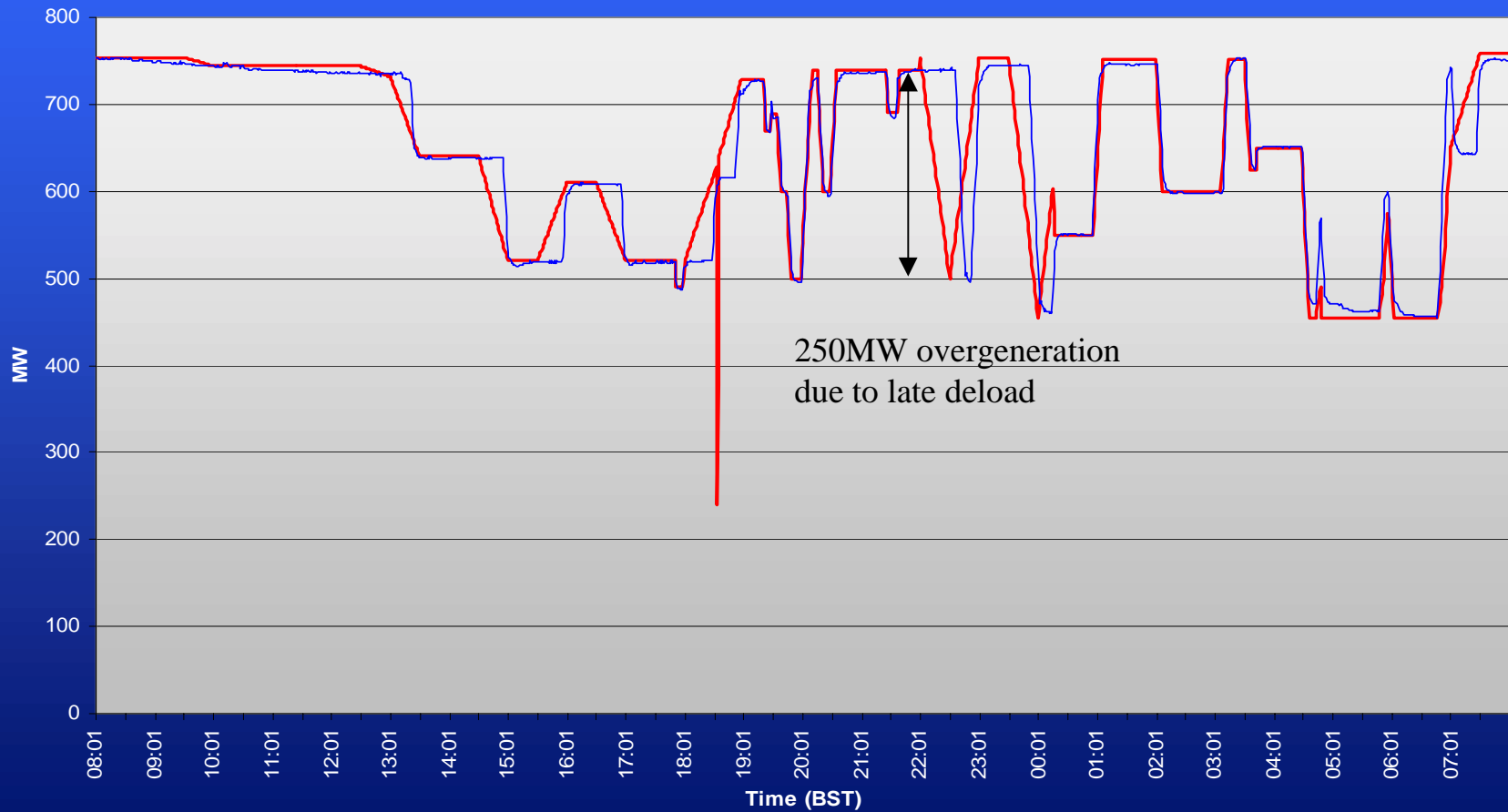
Inaccurate MEL redeclaration



Step change in MEL reddec



Missed deload point

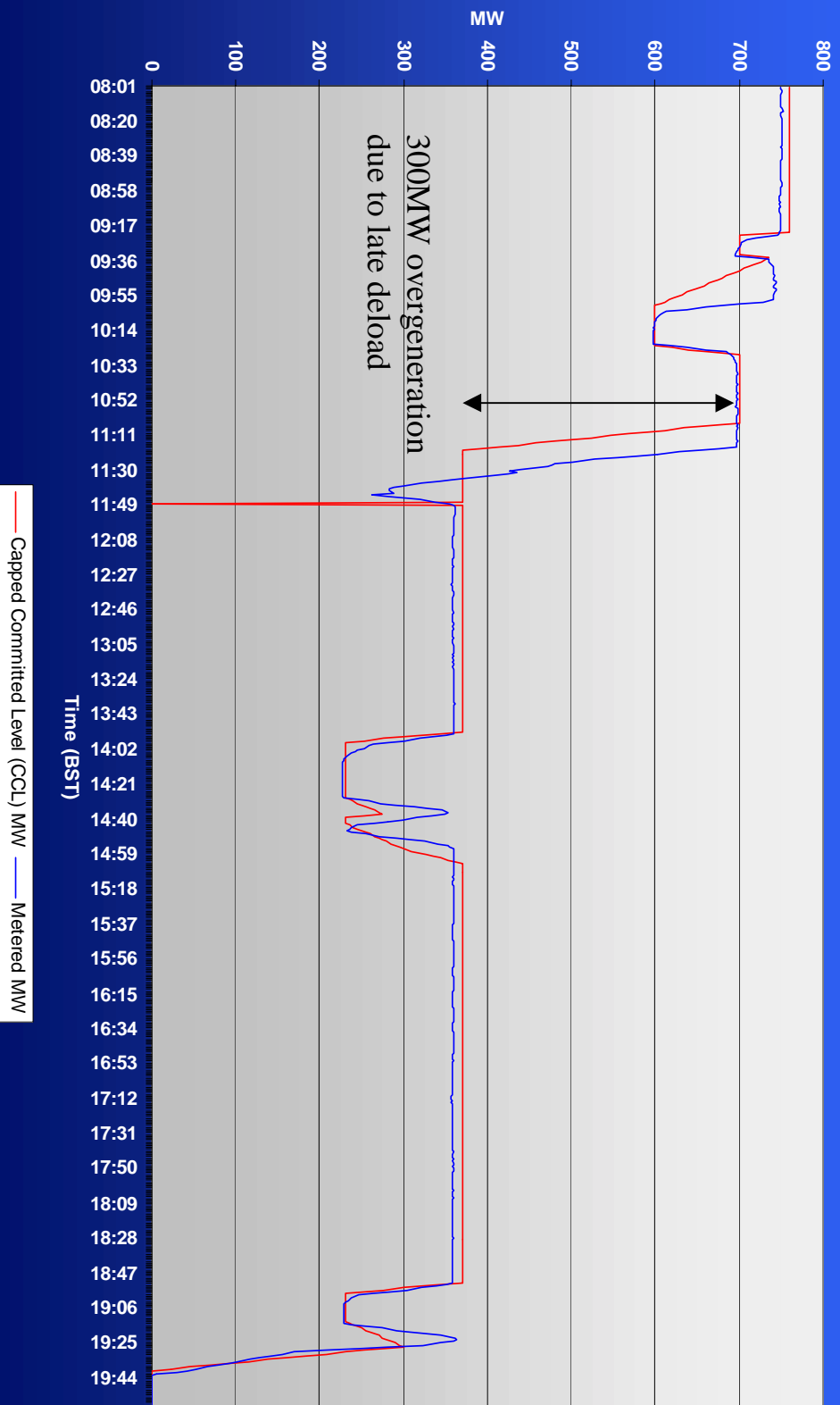


— Capped Committed Level (CCL) MW — Metered MW

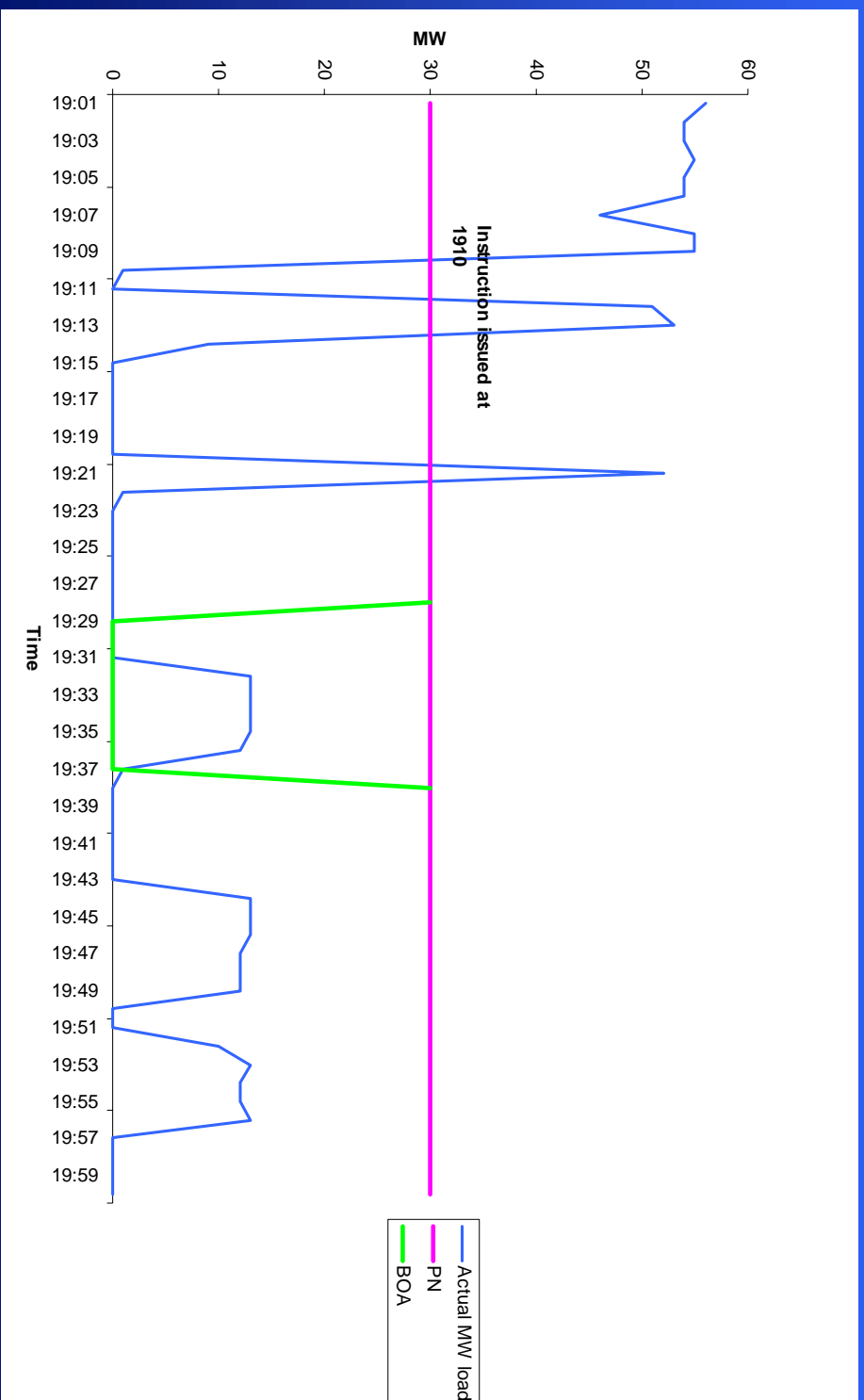


National Grid

Another missed de-load point



Demand BMU performance



Policy towards poor PN following

- ◆ Deviations from PN profile are not permitted by the Grid Code
- ◆ Still a number of clear examples since last Forum
- ◆ If NGC aware of any significant deviations including self balancing, Control staff will insist that all BMUs remain at their PN levels (MEL redec for shortfall)
- ◆ If market participant refuses, SIR requested, letter sent and logged for evidence of consistent poor performance / Grid Code breaches



Duration of BOAs

- ◆ Concern at last forum over number of short duration BOAs issued by NGC
- ◆ Analysis shows that
 - 60% of BOAs have a duration of > 30 minutes
 - 30% have a horizon of > 1 hour'
- ◆ Majority of instructions are not very short term and there is a significant amount of activity which extends out into the full balancing window.



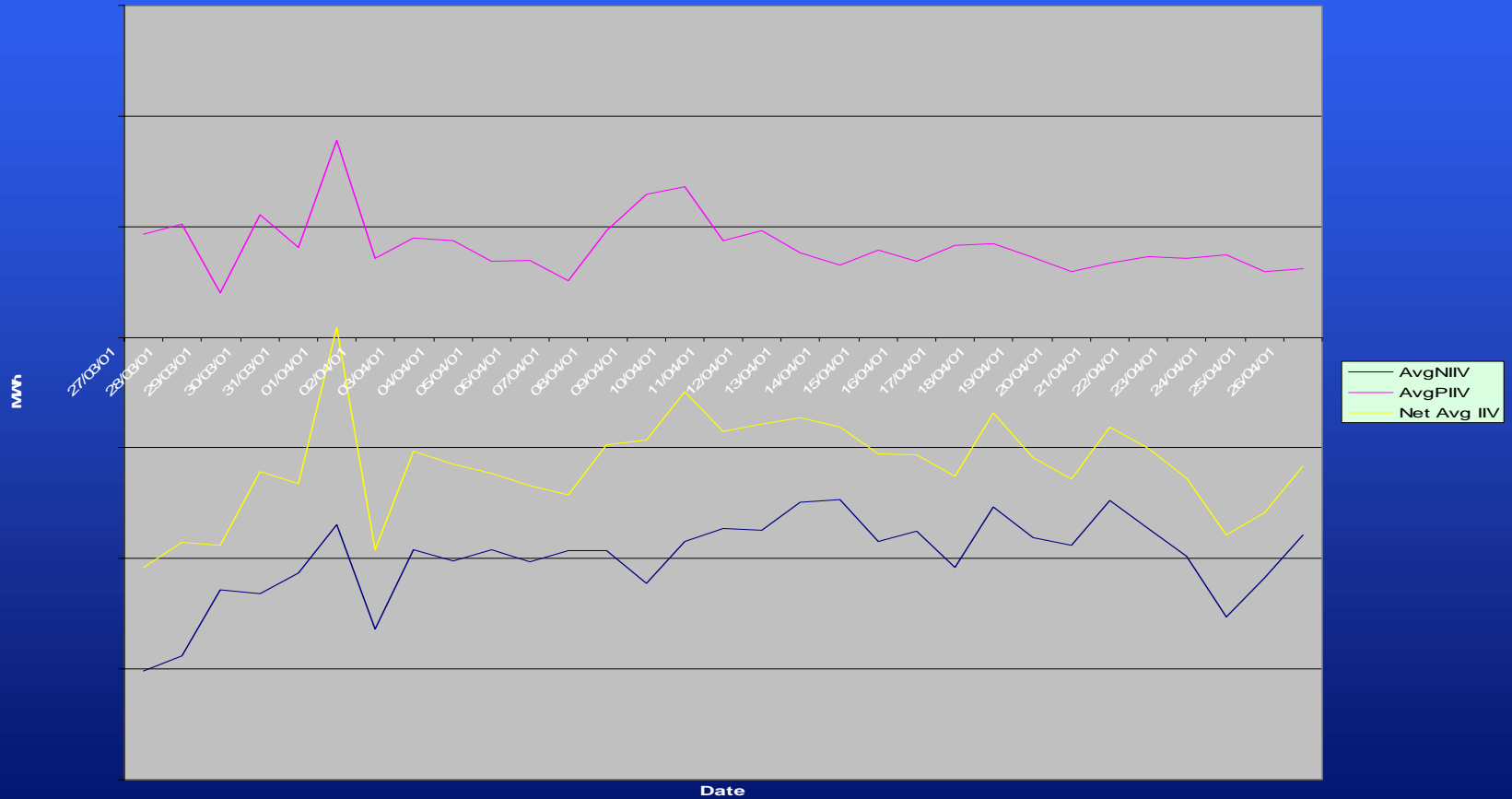
Information Imbalance

- ◆ Trend in information imbalance is not improving
- ◆ Greater information imbalance means more expensive balancing actions required and affects system prices



Average Daily Imbalance

Imbalance volumes since Go-Live



Summary

- ◆ BMU self despatch performance under NETA so far is continuing to be reasonable
- ◆ Some PN following issues now resolved - but still a number of cases of poor PN performance
- ◆ NGC keen to reduce impact of remaining areas to benefit system balancing and market prices
- ◆ Win / Win for NGC and Market Participants

