

Winter 2008/09 Review

Nolan Robertson

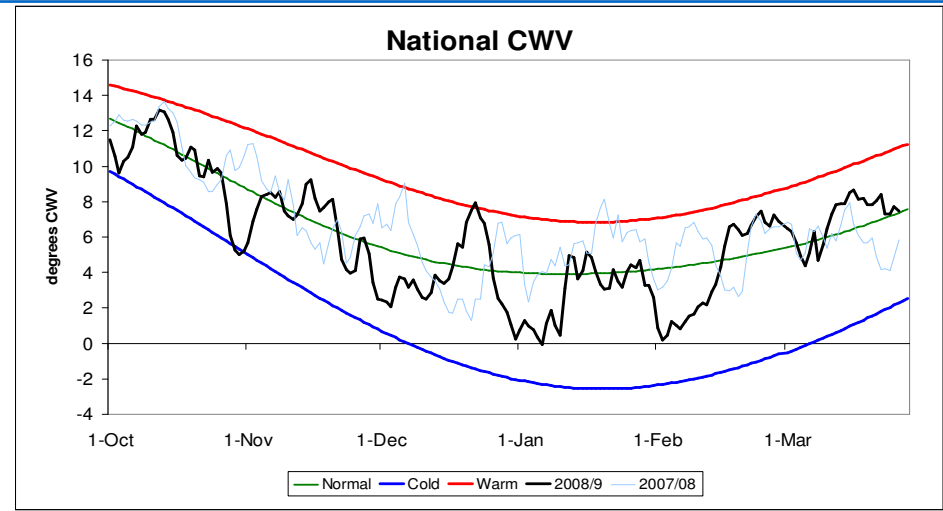
nationalgrid

The power of action.™

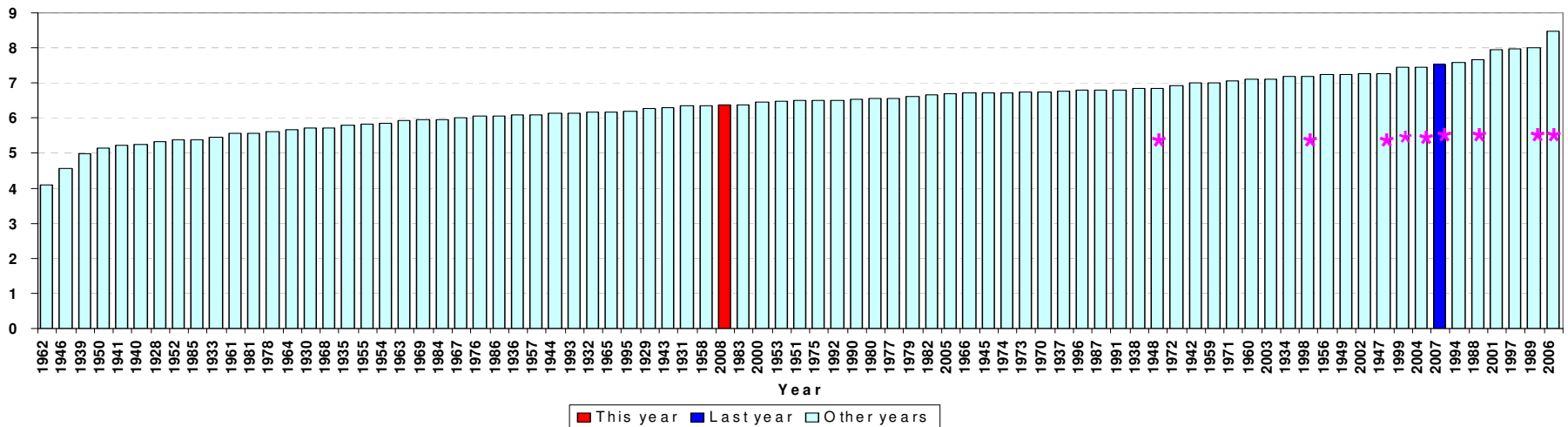
Winter 2008/09 weather

The winter from October 2008 to March 2009 was average compared to the 81 year weather history but colder than the 17-year seasonal normal.

The coldest day, on January 6th, was 1 in 4 warm, when compared to the coldest days in the last 81 years.

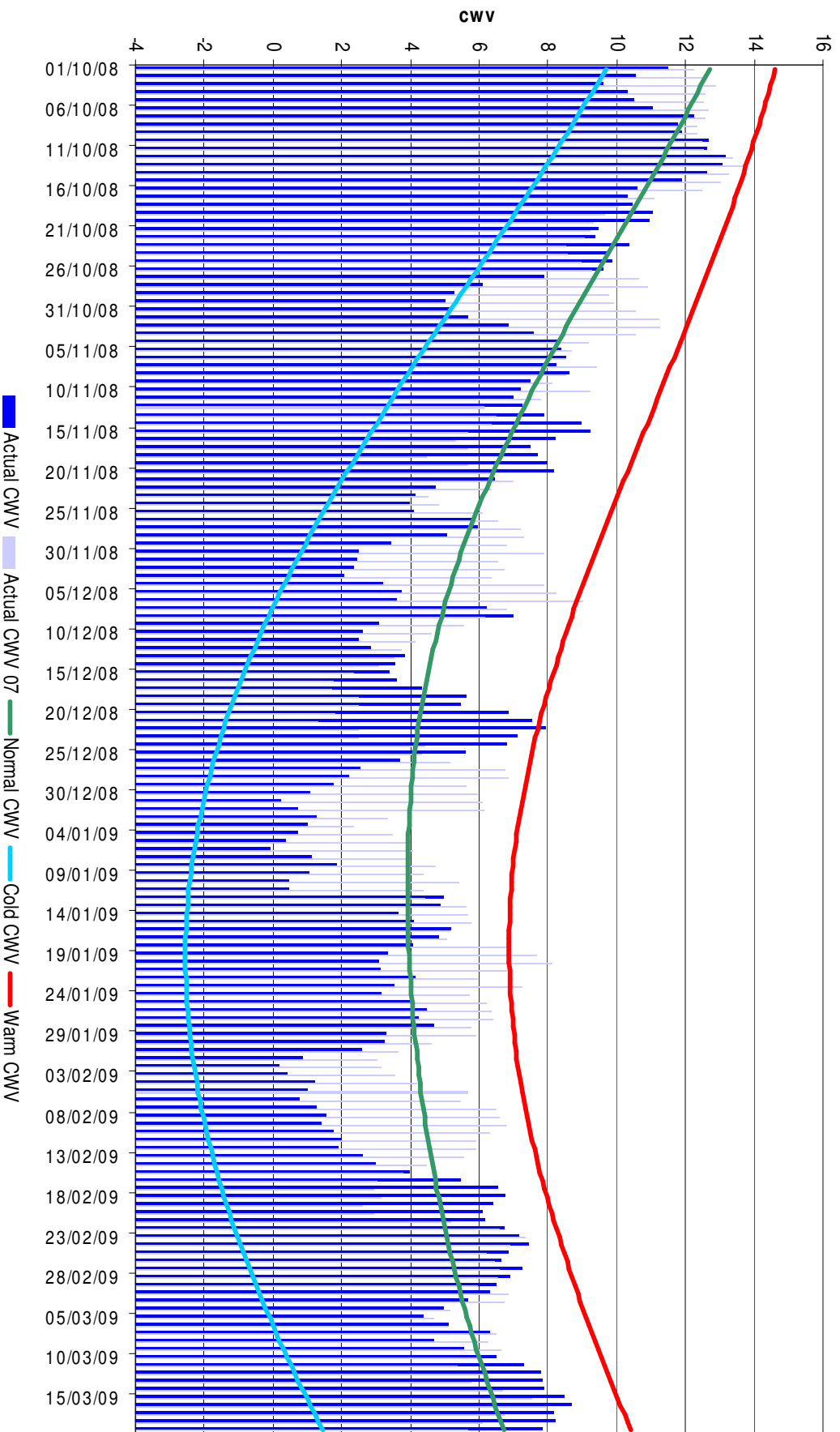


Mean National Temperature for October to March

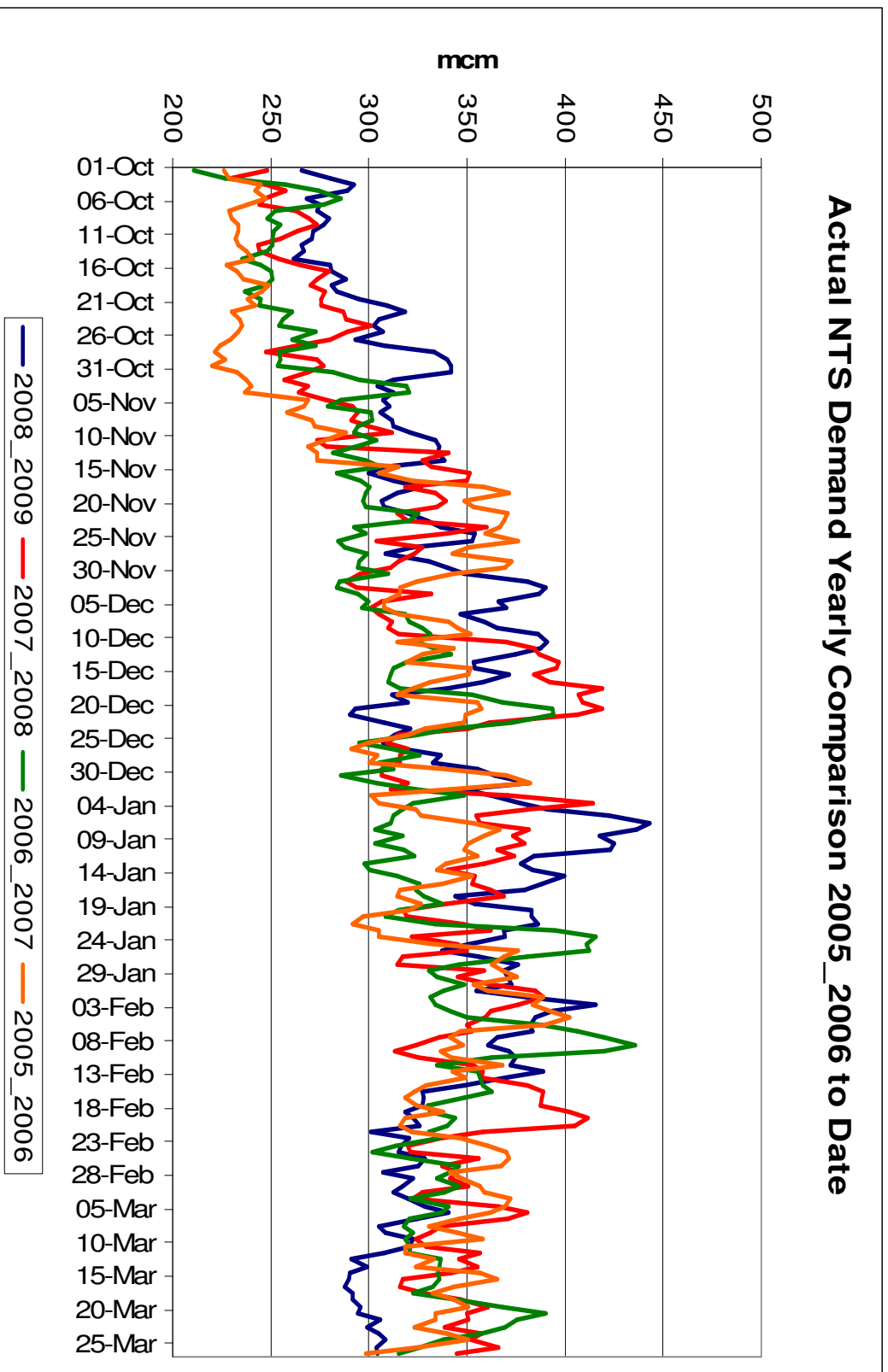


Composite Weather Variables

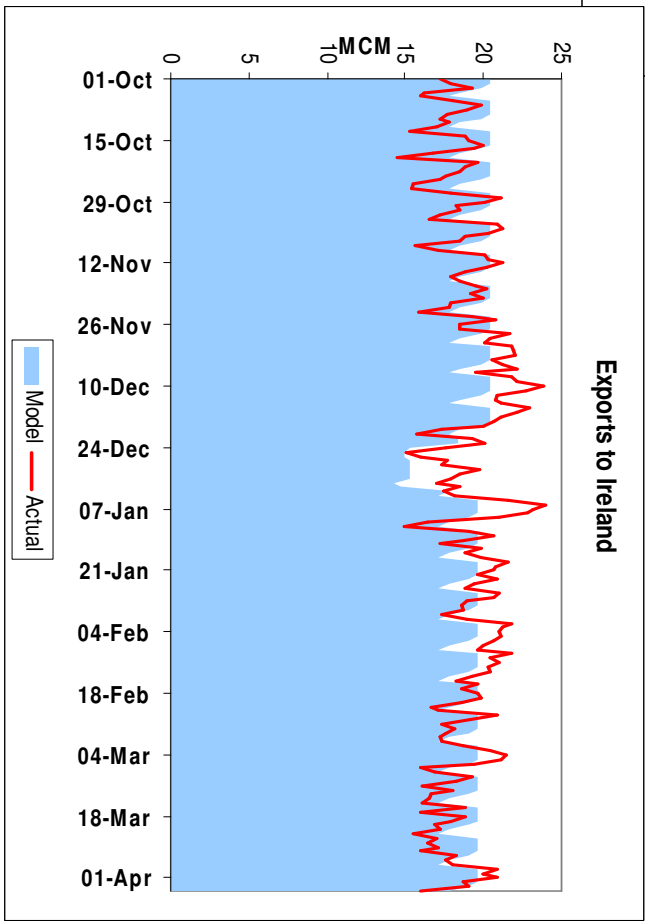
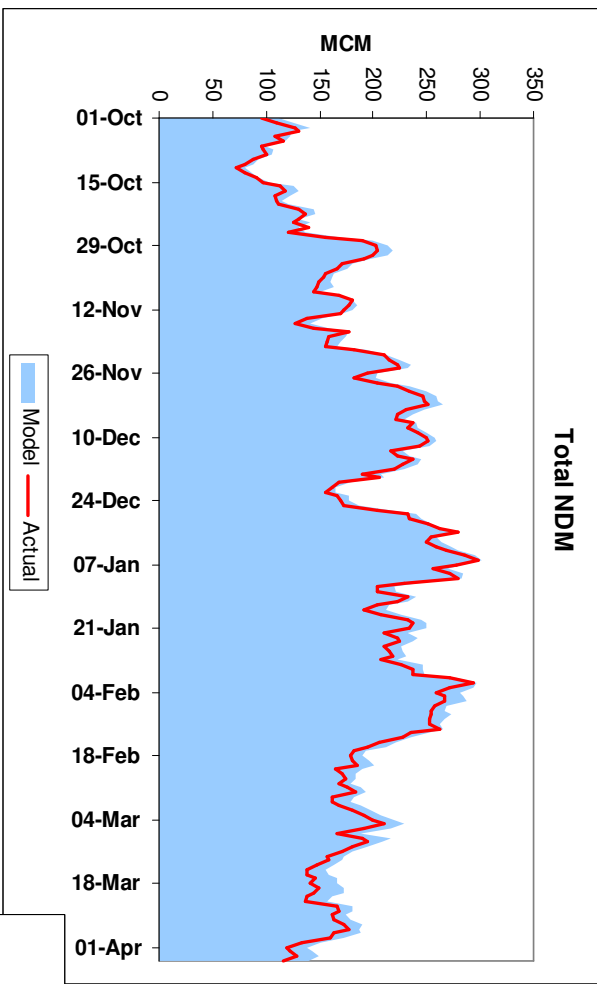
From 01-October-2008 to 19-March-2009



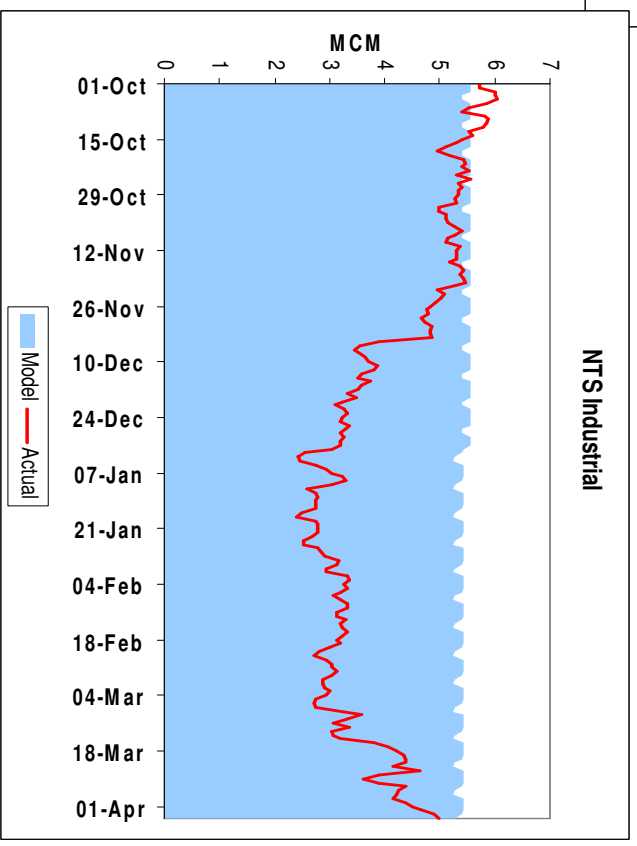
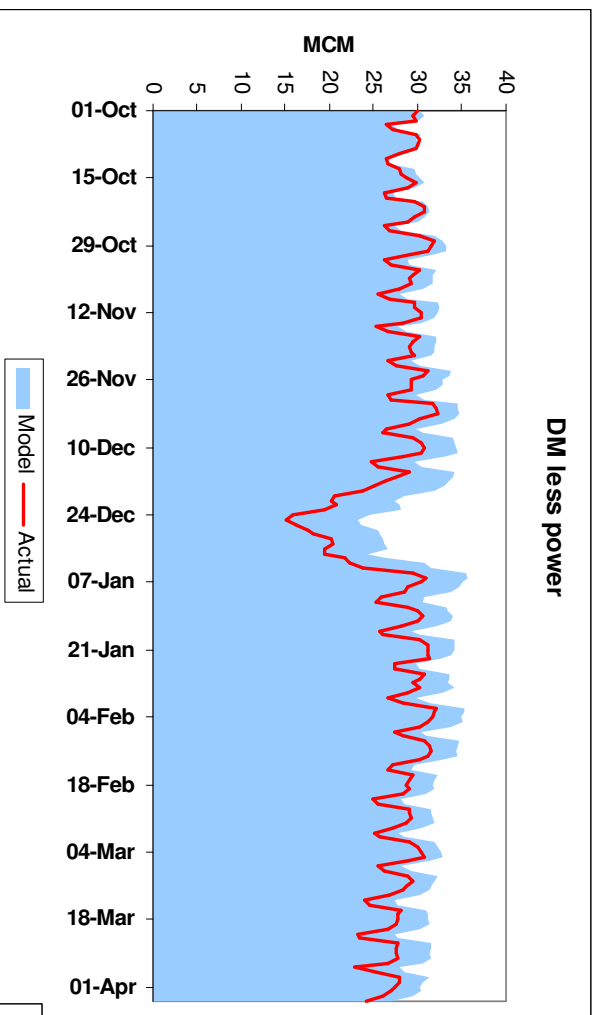
Demand Comparison



NTS Gas Demand

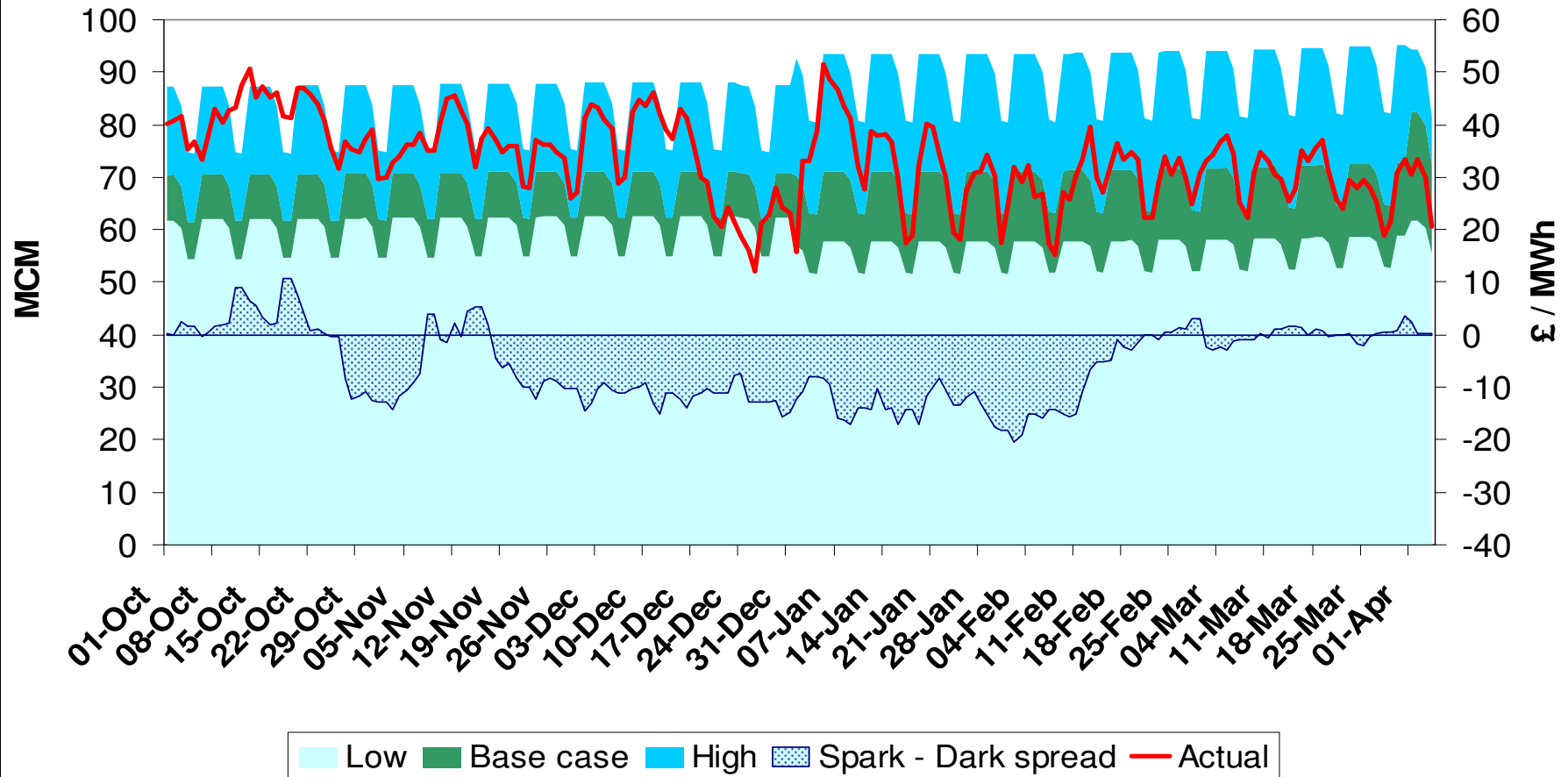


NTS Gas Demand



Gas For Power Demand

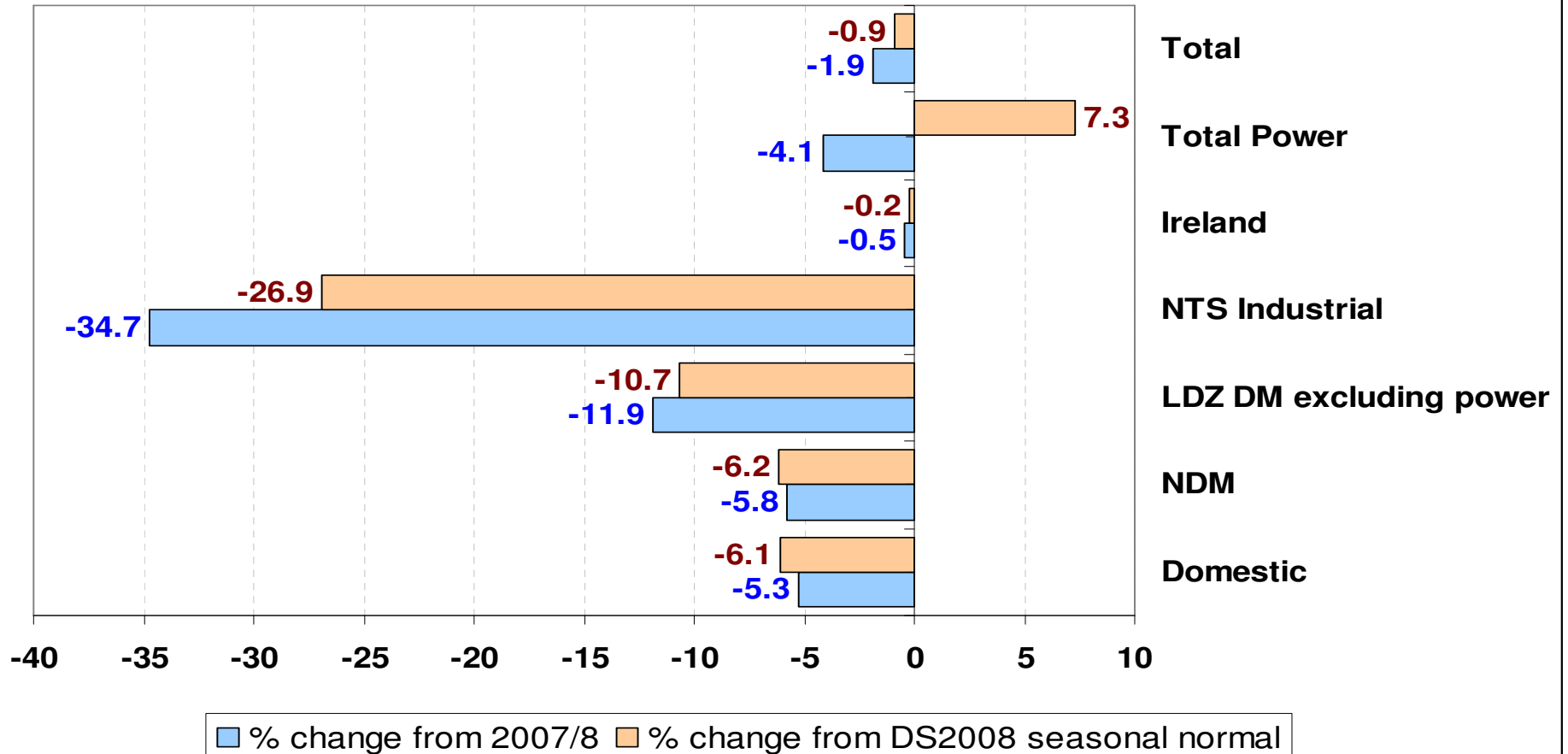
Power Generation



Weather Corrected Gas Demand

Winter 08/09

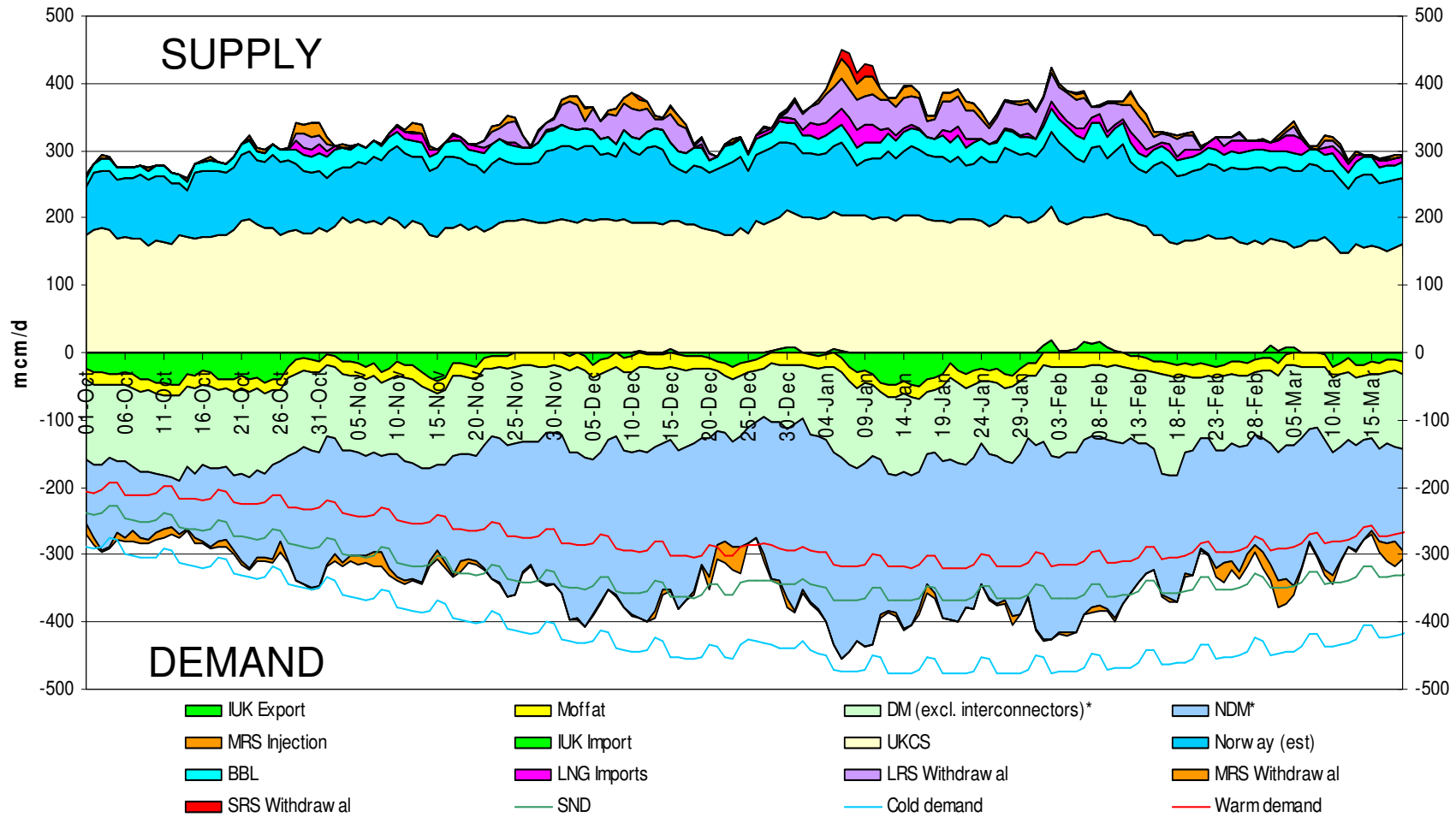
Percentage change in weather corrected demand



October 1st 2007 to March 30th 2008 compared to October 2008 to March 31st 2009 to compare equal number of days because 2008 was a leap year

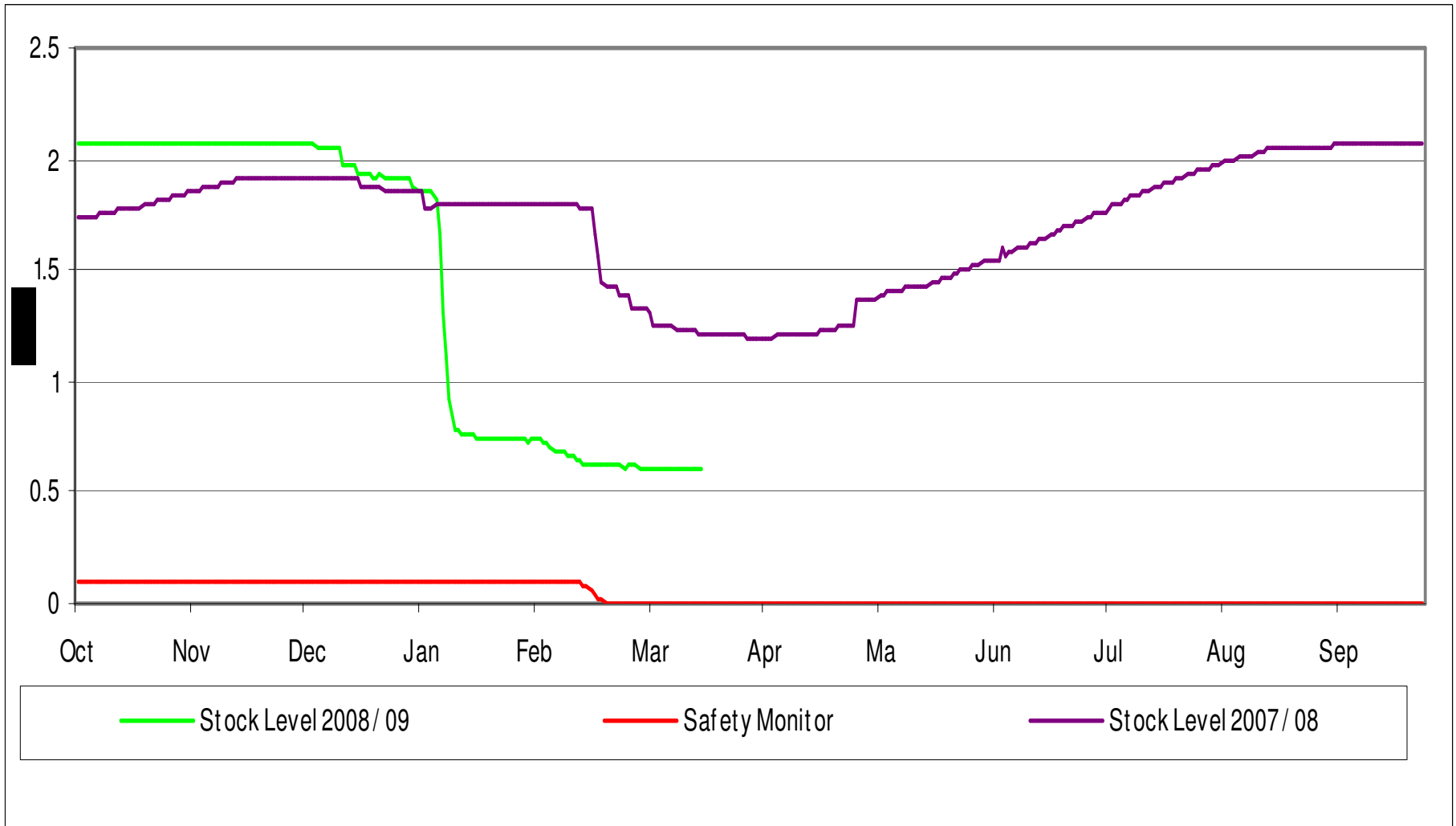
Gas Demand and Supply Breakdown

From 01-October-2008 to 19-March-2009



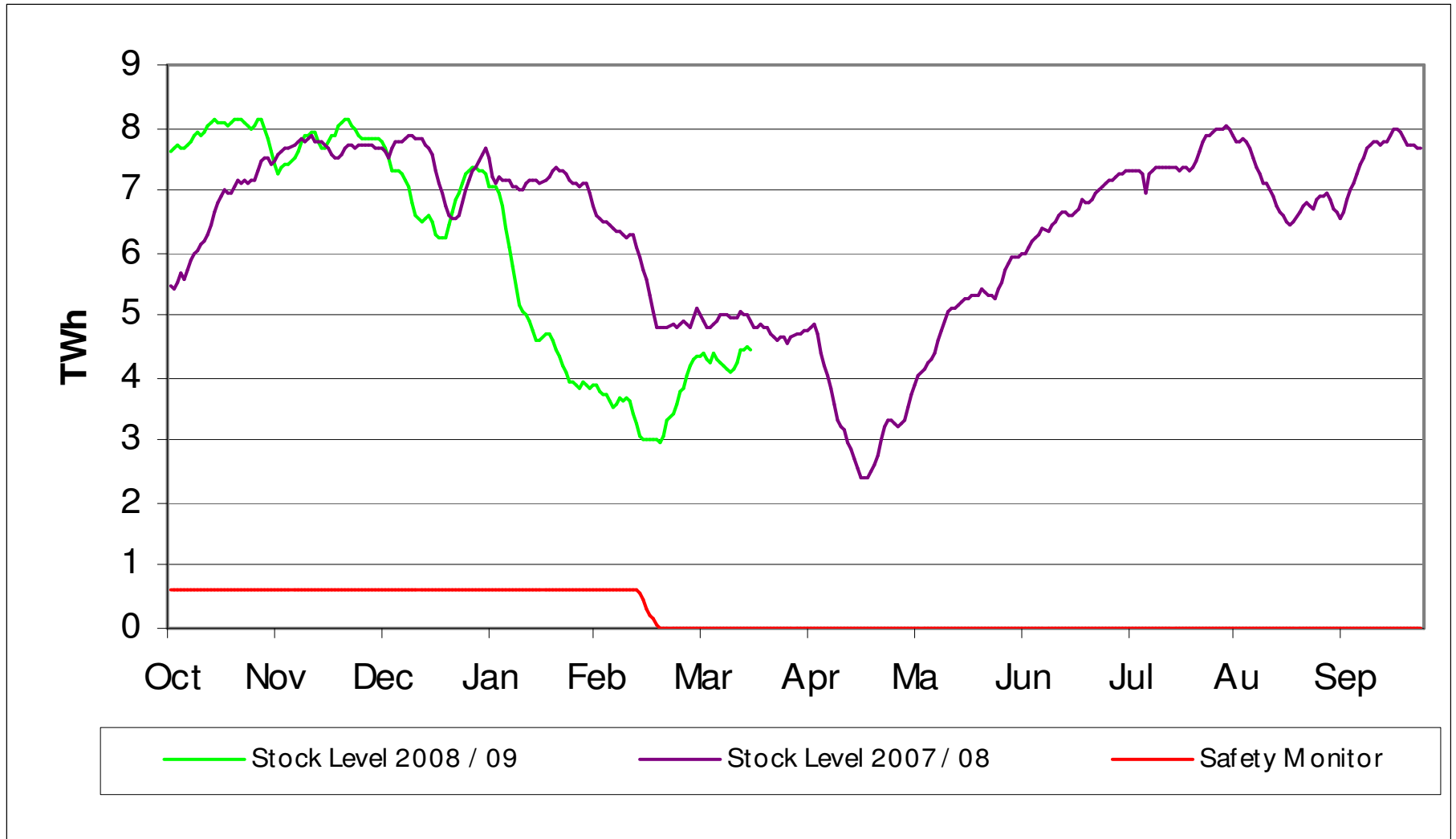
SRS Stocks

October 2008 to March 2009



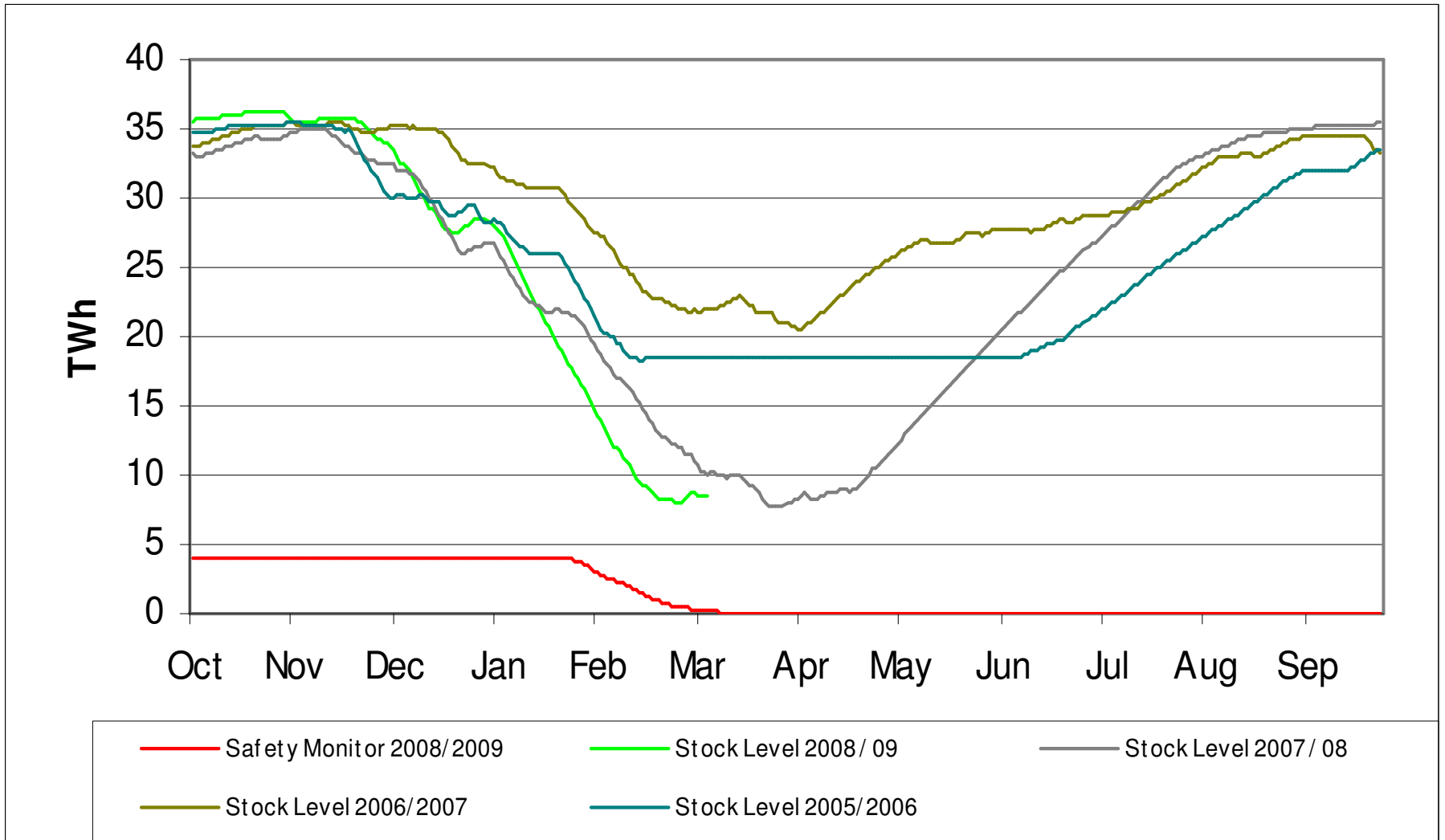
MRS Stocks

October 2008 to March 2009



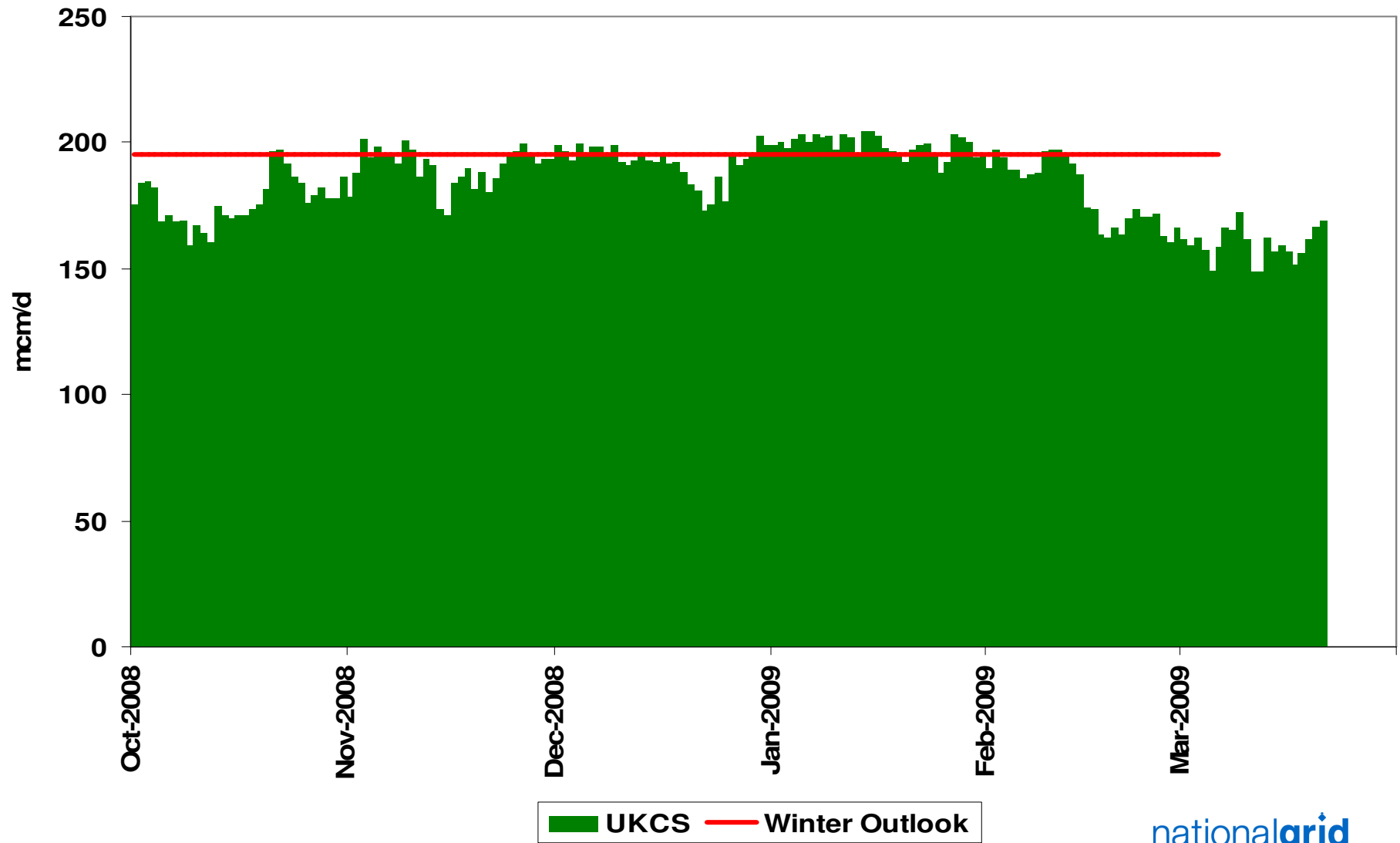
Long Range Storage Stocks

2005/2006 to Date



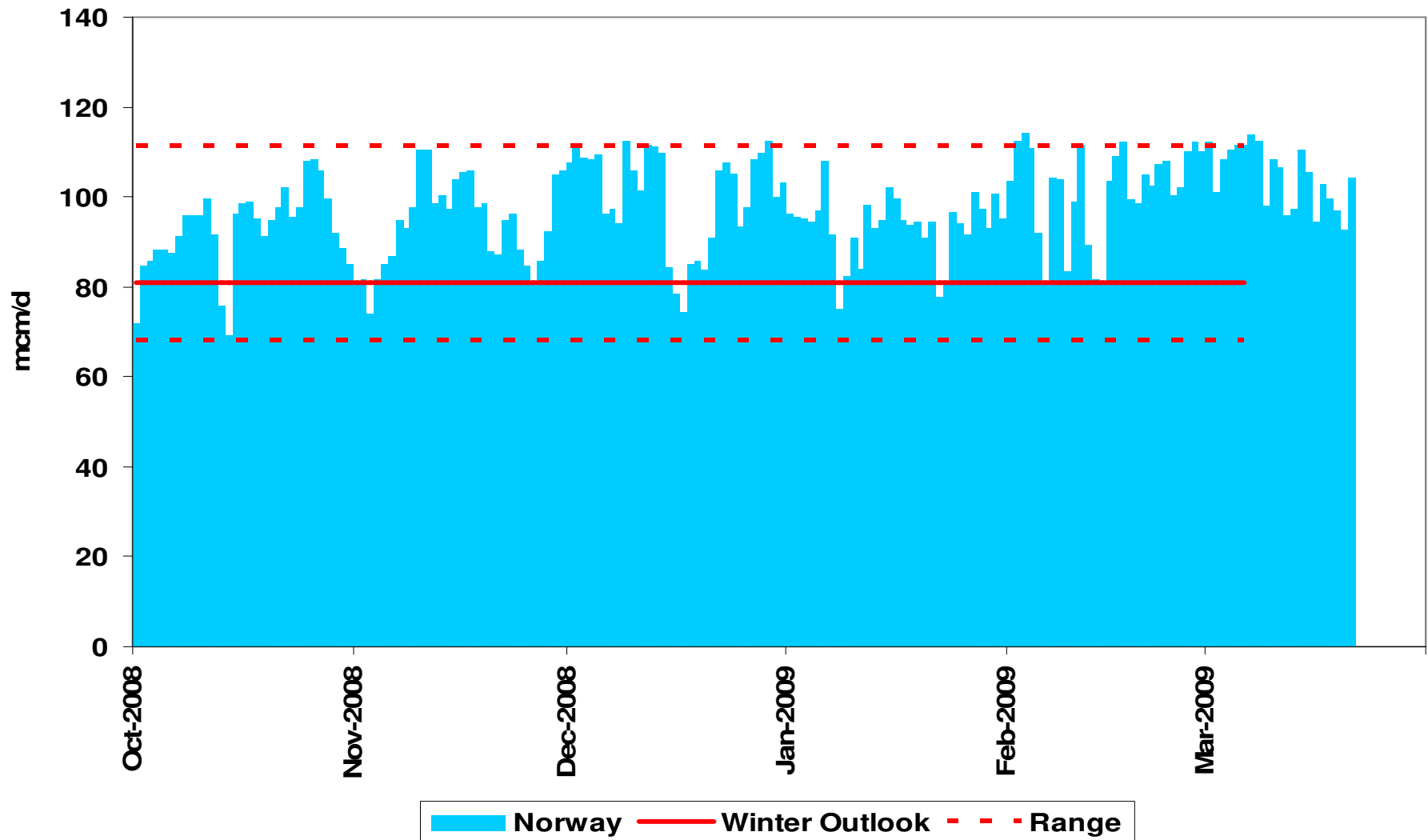
UKCS

October 2008 to March 2009



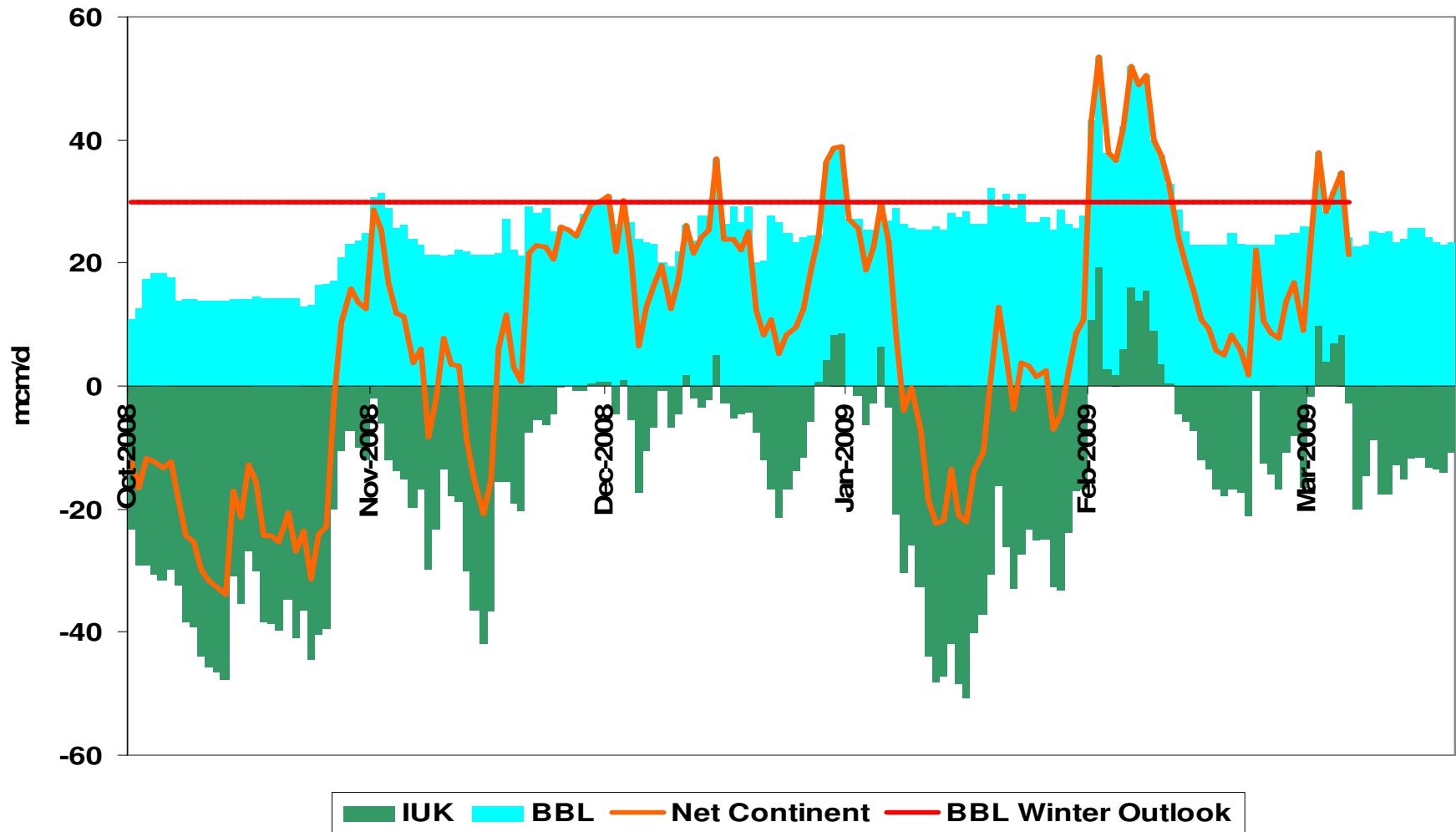
Norway

October 2008 to March 2009



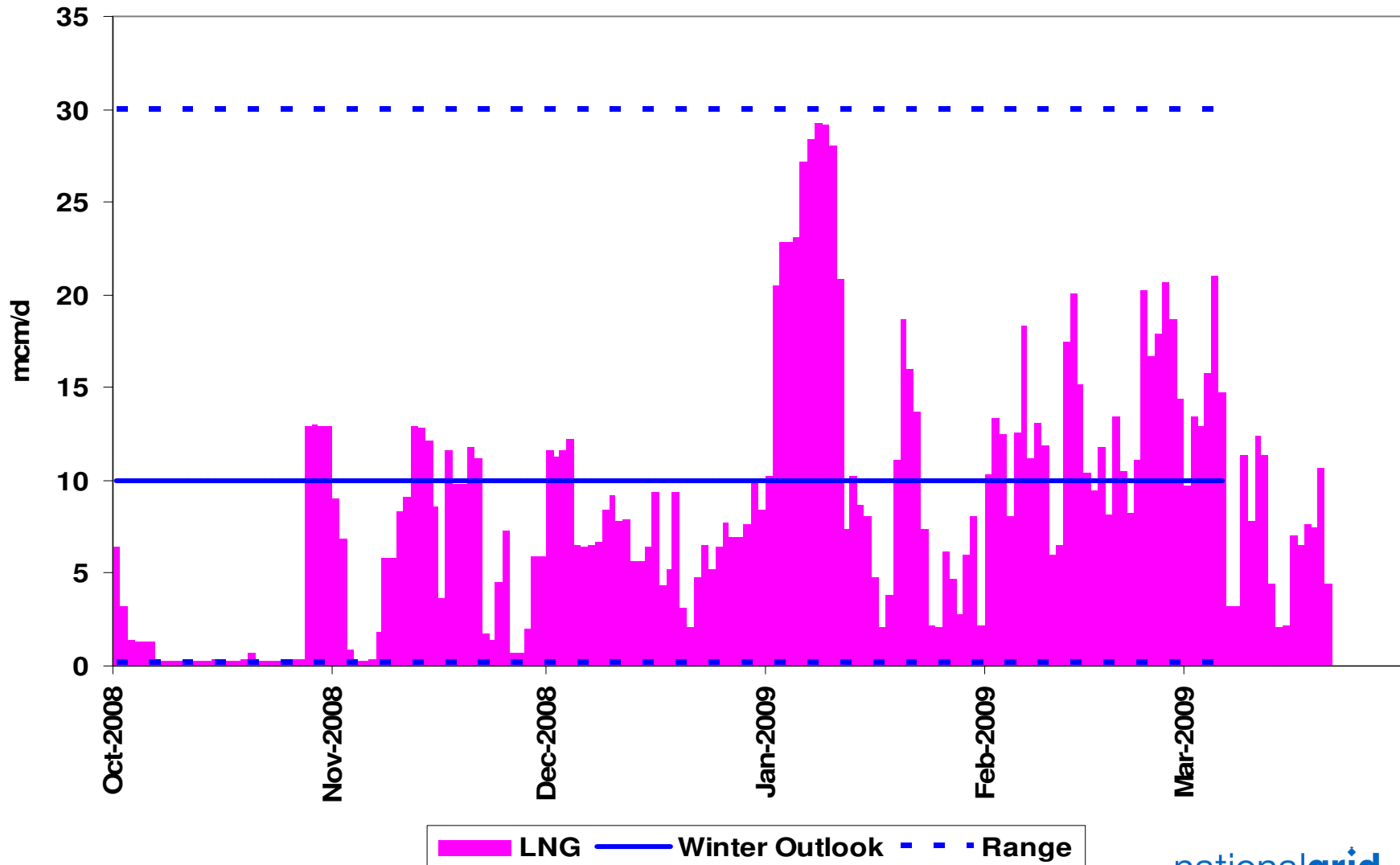
Interconnectors

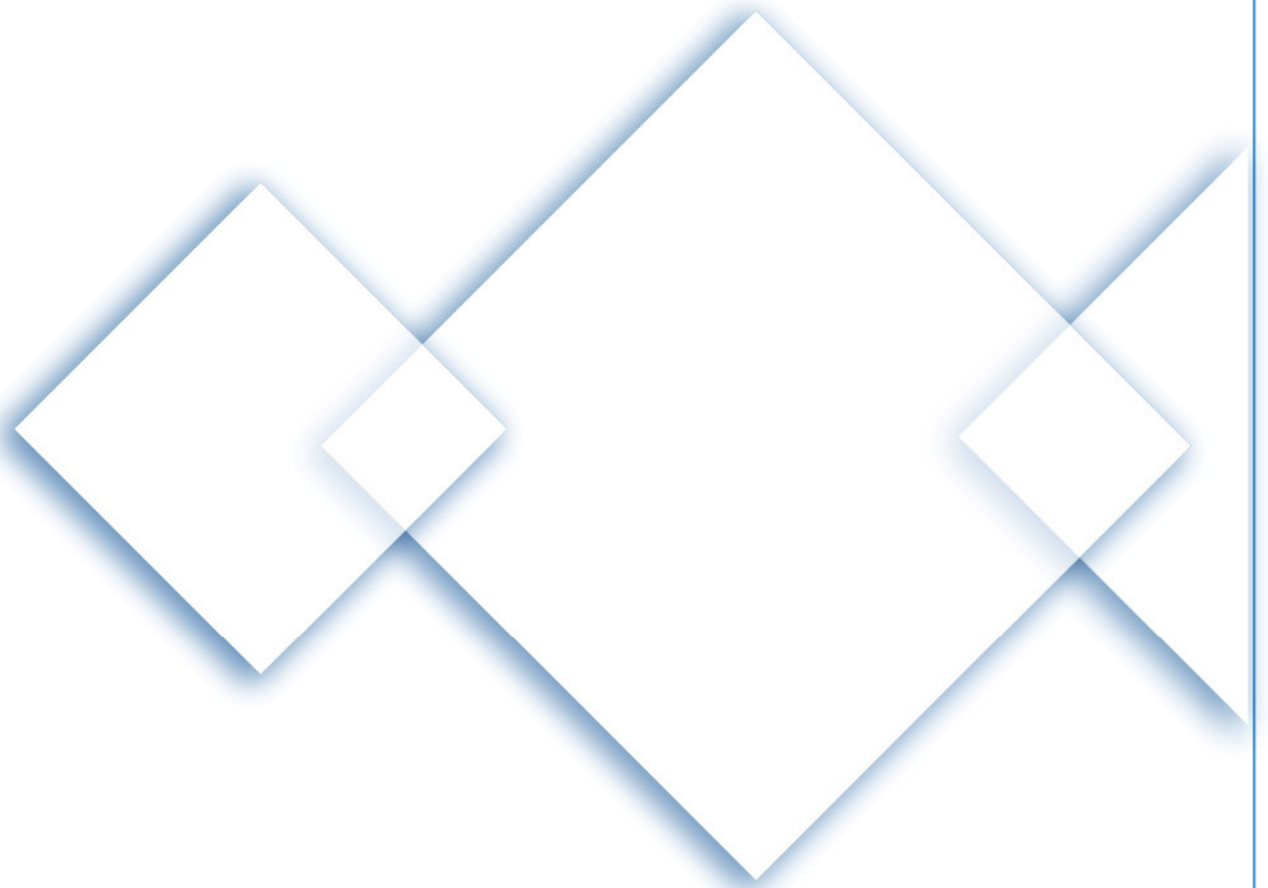
October 2008 – March 2009



LNG Imports (Grain)

October 2008 to March 2009





Winter 2008/2009 Review

Further Questions?

nationalgrid

The power of action.™