

# Operational Performance - Update

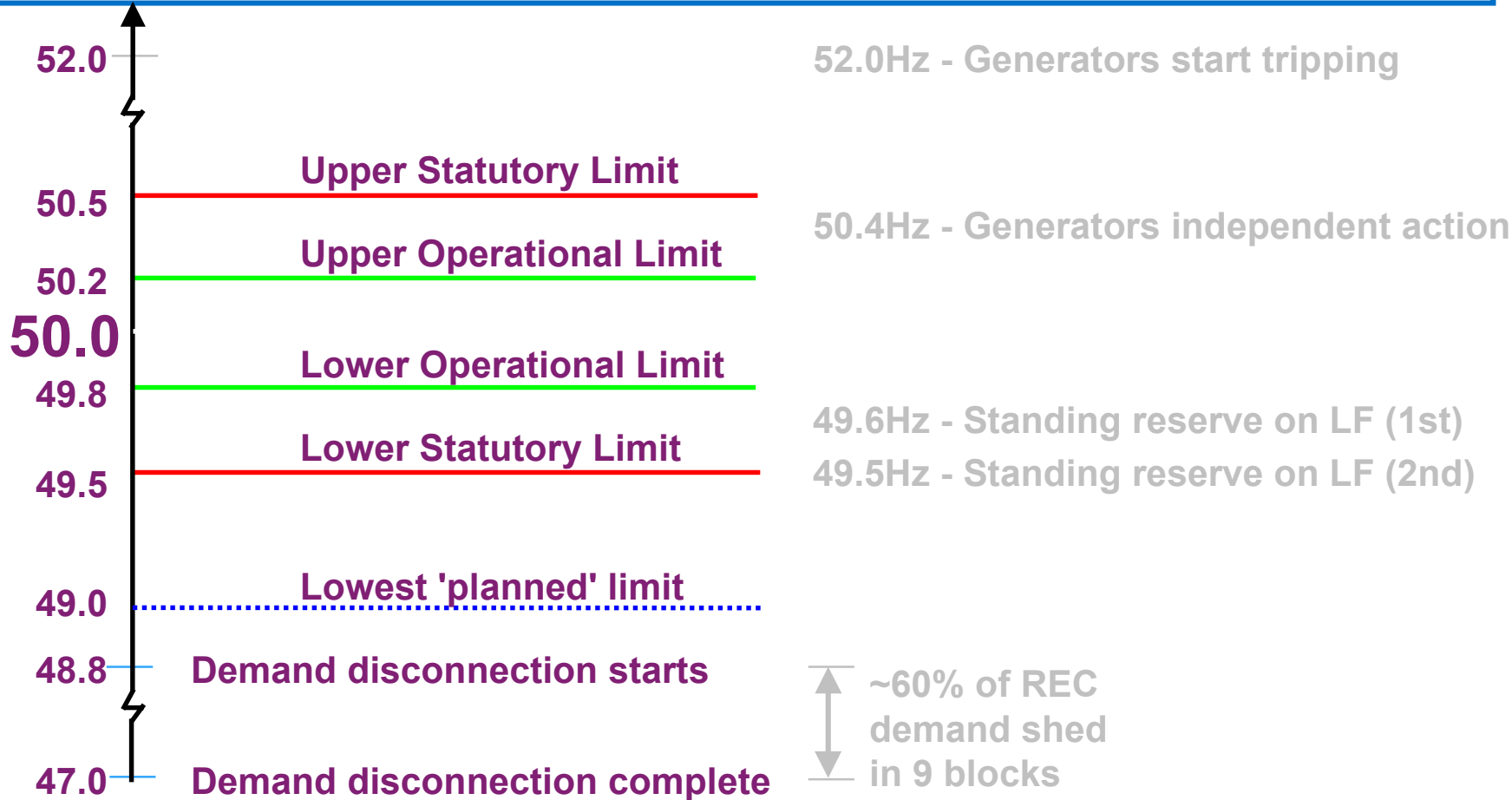
Richard Price

Operations and Trading

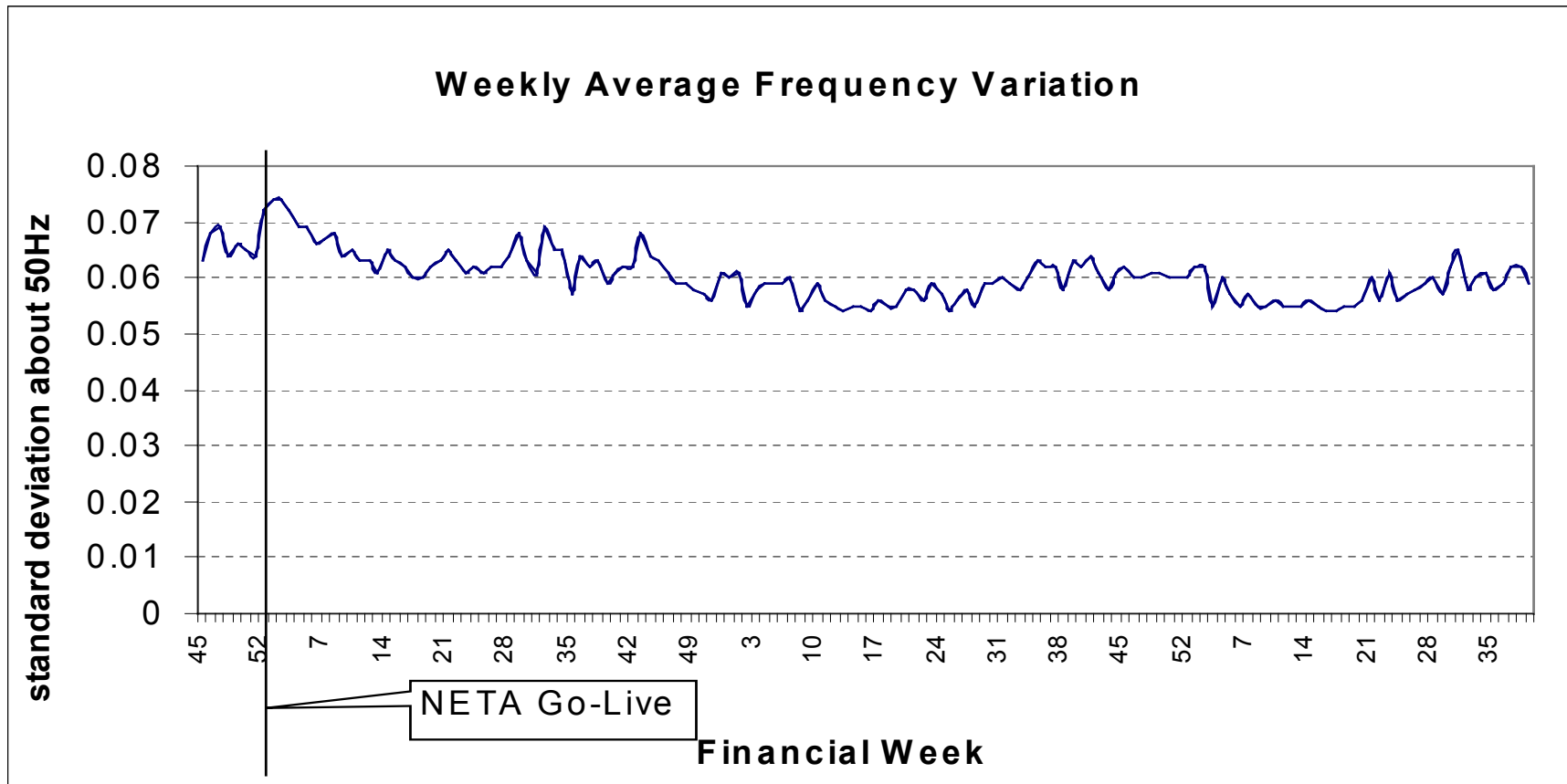
# Agenda

- Operational Performance - update
- Data Accuracy - update

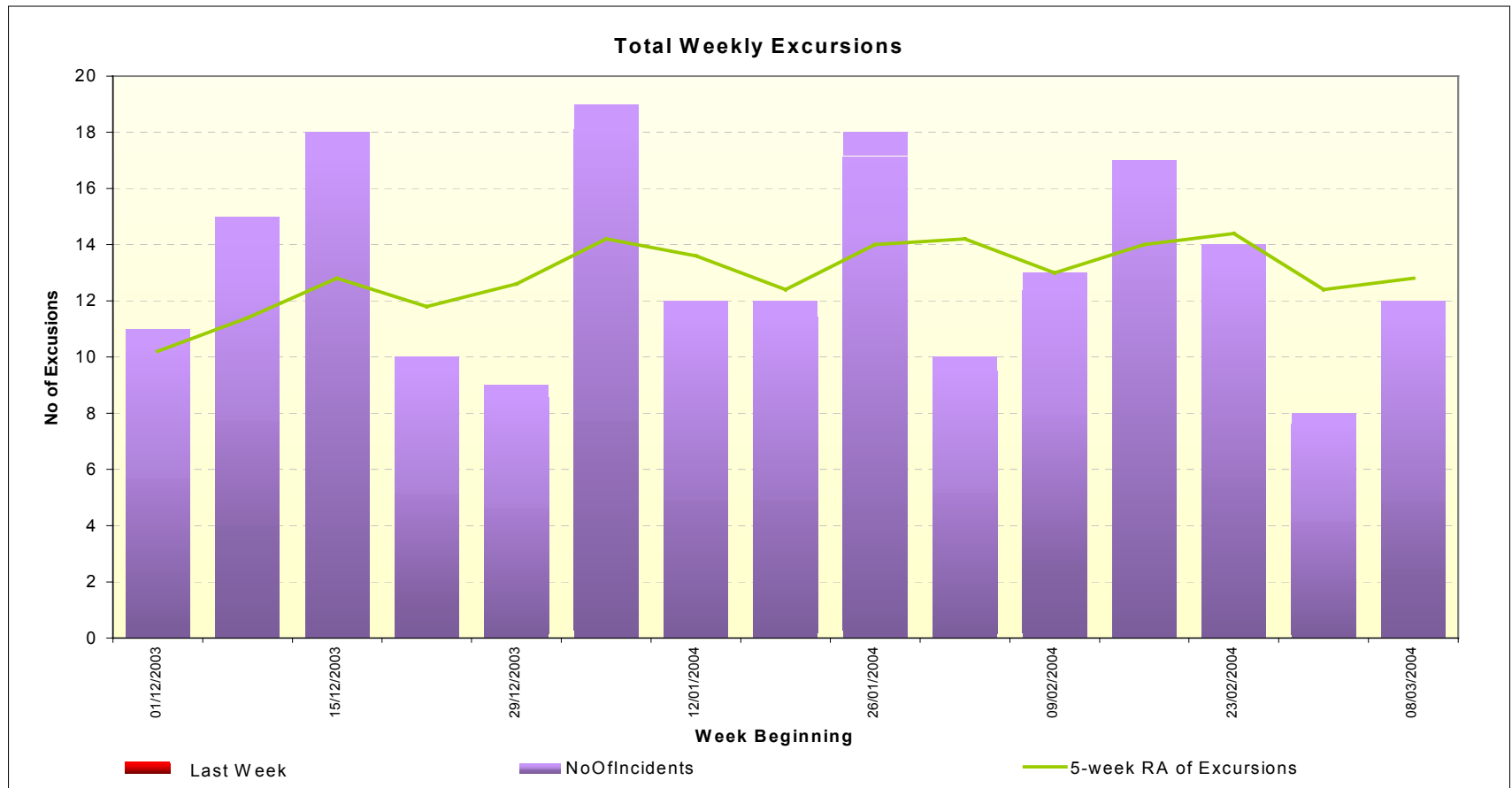
# Frequency Limits



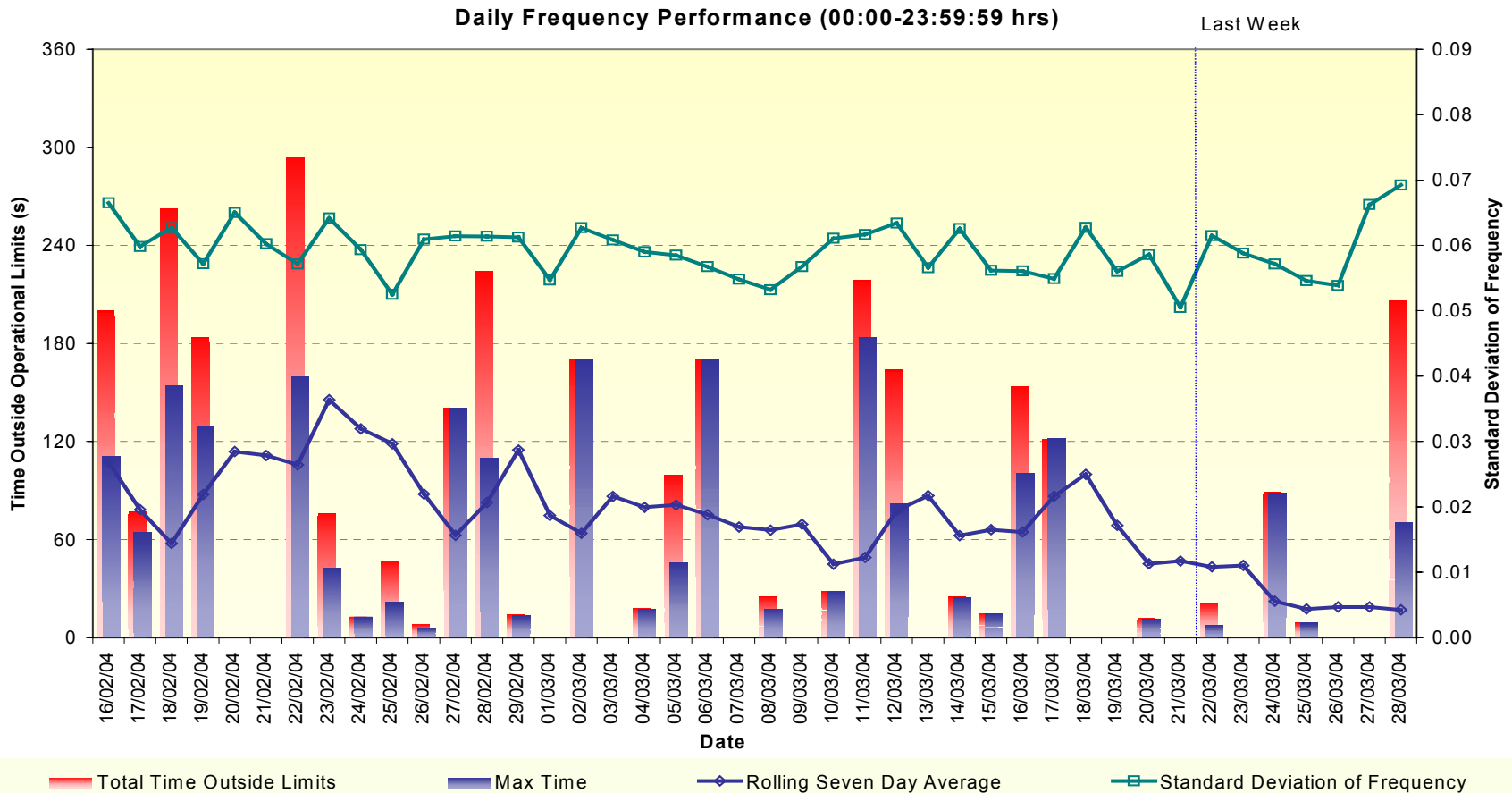
# Weekly Average Frequency Variation since NETA Go-live



# Weekly excursions since February 2004



# Daily Frequency Performance



# System warnings

- NISMs issued on two days - Wed 10 & Thu 11 March 2004
  - for both days, the period covered was the Darkness Peak 18:00-20:00
- Previous NISM was 27 Dec 2003
- Prior to that 11 Aug 2003, i.e. only 3 over the past 6 months

# Data Accuracy Update

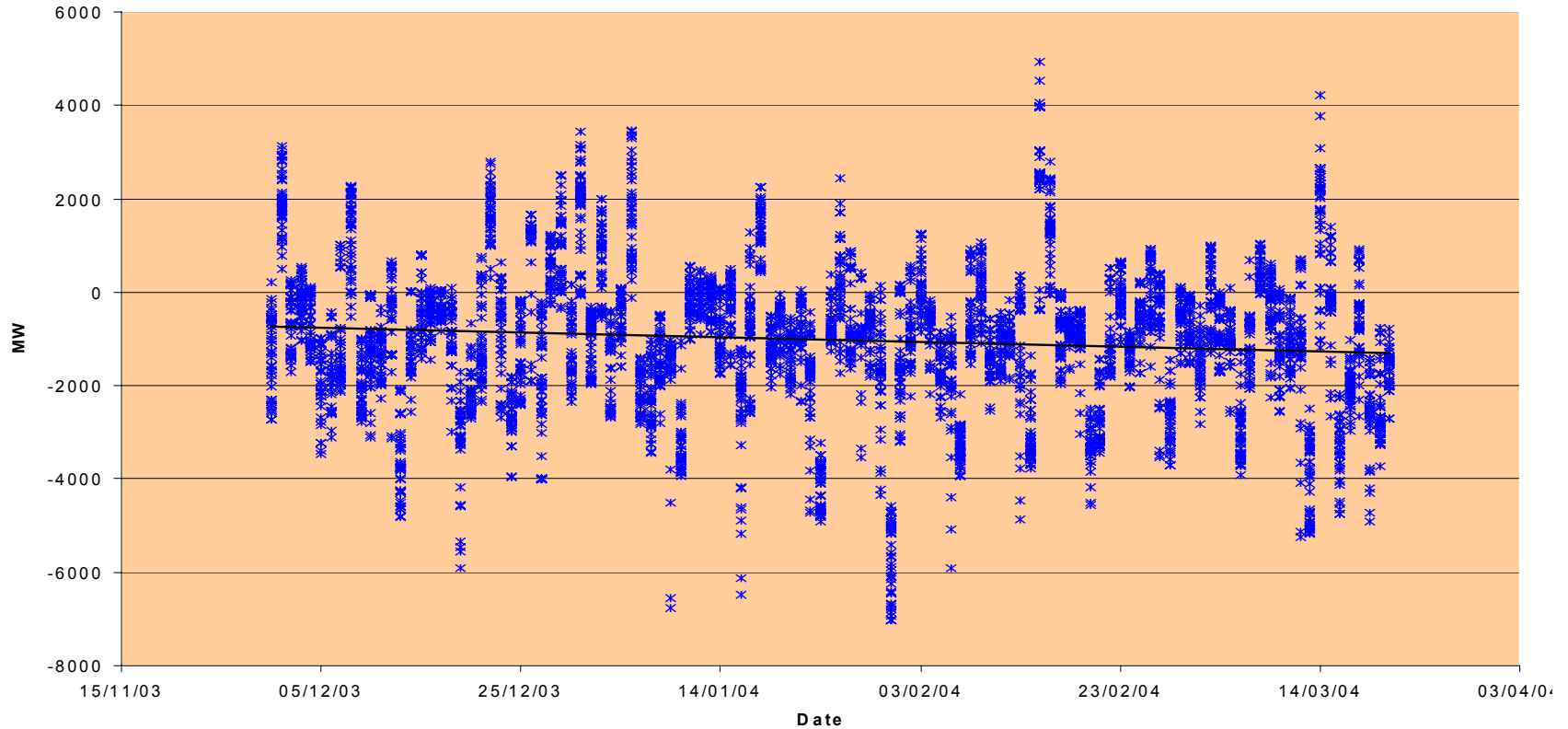
- At the February Forum, we drew attention to poor PN/MEL data accuracy from day ahead
- We recognise that IPN is only a best estimate and may change due to trading within day, however .....
- There was still a consistent pattern of under / oversubmission e.g. Friday-Saturday or Sunday-Monday
- Defaulting will fill in any gaps from 05:00 D+1 to 05:00 D+2 with the current schedule day's data
- We asked participants to look at their processes to see if there was scope for improvement in the accuracy of data from day ahead onwards, and more prompt re-submission following changes to their position
- Can impact on balancing costs, cashout prices and industry confidence in published data (BMRS) and market mechanisms

# Changes over the past two months

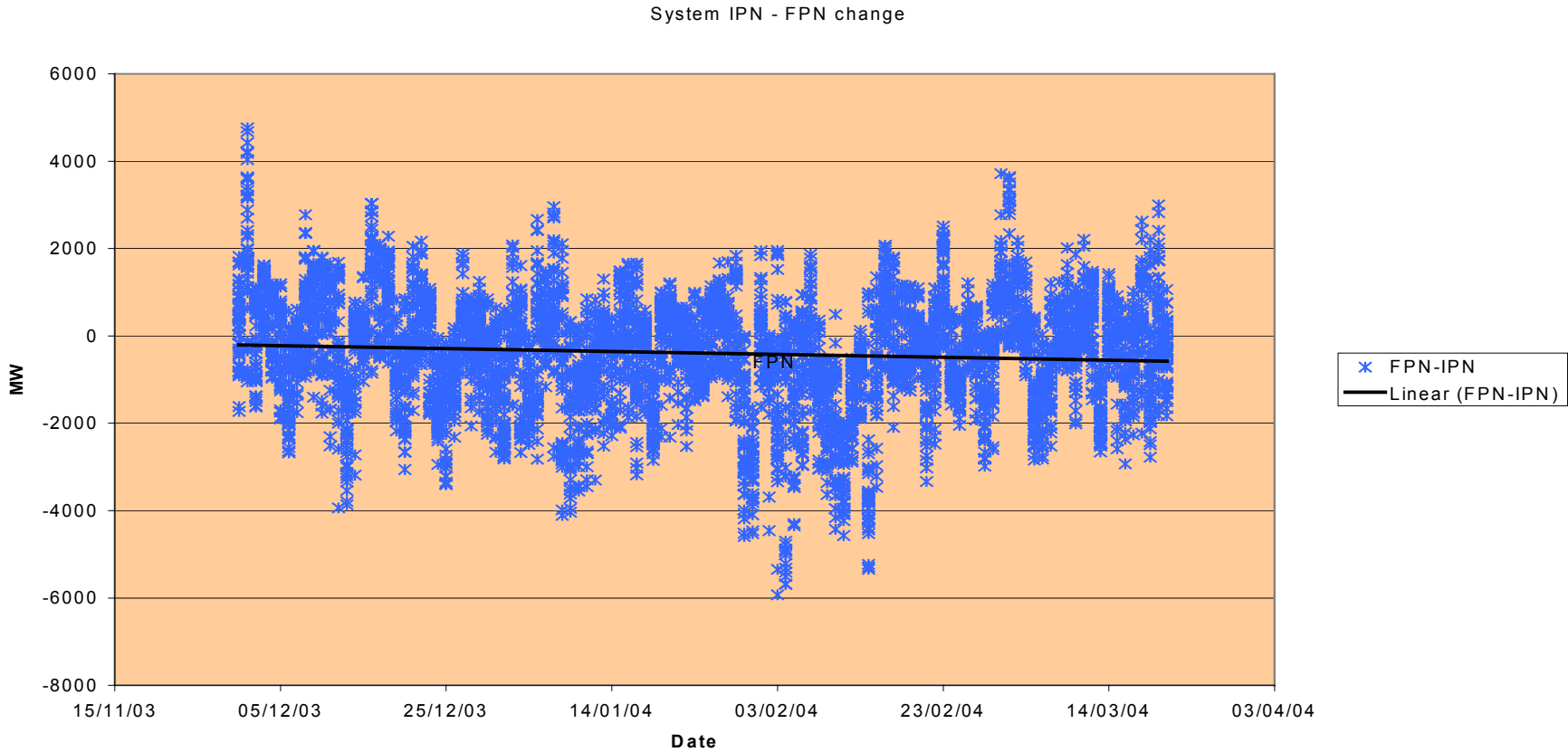
- Little obvious improvement in MEL and PN accuracy at a system level from day ahead.
- There are still two companies that are particularly poor at prompt redeclaration of MEL/PN especially between day ahead and shorter lead times.
- Discrepancies are still due to late updates of submissions.
- Friday to Saturday and Sunday to Monday defaulting effect seems to be similar over Feb/Mar compared with Nov/Dec/Jan.
- With regular prompting, the accuracy is tolerable, without prompting, we are forced to undertake a significant amount of “ringing around” to verify the submitted data and encourage re-submission.
- Participants are generally very helpful when specifically contacted to query data - but we do not want to have to keep chasing on a regular basis - highly resource intensive

# Day Ahead to Gate Closure MEL change - all periods

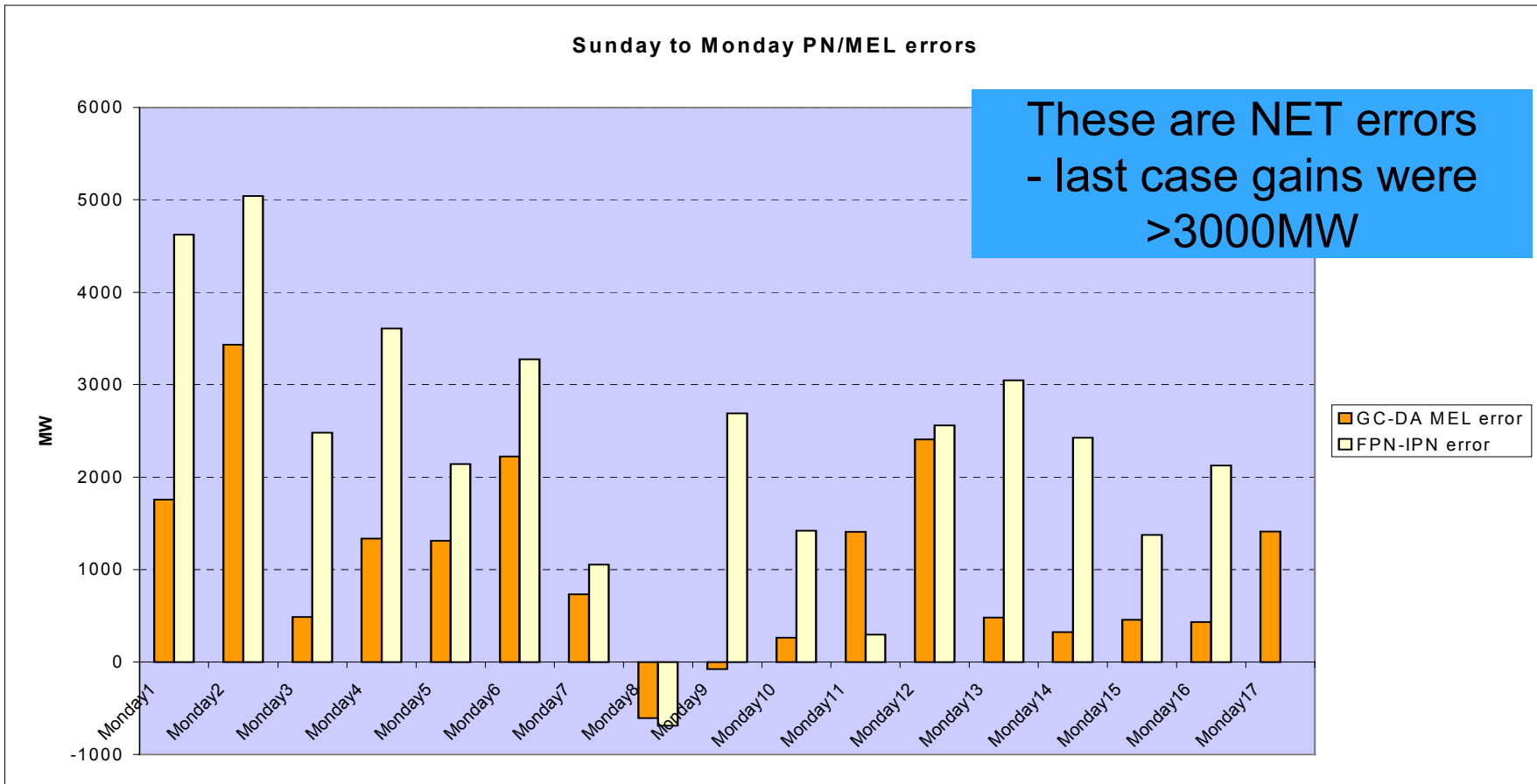
Day Ahead to Gate Closure MEL change



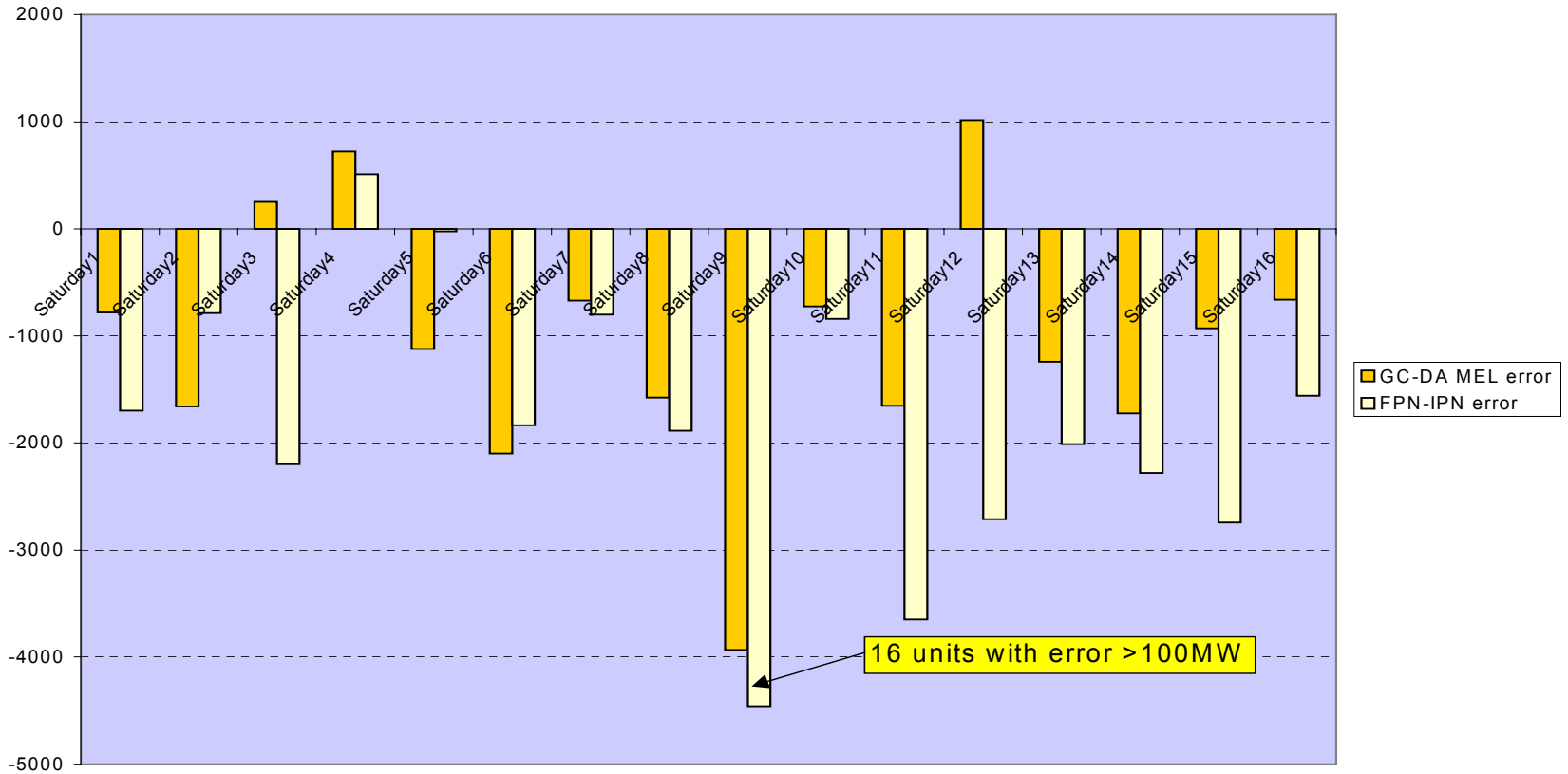
# System IPN to FPN change - all periods



# Sunday to Monday PN and MEL errors



# Friday to Saturday PN/MEL errors



# Summary

- Frequency performance / self despatch performance still good
- Data Accuracy - still considerable room for improvement
  - This item is still very much on our agenda and we are liaising closely with participants



Any questions?