

Supplier Volume Allocation

Alex Pickering

29th November 2006

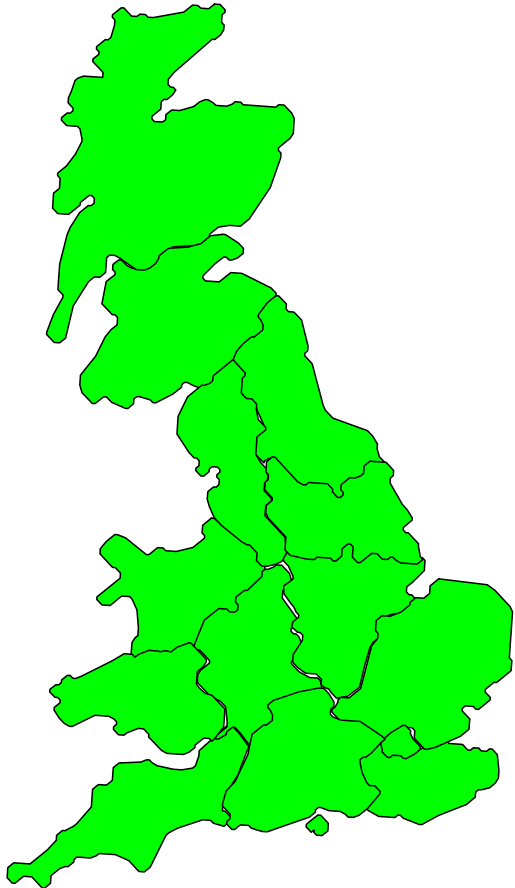
Overview

- **Grid Supply Point (GSP) Group Takes**
- **SVA consumption**
- **Group Correction Factor**
- **Supplier BM Units**

GSP Groups

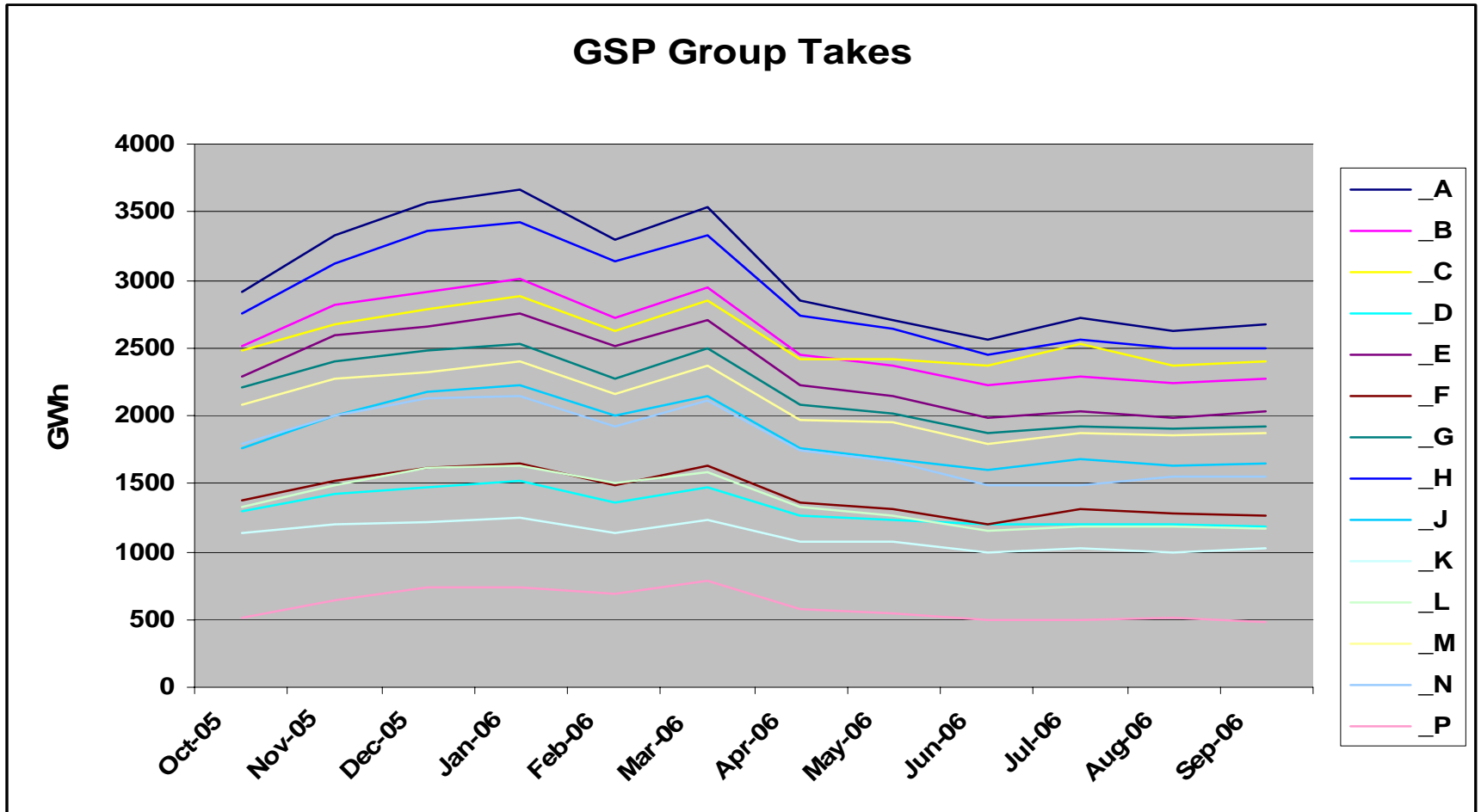
- **A Grid Supply Point is a connection from the National Grid to a distribution network**
- **Grouped together to form GSP Groups**
- **14 GSP Groups**

GSP Groups

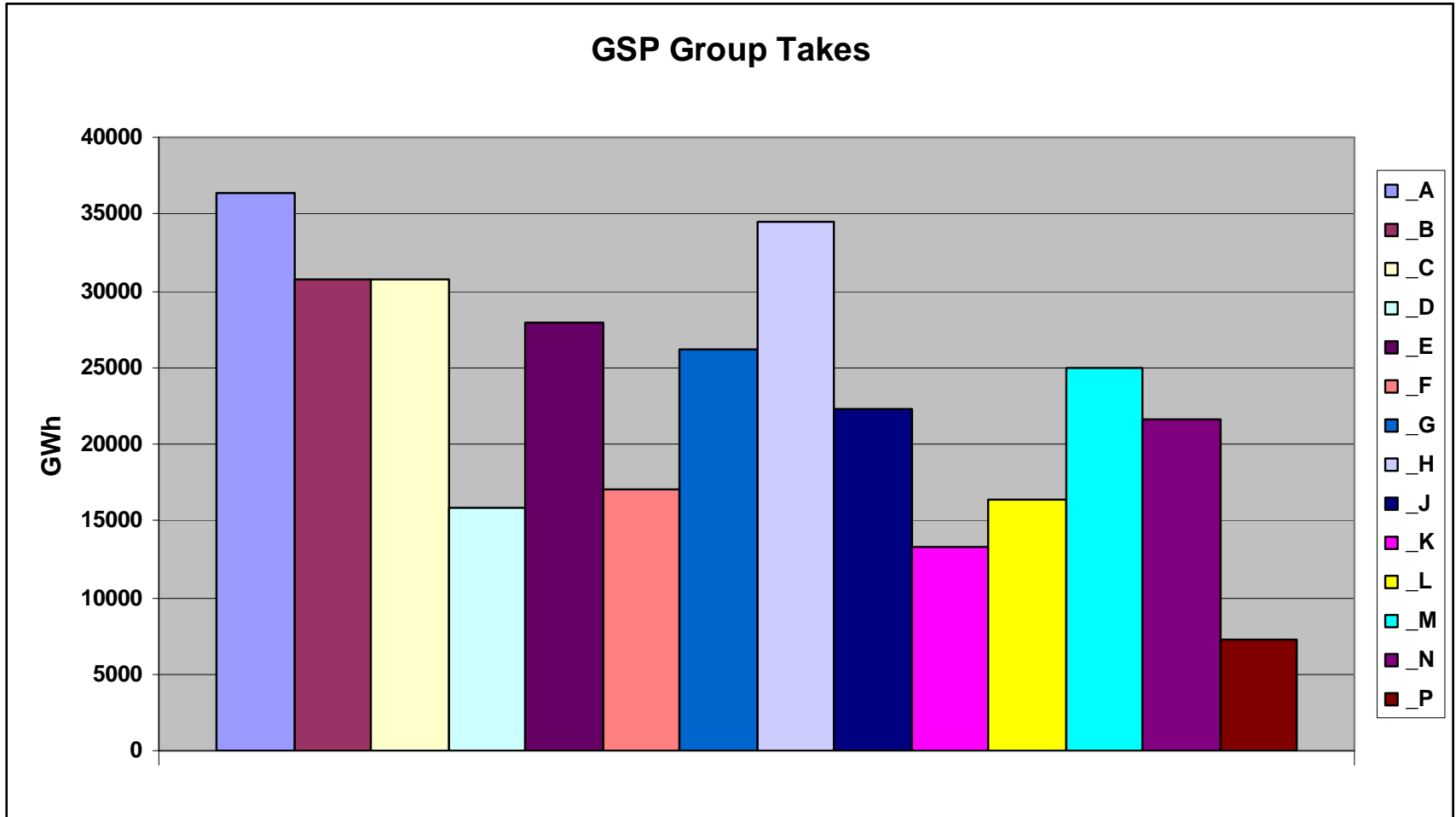


| GSP Group Id | GSP Group Name | ID |
|--------------|----------------------------|------|
| _A | Eastern | EELC |
| _B | East Midlands | EMEB |
| _C | London | LOND |
| _D | Merseyside and North Wales | MANW |
| _E | Midlands | MIDE |
| _F | Northern | NEEB |
| _G | North Western | NORW |
| _H | Southern | SOUT |
| _J | South Eastern | SEEB |
| _K | South Wales | SWAE |
| _L | South Western | SWEB |
| _M | Yorkshire | YELG |
| _N | South Scotland | SPOW |
| _P | North Scotland | HYDE |

GSP Group Takes



GSP Group Takes



Supplier Volume Allocation

- **Connected to a distribution network**
- **Registered in Supplier Meter Registration Service**
- **Associated with a Supplier**

Supplier Volume Allocation

- **Non Half Hourly & Half Hourly**
- **Import and Export**
- **Metered and Unmetered**

Supplier Volume Allocation

| | MPAN Count | Energy (GWh) | % of total import |
|---------------------|-------------------|----------------|-------------------|
| NHH Import | 28,782,241 | 179,962 | 55.5 |
| NHH UMS | 30,823 | 1,750 | 0.5 |
| Total NHH | 28,813,064 | 181,712 | 56.0 |
| HH Import | 107,334 | 140,798 | 43.4 |
| HH UMS | 209 | 1,918 | 0.6 |
| Total HH | 107,543 | 142,716 | 44.0 |
| Total Import | 28,920,607 | 324,428 | 100.0 |
| HH Export | 1,397 | 16,696 | 5.1 |
| NHH Export | 18 | 0 | 0.0 |
| Total Export | 1,415 | 16,696 | 5.1 |

- MPAN Count is for 30th September 2006
- Energy is total for 1st October 2005 to 30th September 2006.

Supplier Volume Allocation

- **Non Half Hourly: profiled consumption for each half hour**
- **Half Hourly: actual consumption for each half hour**

Supplier Volume Allocation

- There are required performance levels for the amount of energy settled on Annualised Advances (AAs) and Actuals
- 97% of NHH Energy settled on AAs at RF
- 99% of HH Energy settled on Actuals

Supplier Volume Allocation

- **Line losses are applied to SVA metered values**
- **Calculated by LDSOs**
- **Can be metering system specific for HH**

Supplier Volume Allocation

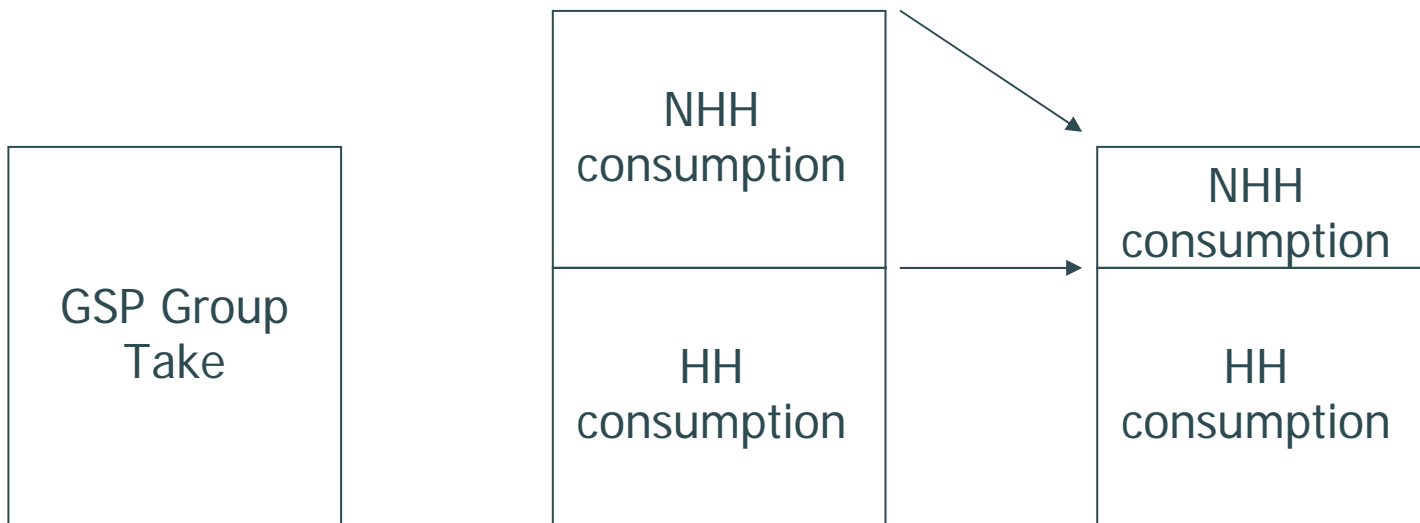
- Consumption values are aggregated to give consumption by:
 - GSP Group;
 - Supplier; and
 - Consumption Component Class

GSP Group Correction Factor

- **Total of HH Consumption and NHH Consumption does not (usually) equal the GSP Group Take**
- **A correction factor is applied to the NHH consumption so that it does**

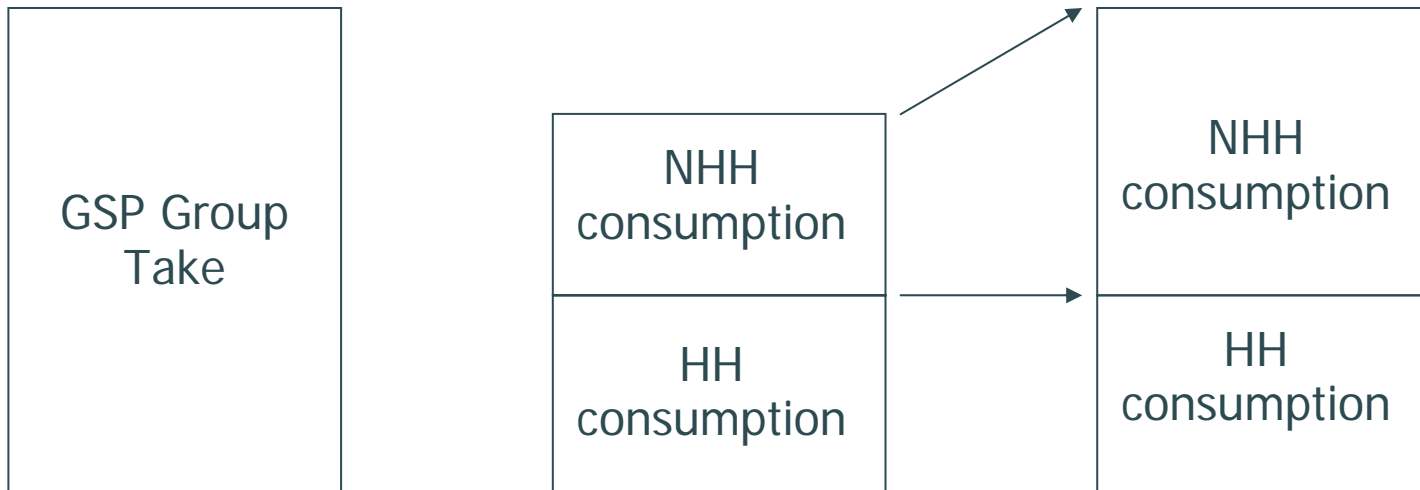
GSP Group Correction Factor

If GSP Group Take < Total Consumption
then GSP Group CF is < 1

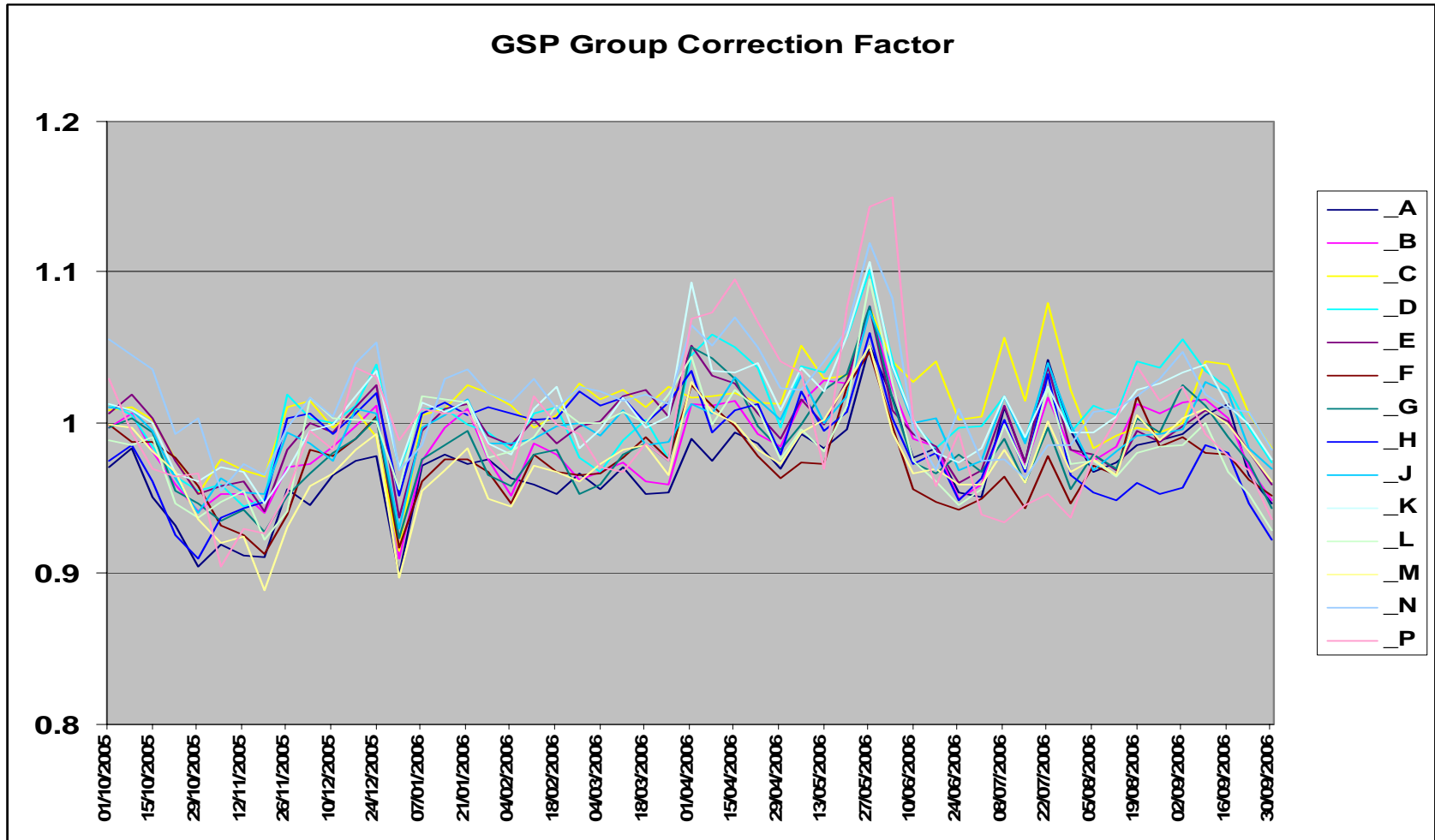


GSP Group Correction Factor

If GSP Group Take $>$ Total Consumption
then GSP Group CF is $>$ 1



GSP Group Correction Factors



Supplier BM Units

- **Consumption now aggregated to BM Unit**
- **Transmission losses are applied to BM Unit metered volume**
- **Gives credited energy which then goes into Energy Accounts**