

# March 09 Operational Overview

---

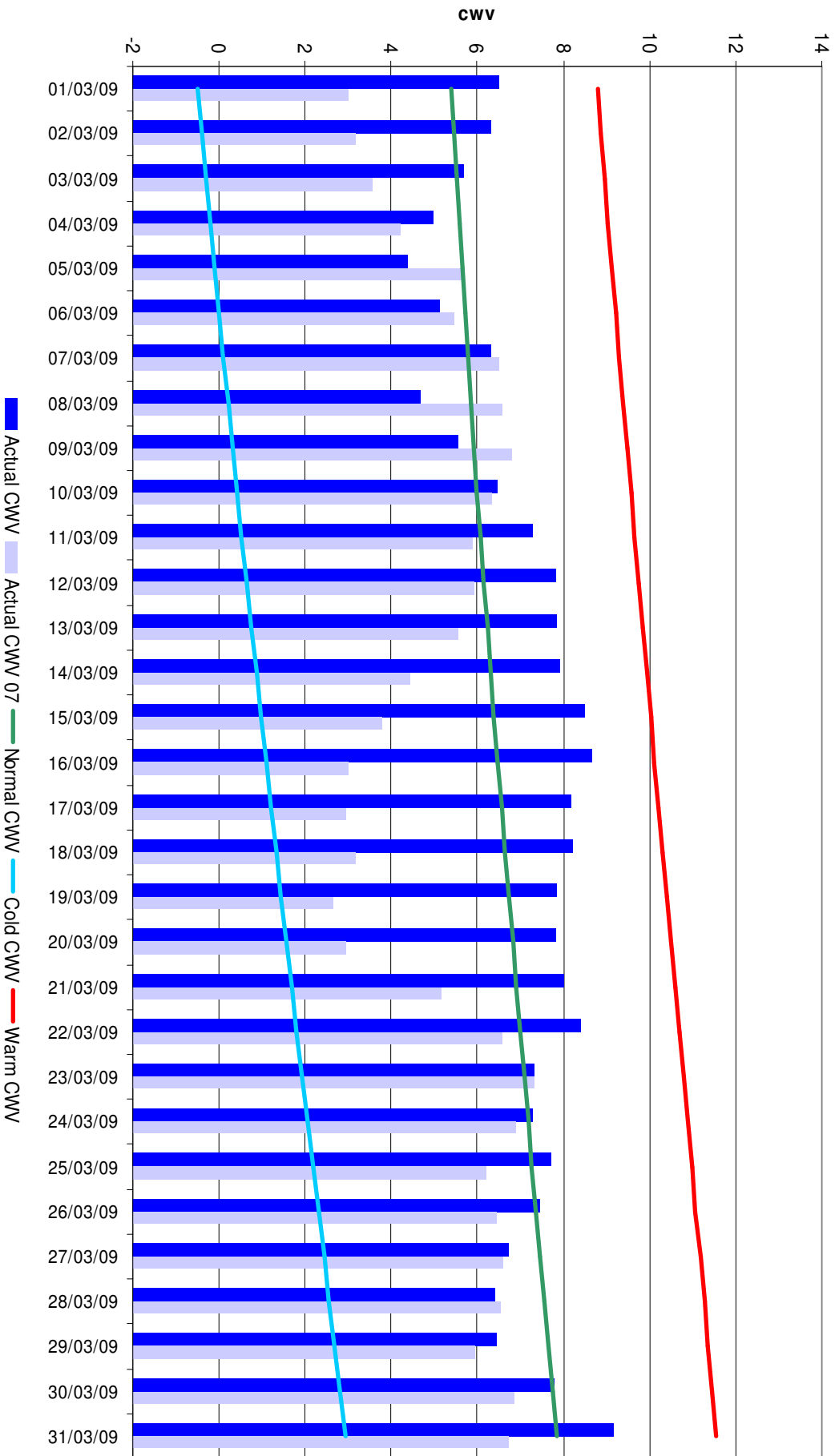
**Nolan Robertson**

**nationalgrid**

The power of action.™

# Composite Weather Variables

From 01-Mar-2009 to 31-Mar-2009

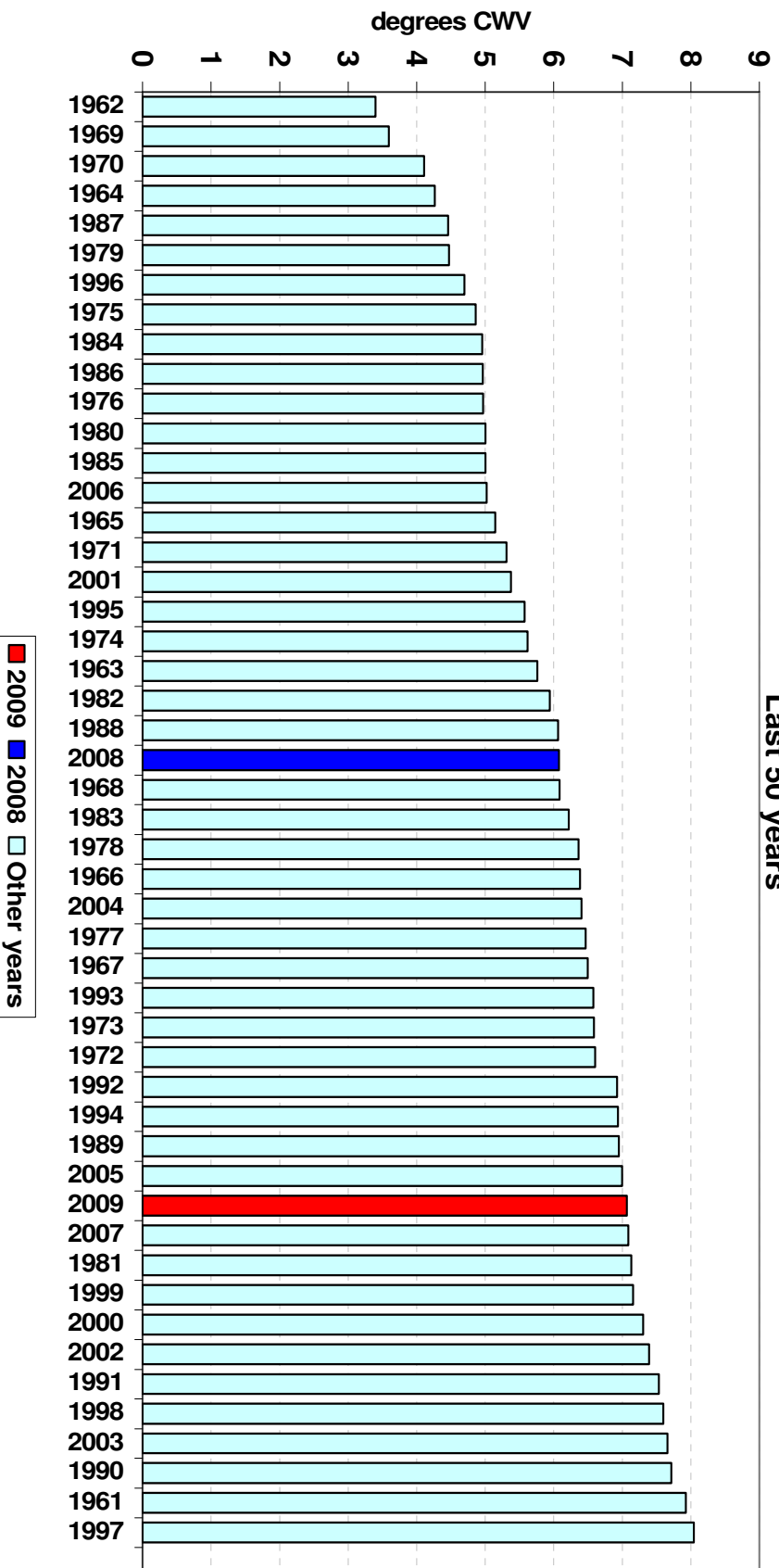


# Weather

March 2009 was the 5<sup>th</sup> warmest in the last 10 years

## Mean National Composite Weather for March

Last 50 years



## March Weather Lookback



**Mean Temperatures for March 2009 were above normal (1971 – 2000 seasonal normal) over much of the UK, particularly in Central and Eastern areas.**

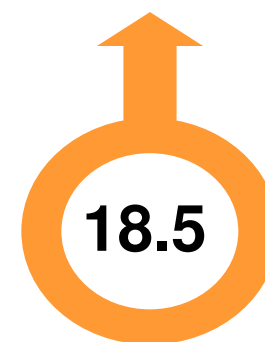
**Sunshine was generally above normal, particularly over the Midlands and Southern England. Provisionally, it was the third sunniest March over the UK since the records began in 1929.**

**Rainfall was below or close to average generally across the UK, particularly in the North East, the Midlands and Wales, these areas only saw around 50% of the average rainfall for March.**

**A Maximum instantaneous temperature of 18.5°C was recorded on the 20<sup>th</sup> at Altnaharra (Highland) and Drumnadrochit (Highland).**

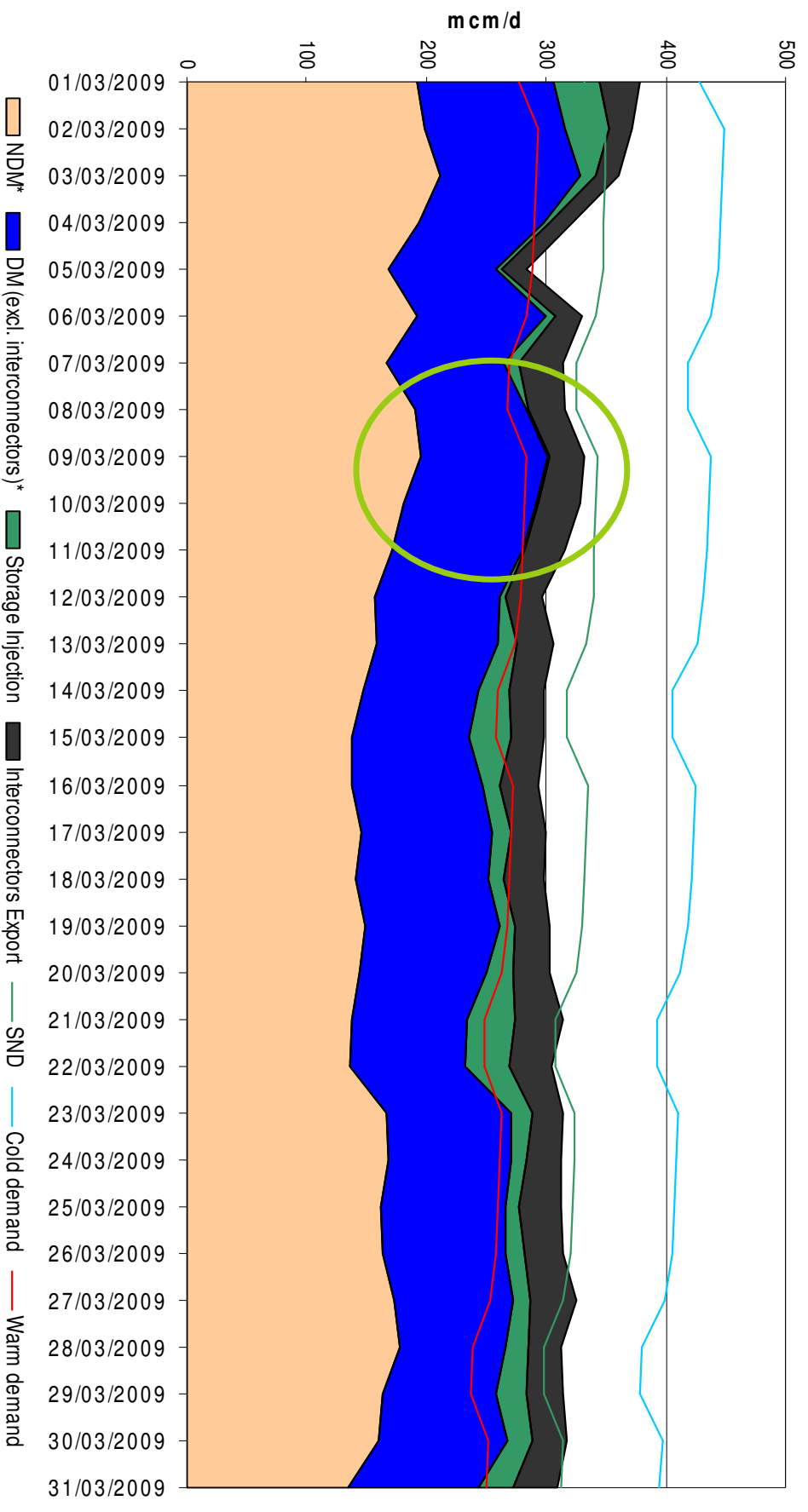
**A Minimum Instantaneous Temperature of -9.6°C was recorded on the 05<sup>th</sup> at Braemar (Aberdeenshire).**

**Wind Speed gusts of around 80 m.p.h were recorded on the 08<sup>th</sup> in the Northern Isles.**



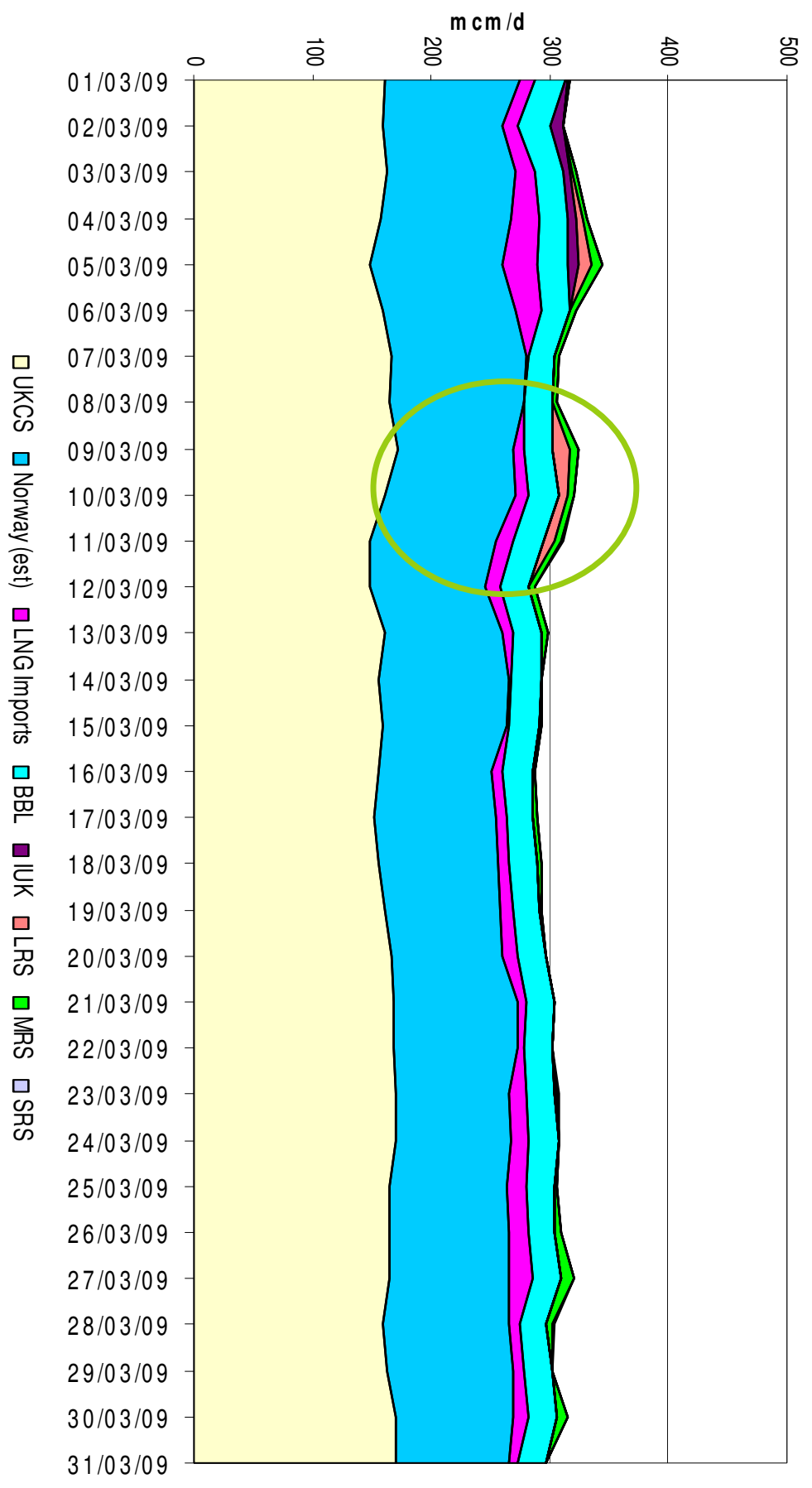
# Gas Demand Breakdown

From 01-Mar-2009 to 31-Mar-2009



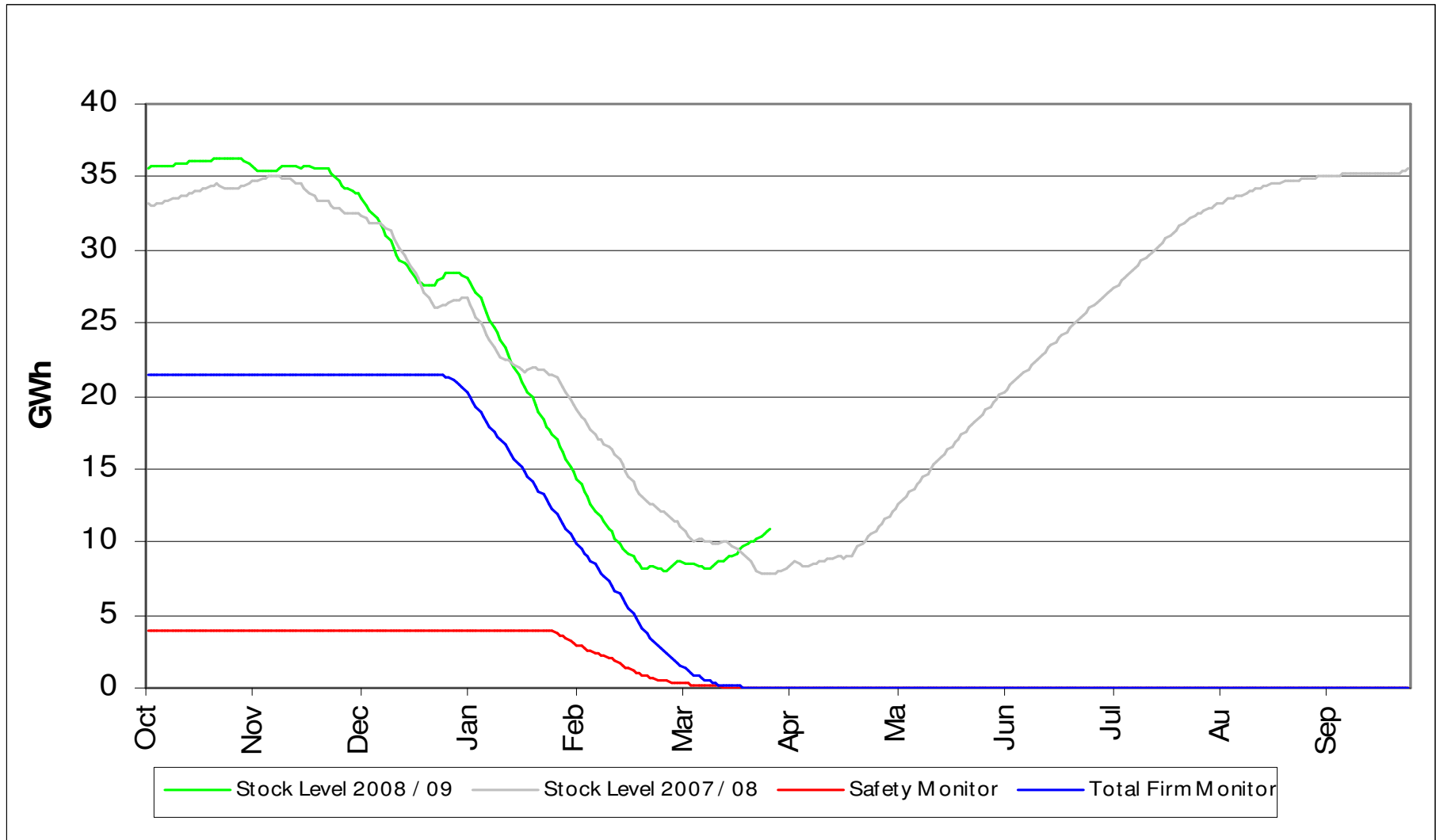
# Gas Supply

From 01-Mar-2009 to 31-Mar-2009



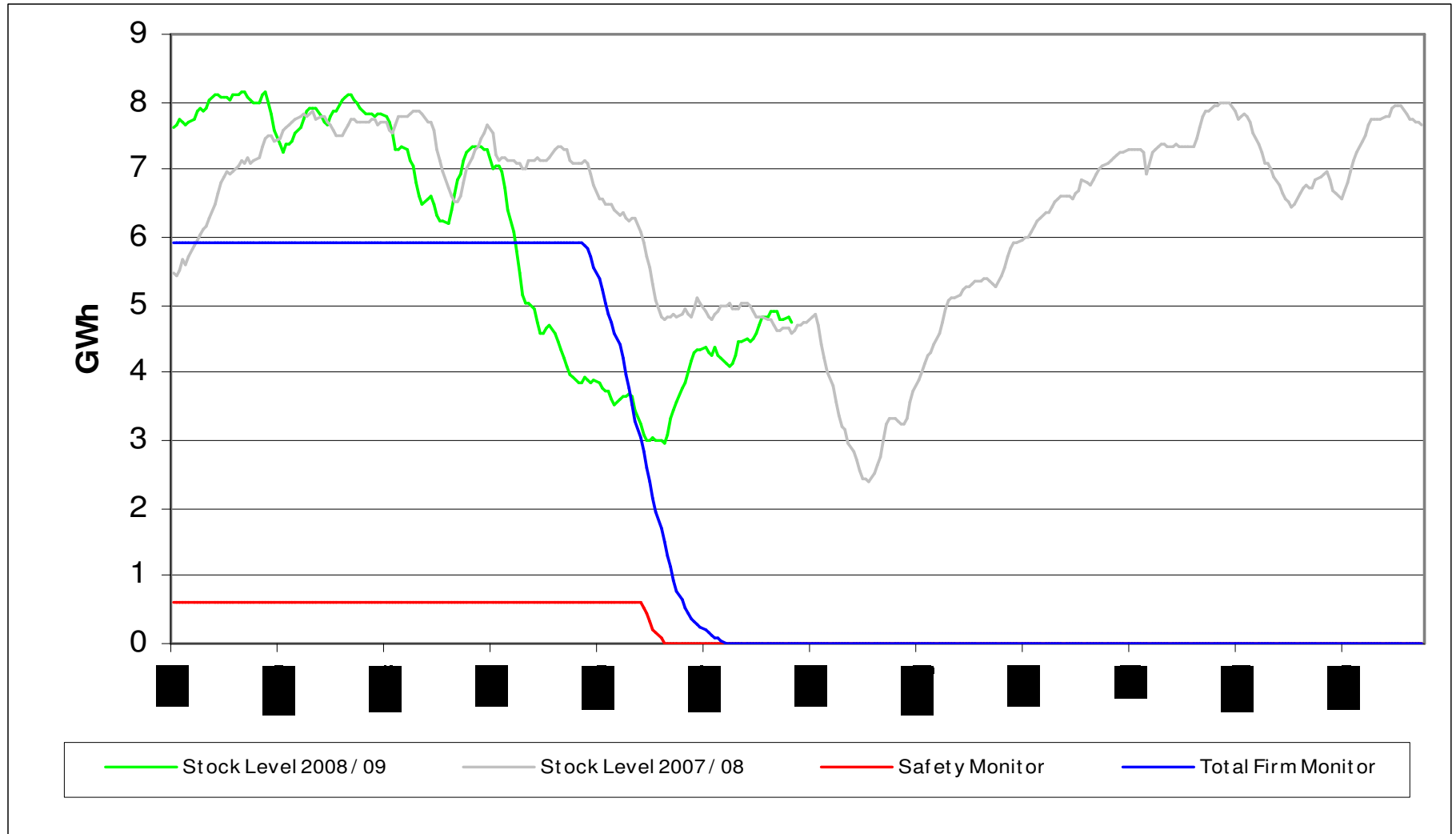
# LRS Stocks

From 01-Oct-2008 to 31-Mar-2009



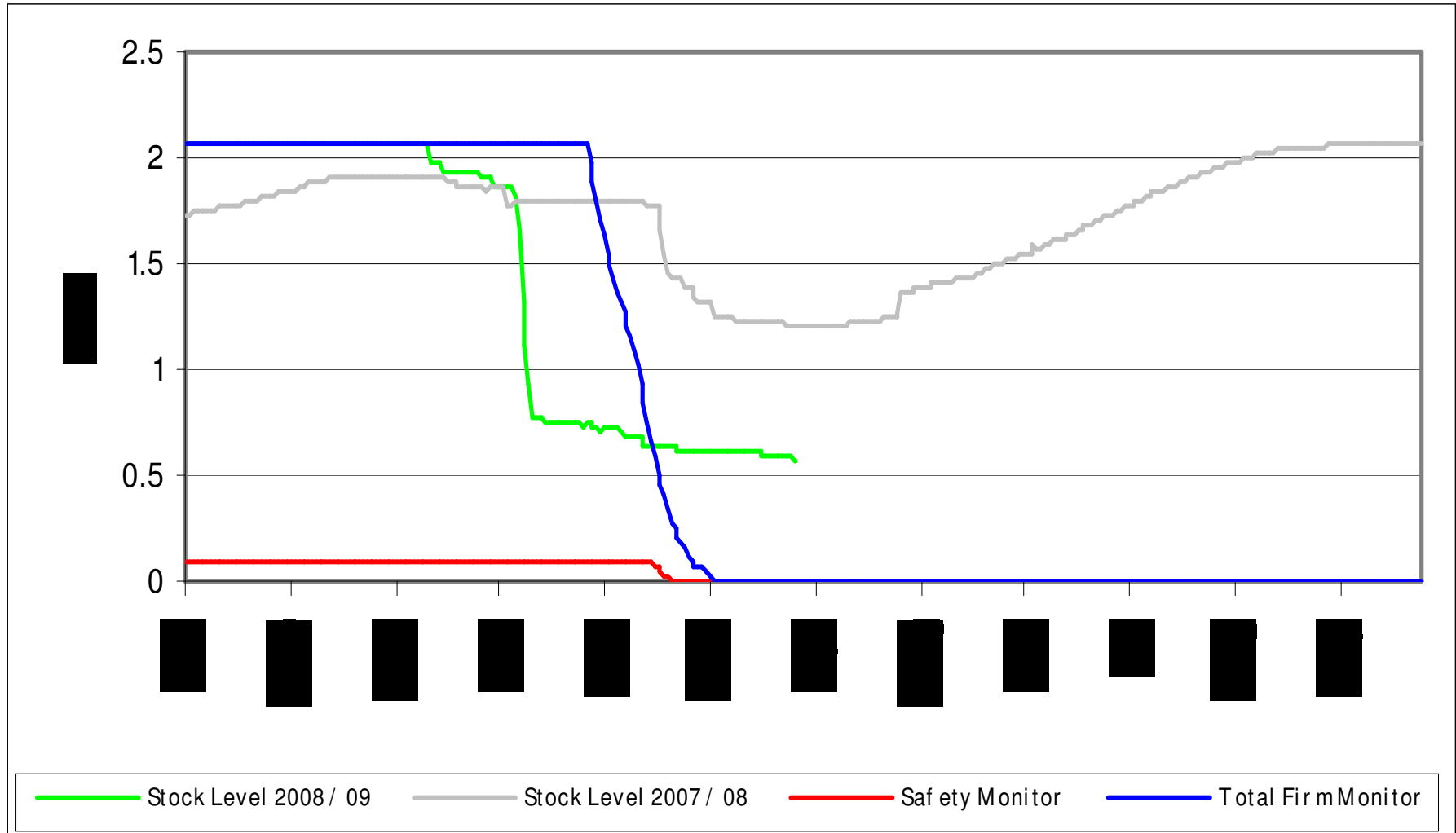
# MRS Stocks

From 01-Oct-2008 to 31-Mar-2009



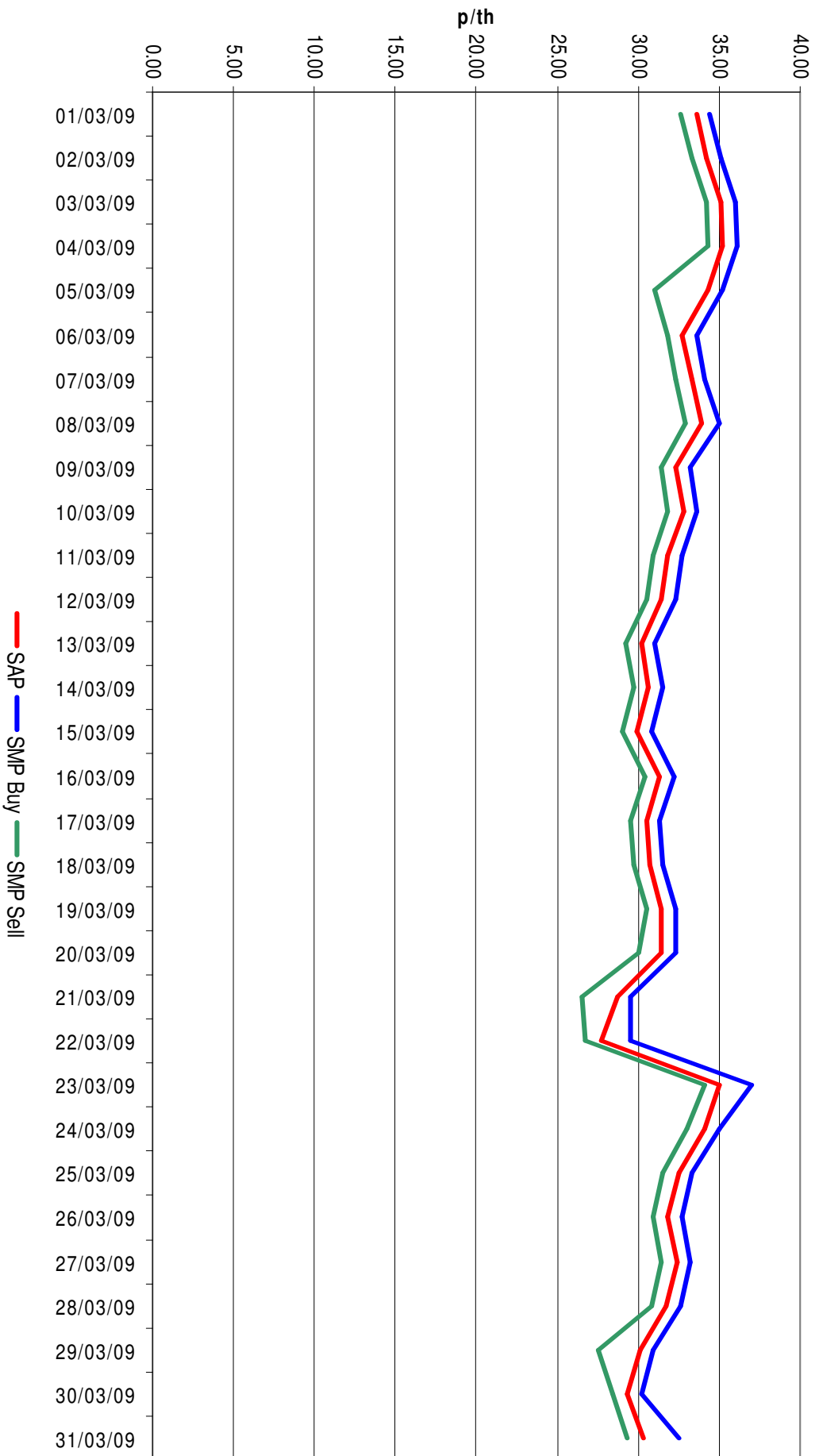
# SRS Stocks

From 01-Oct-2008 to 31-Mar-2009



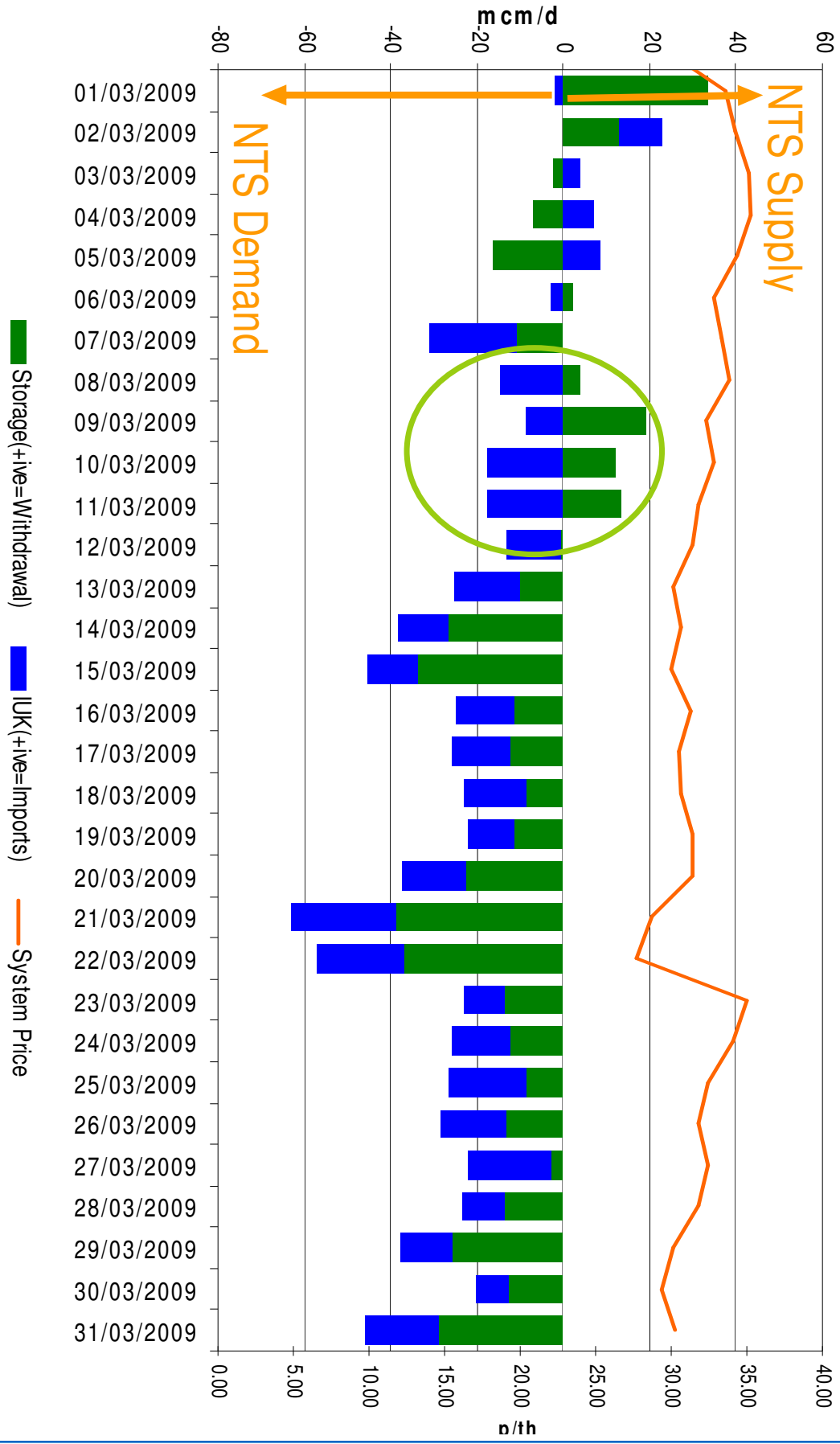
# System Prices

From 01-Mar-2009 to 31-Mar-2009



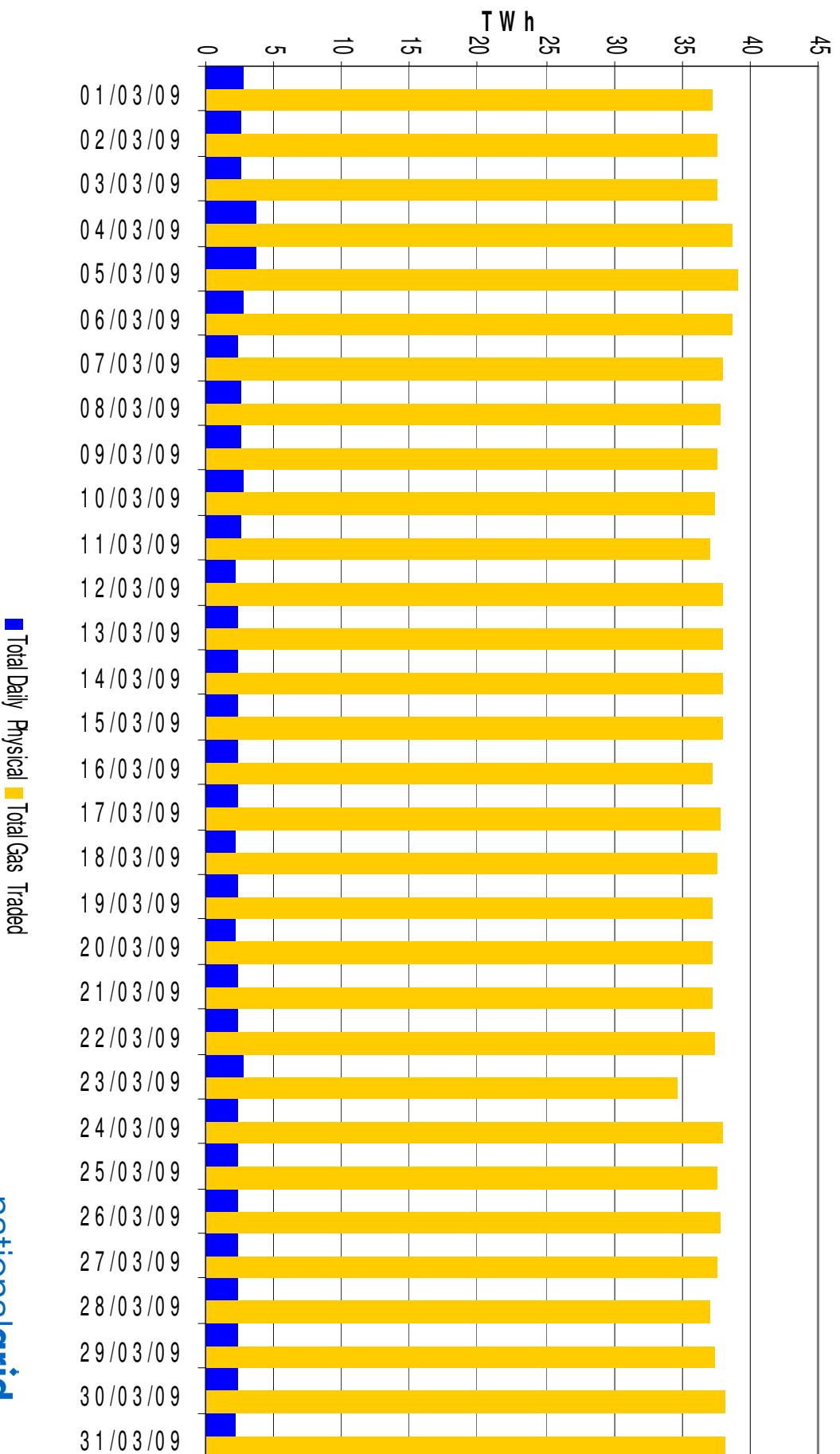
# Price vs I(UK) & Storage Outturn

From 01-Mar-2009 to 31-Mar-2009



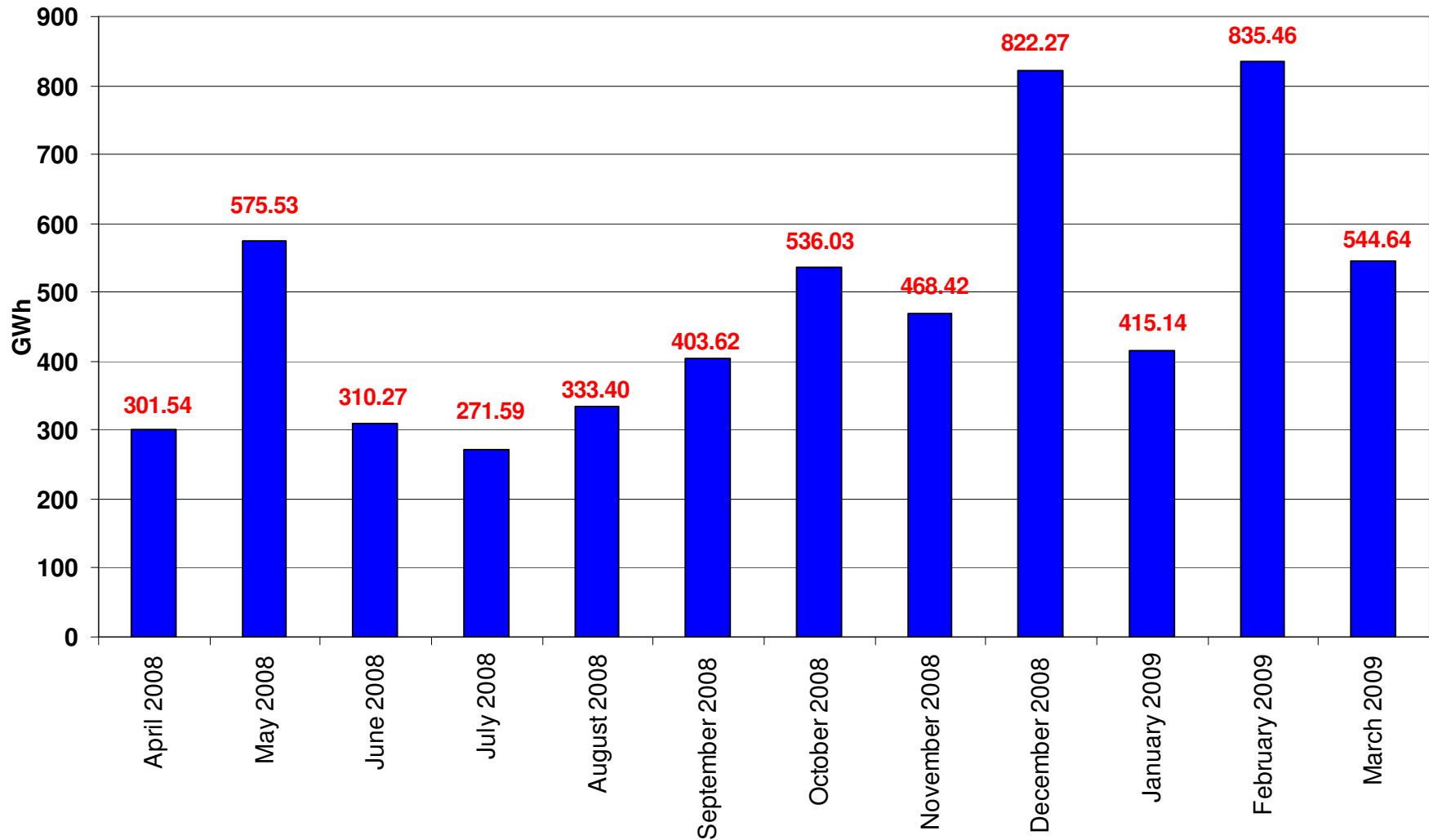
# All NBP Trades vs NBP Gas Flows

From 01-Mar-2009 to 31-Mar-2009



# Transporter Energy Traded on the OCM – By Market

From Apr-2008 to Mar-2009

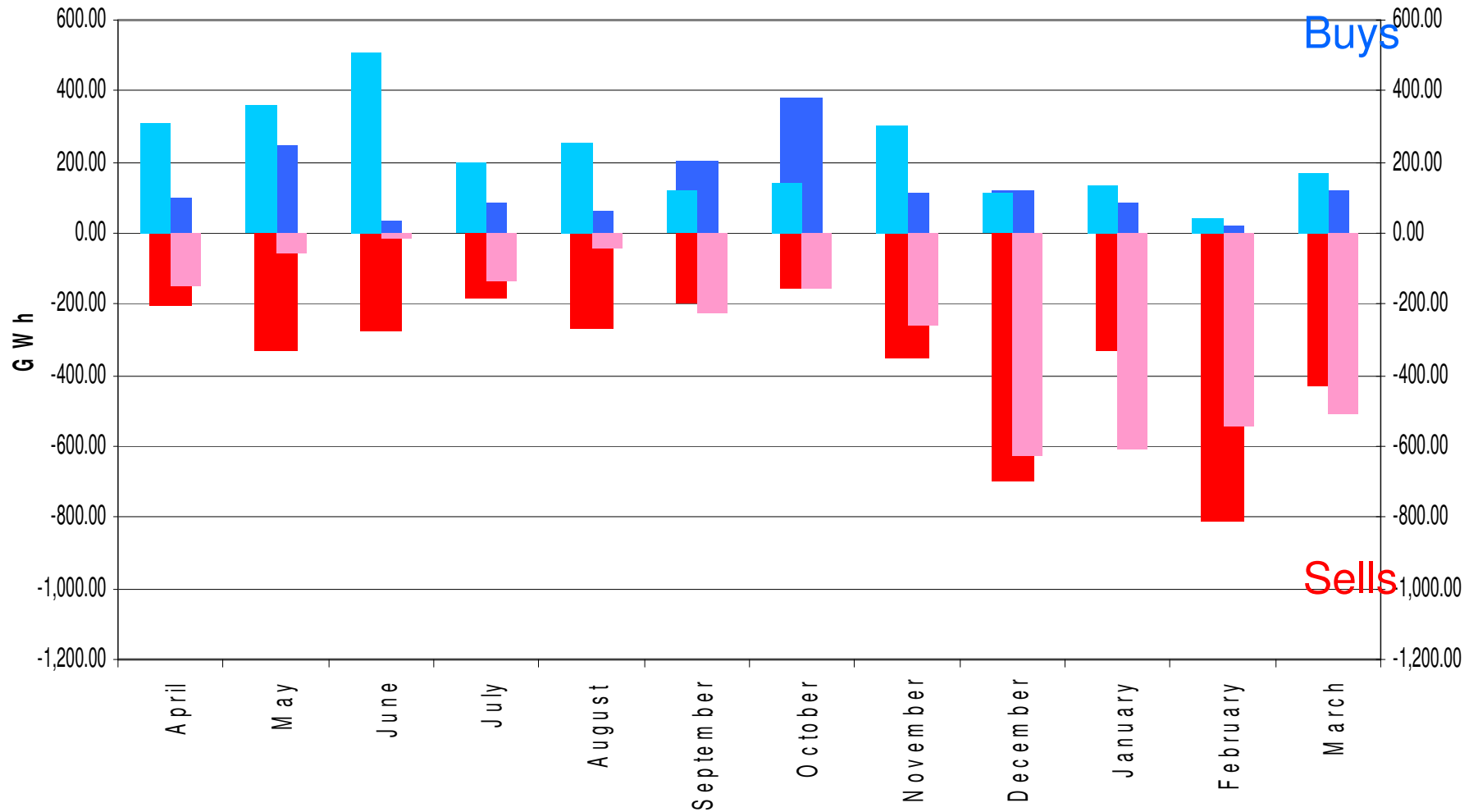


■ Locational for Locational Reasons 
 ■ Locational for Price 
 ■ Physical 
 ■ Title

# Transporter Energy Traded on the OCM – Buys / Sells

Comparison between 2008 and 2009 – Apr to Dec.

Comparison between 2009 and 2008 – Jan - Mar



■ Current Year Buys ■ Current Year Sells ■ Previous Year Buys ■ Previous Year Sells

# Days of Default SMP Prices

From 01-Mar-2009 to 31-Mar-2009

## Percentage of Days of Default SMP

March 2009

**SMP Buy**

**SMP Sell**

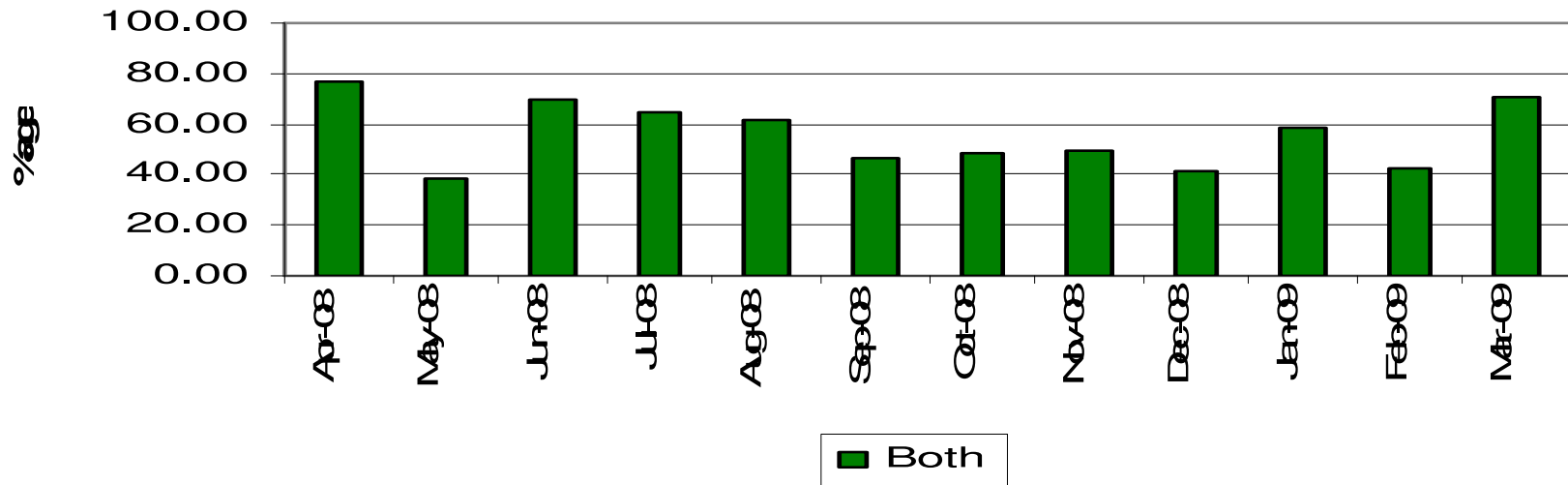
**Both**

87.1%

83.9%

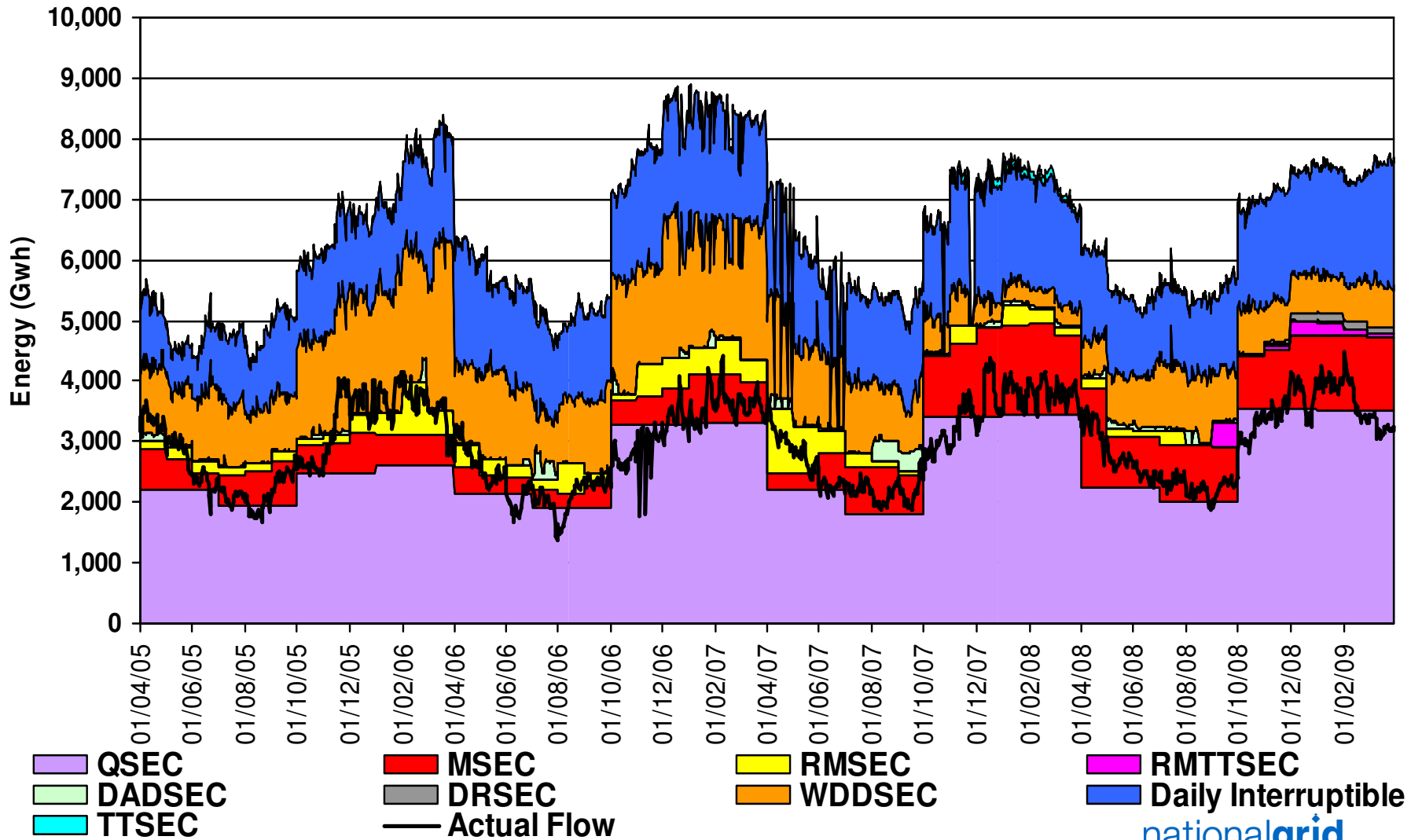
71.0%

### Days Of Default SMP



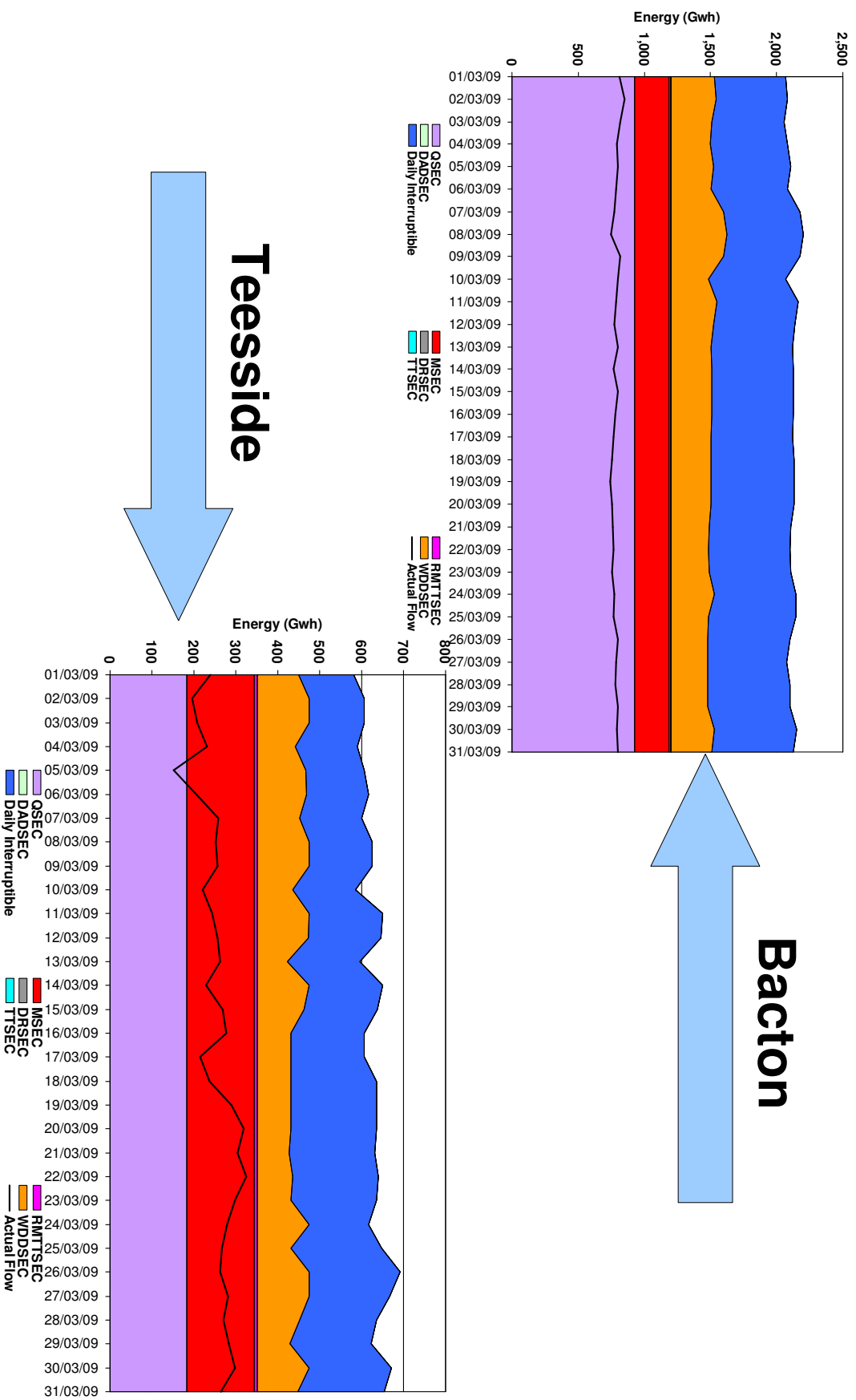
# Capacity Sold vs Actual Flows (For the 6 Major ASEPS)

From 01-Apr-2005 to 31-Mar-2009



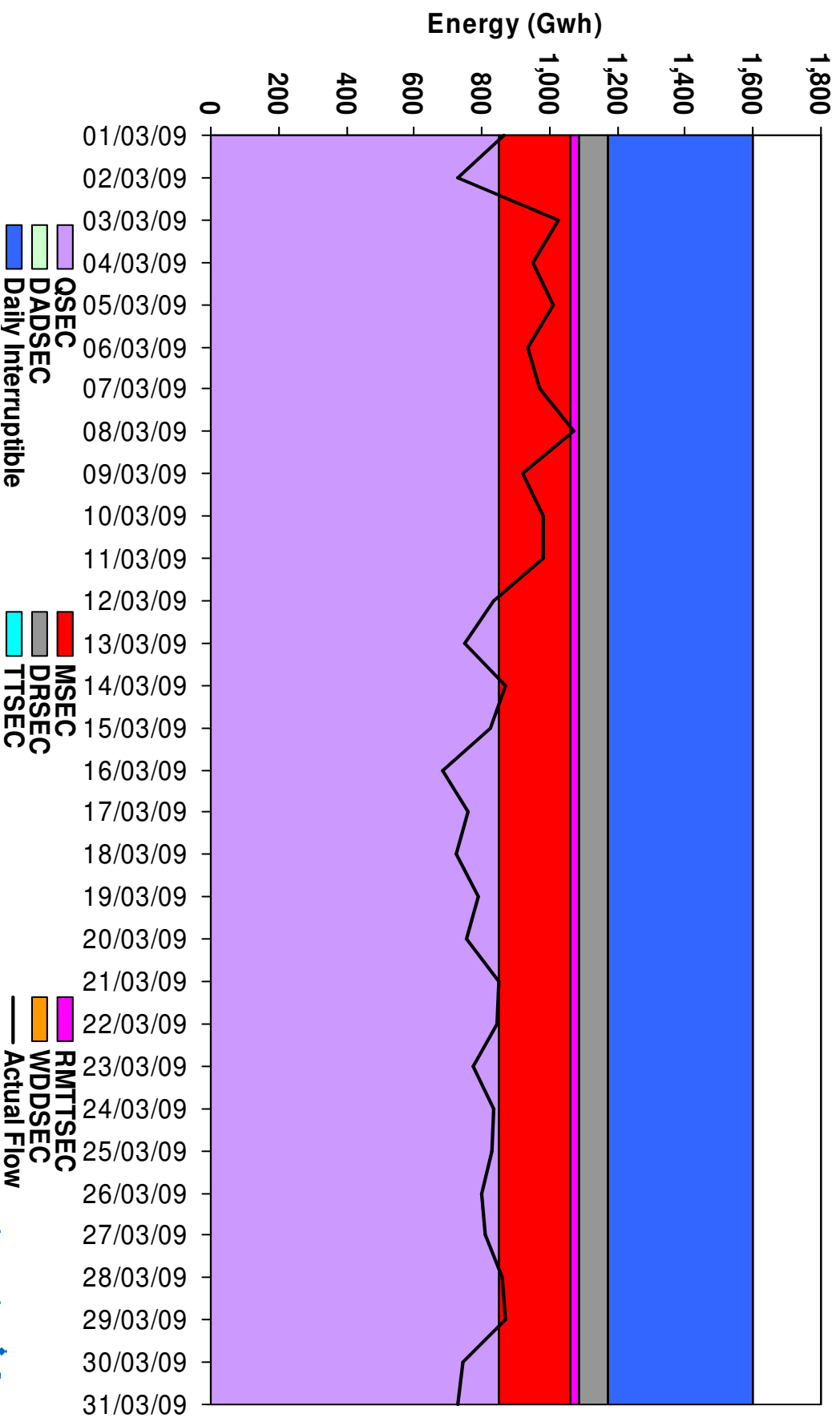
# Capacity Sold vs Actual Flows

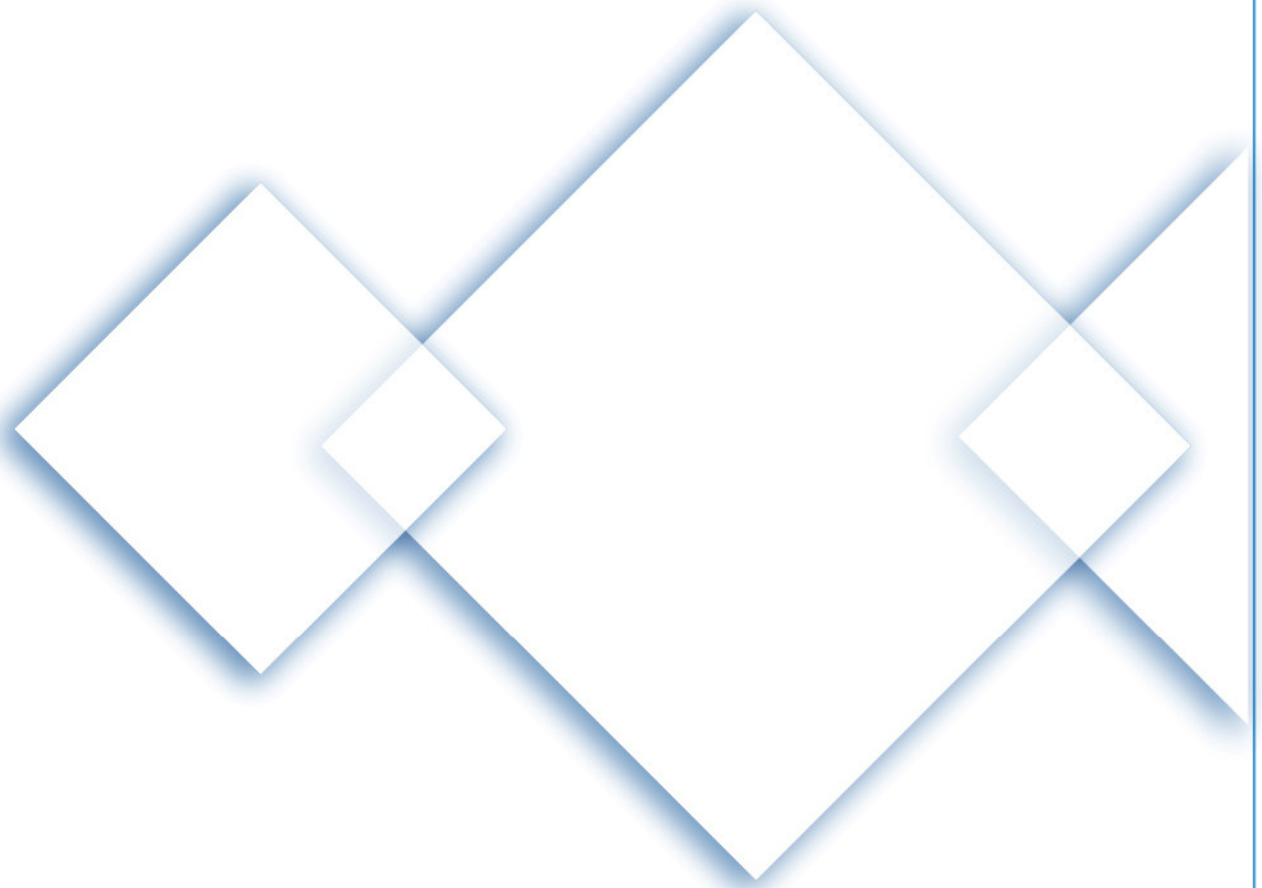
From 01-Mar-2009 to 31-Mar-2009



# Easington – Capacity Sold vs Actual Flows

From 01-Mar-2009 to 31-Mar-2009





# Throughput and Neutrality

---

**February 2009**

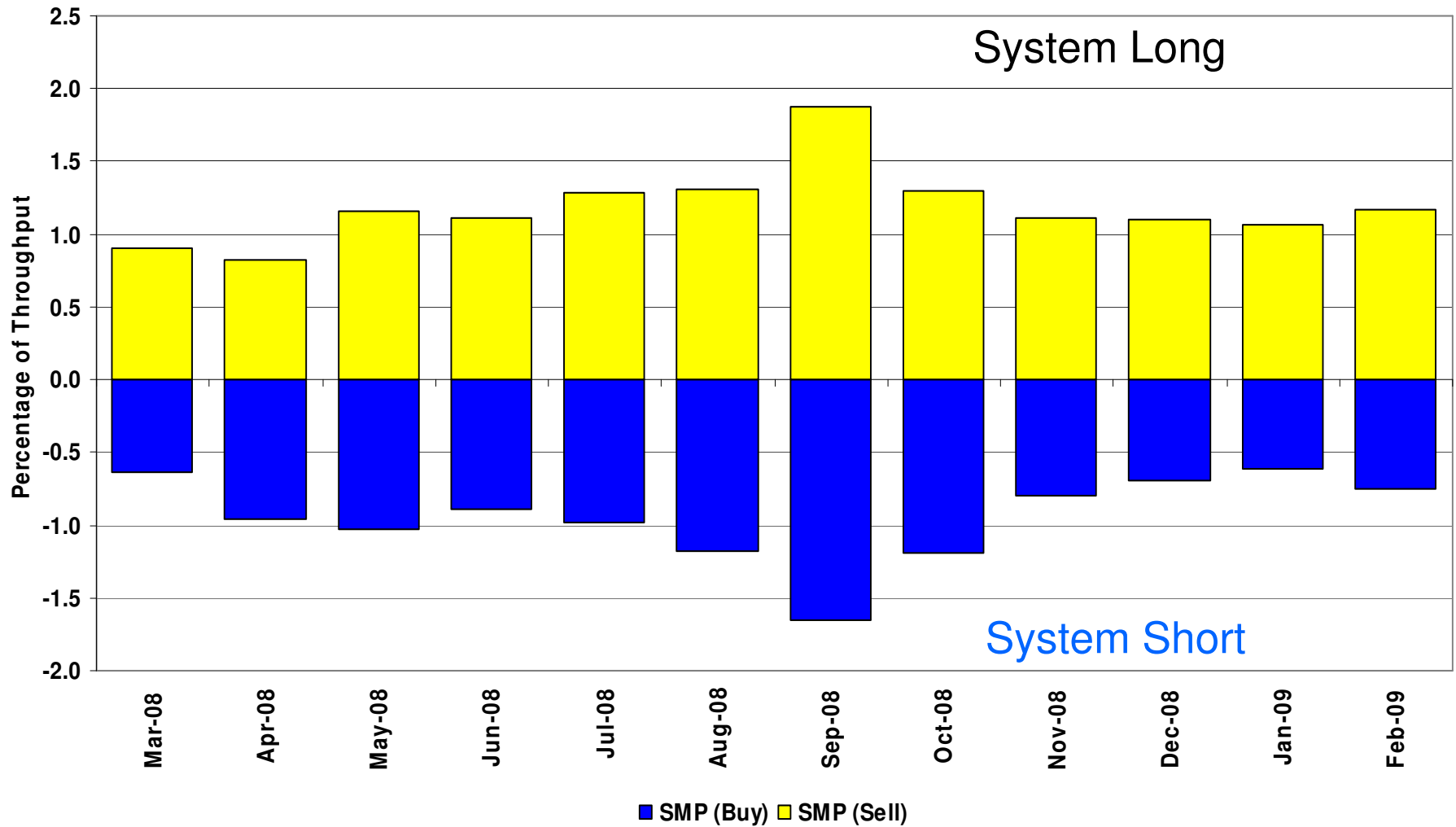
The Throughput and Neutrality information is dependant on Entry closeout and therefore the data is only available for the period up until 28-February-2009.

**nationalgrid**

The power of action.™

# System Level Imbalance as a % of Throughput

From 01-Mar-2008 to 28-Feb-2009



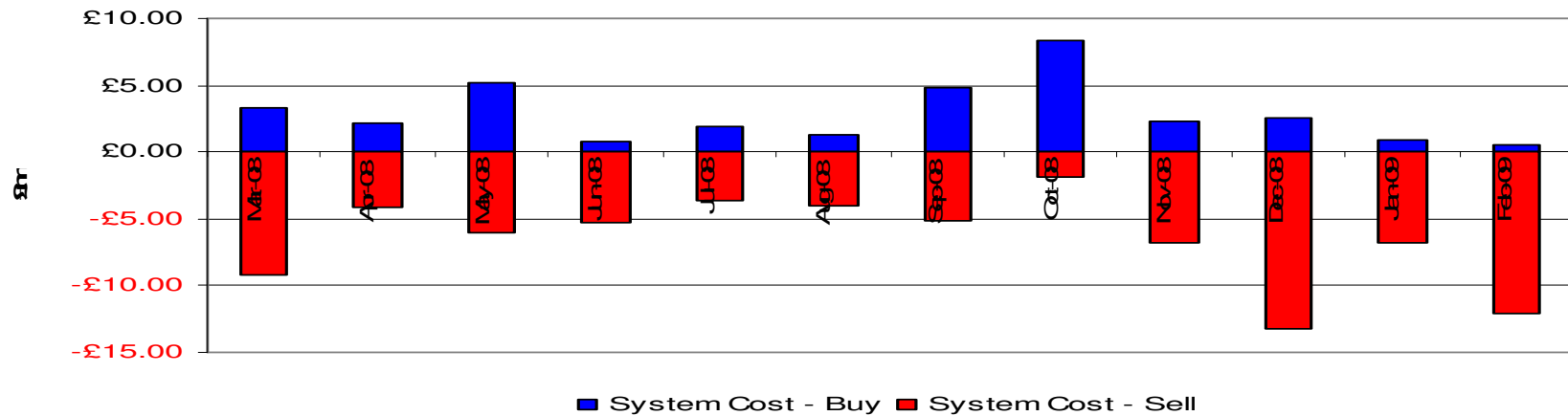
# Transporter Actions on OCM Mechanism Revenues / Costs

From 01-Oct-2008 to 28-Feb-2009

	Quantity (TWh)	Average Price (p/KWh)	Average Price (p/therm)	Cost (£m)
System Buy	0.688	2.1218	62.16	£14.60
System Sell	-2.354	1.7314	50.73	-£40.76

**Net Position 1.666 Sell**

**-£26.16**



# Imbalance Gas Revenues / Costs

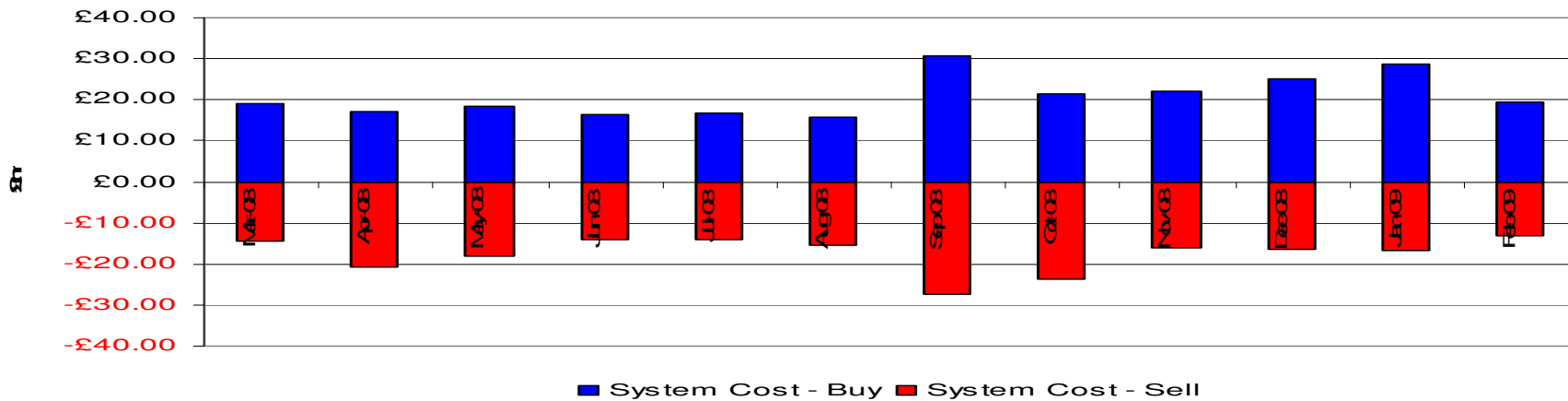
From 01-Oct-2008 to 28-Feb-2009

System	Quantity (TWh)	Average Price (p/KWh)	Average Price (p/therm)	Cost £m
System Buy	6.56	1.7802	52.16	£116.74
System Sell	-4.55	1.8968	55.57	-£86.29

## Net Position

**2.01 Buy**

**£30.45**

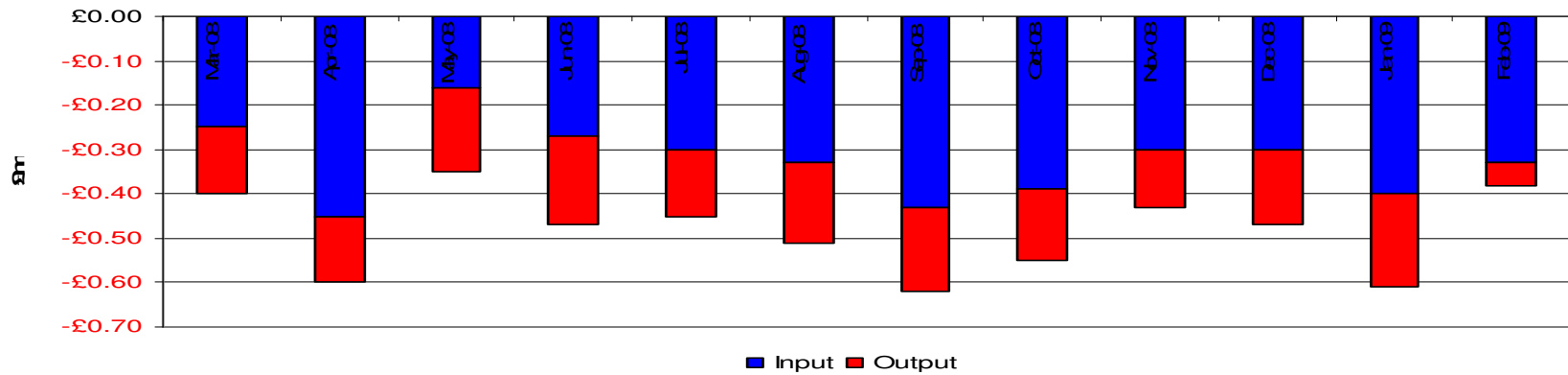


# Scheduling Revenues

From 01-Oct-2008 to 28-Feb-2009

	Cost £m
Input	-£1.72
Output	-£0.71

**Total -£2.43**

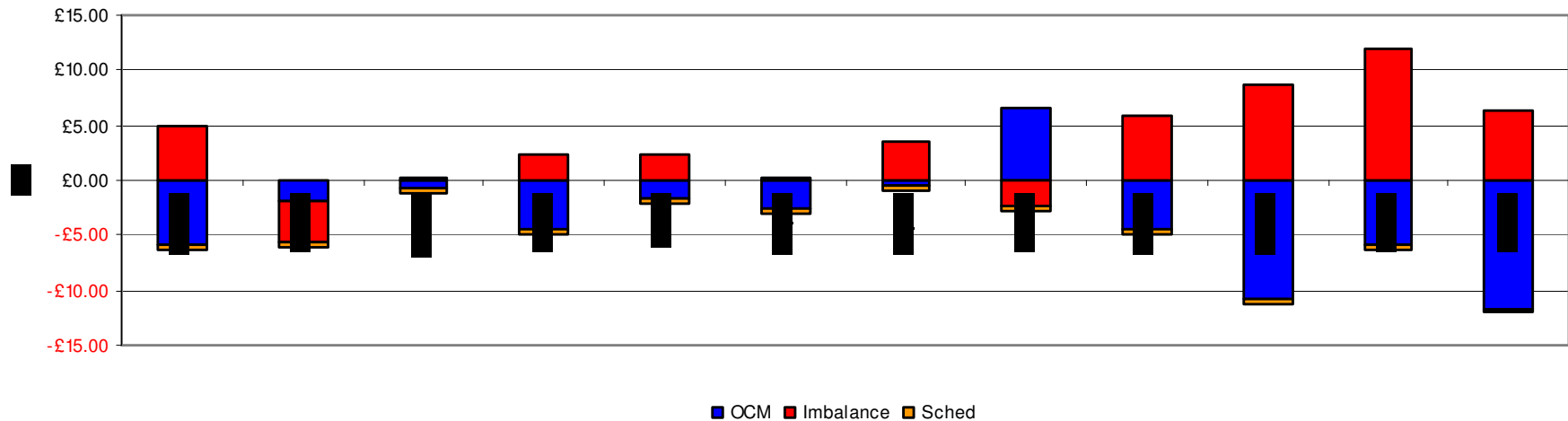


# Balancing Costs

From 01-Oct-2008 to 28-Feb-2009

	£m
OCM/Flex Gas	-26.15
Imbalance Gas	30.45
Scheduling	-2.43

**Balancing Cost** **1.87**  
**(0.0003p/KWh or 0.0096p/Therm of Throughput)**



## Energy Neutrality : Gas Year Comparison

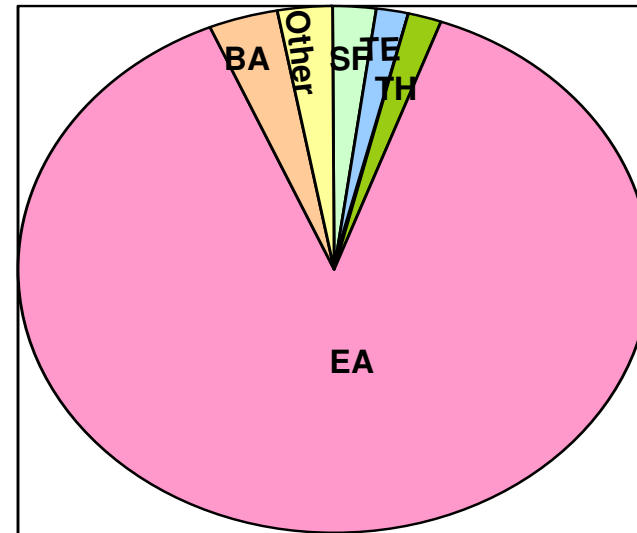
(For October to February)

	<b>Gas Year 2007/2008</b>	<b>Gas Year 2008/2009</b>
<b>Neutrality by Throughput</b> <b>(p/therm)</b>	<b>0.0247</b>	<b>0.0096</b>

# Capacity Neutrality – Revenues From DSEC & DAI

From 01-Apr-2008 to 28-Feb-2009

ASEP	Revenue
St Fergus	£115,937.24
Teesside	£90,931.07
Barrow	£3,712.50
Theddlethorpe	£85,193.79
Easington	£4,744,253.91
Bacton	£195,395.64
Other	£145,824.09
<b>TOTAL</b>	<b>£5,381,248.25</b>



## Capacity Neutrality – Prompt Buy Backs

From 01-Apr-2008 to 28-Feb-2009

<b>ASEP</b>	<b>Cost</b>	<b>No.of days</b>	<b>Volume (kWh)</b>
St Fergus	£0	0	0
Teesside	£0	0	0
Barrow	£0	0	0
Theddlethorpe	£0	0	0
Easington	£0	0	0
Bacton	£0	0	0
<b>TOTAL</b>	<b>£0</b>	<b>0</b>	<b>0</b>

## Capacity Neutrality – Revenues From Overruns

From 01-Apr-2008 to 28-Feb-2009

Month	Revenue
April 2008	-£74,782.95
May 2008	-£285,586.70
June 2008	-£18,191.35
July 2008	-£299.65
August 2008	-£13,489.27
September 2008	-£275,737.07
October 2008	-£5,841.38
November 2008	-£2,663.34
December 2008	-£93,750.43
January 2009	-£47,686.62
February 2009	-£2,005.40
<b>Total</b>	<b>-£820,034.16</b>

## Capacity Neutrality – Capacity Management Agreement

From 01-Apr-2008 to 28-Feb-2009

<b>Month</b>	<b>Cost</b>
April 2008	£0.00
May 2008	£0.00
June 2008	£0.00
July 2008	£0.00
August 2008	£0.00
September 2008	£0.00
October 2008	£3,441.00
November 2008	£138,820.42
December 2008	£351,128.40
January 2009	£388,295.74
February 2009	£150,387.53
<b>Total</b>	<b>£1,032,073.09</b>

## Capacity Neutrality – Net Cost/Revenue

From 01-Apr-2008 to 28-Feb-2009

<b>DSEC/DAI Revenue</b>	<b>-£5,381,248.25</b>
<b>Buy back costs</b>	<b>+£0.00</b>
<b>Capacity Management Agreement</b>	<b>+£1,032,073.09</b>
<b>Overrun Revenue</b>	<b>-£820,034.16</b>
<b>Net Revenue</b>	<b>-£5,169,209.32</b>

# January 09 Linepack Vs Imbalance

