

Fast Reserve

Market Information for Tenders for December 2008

National Grid publishes this information, in order to inform potential participants for the Fast Reserve tender round for December 2008.

Fast Reserve Availability

Our indicative requirement for Fast Reserve in December 2008 is shown on a Settlement Period basis in Figure 1. This requirement covers weekdays, Saturdays, Sundays and Bank Holidays.

Fast Reserve Daily Requirement for December 2008

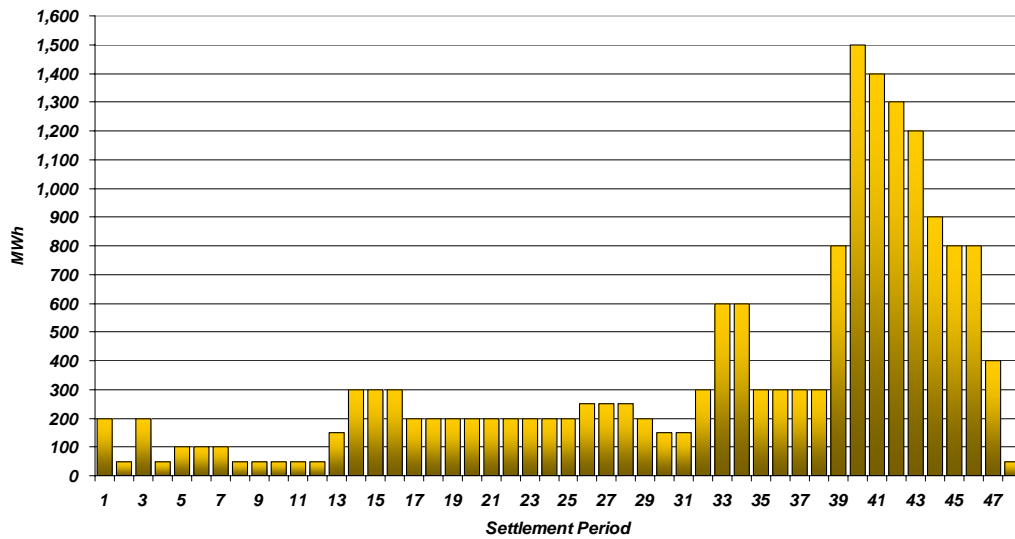


Figure 1

Figure 1 gives an indication of the times of day when Fast Reserve is most useful to National Grid. The actual amount of Fast Reserve "holding" varies from day to day, according to system conditions.

Fast Reserve Utilisation

Figure 2 shows the daily utilisation of Fast Reserve in the BM and elsewhere during September 2008 and October 2008. The BM information is based on the aggregate of Offers plus Bids accepted to provide Fast Reserve or an equivalent service.

Daily Accepted Fast Reserve Volume

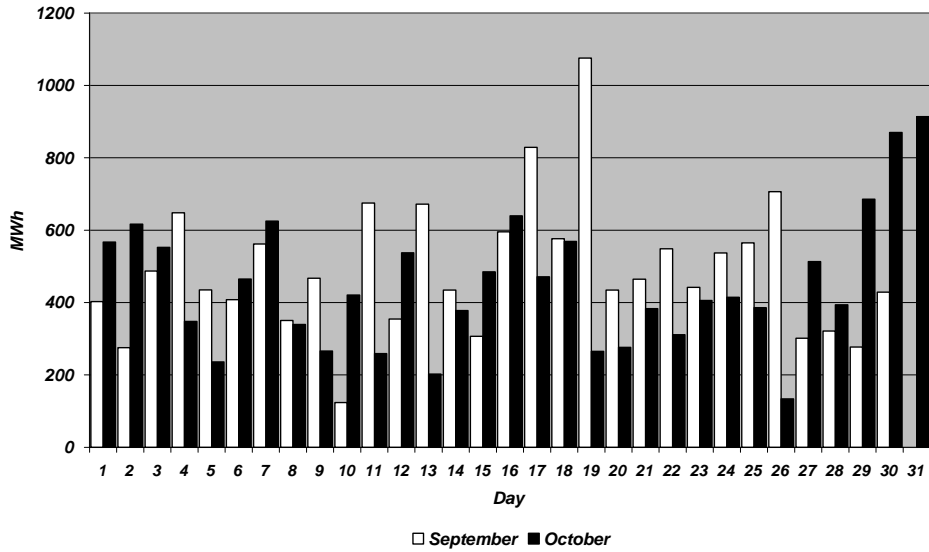


Figure 2

Figure 3 represents this data as total utilisation by Settlement Period across each month. This shows the daily profile of Fast Reserve utilisation.

Period Accepted Fast Reserve Volume

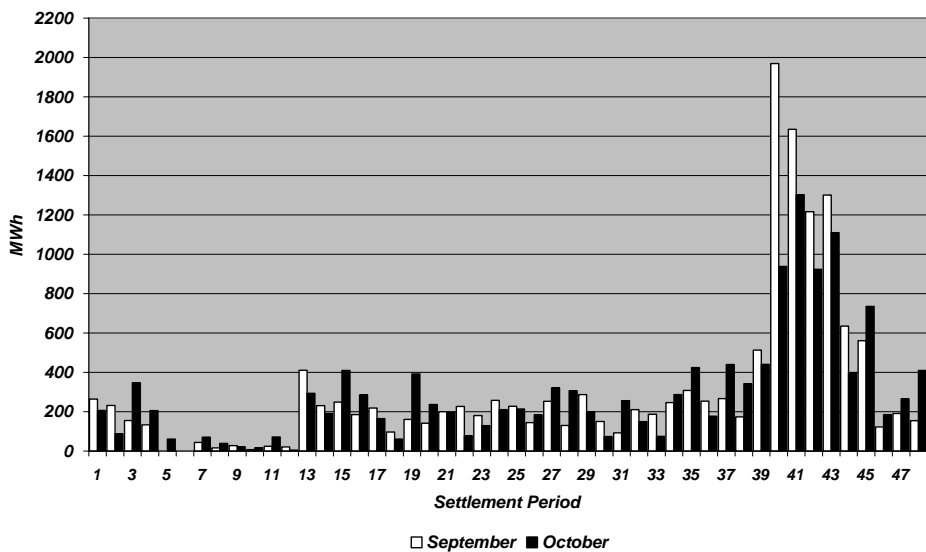


Figure 3

Figure 4 represents the same historical data, as an average utilisation price per Settlement Period for each month.

Period Average Fast Reserve Utilisation Price

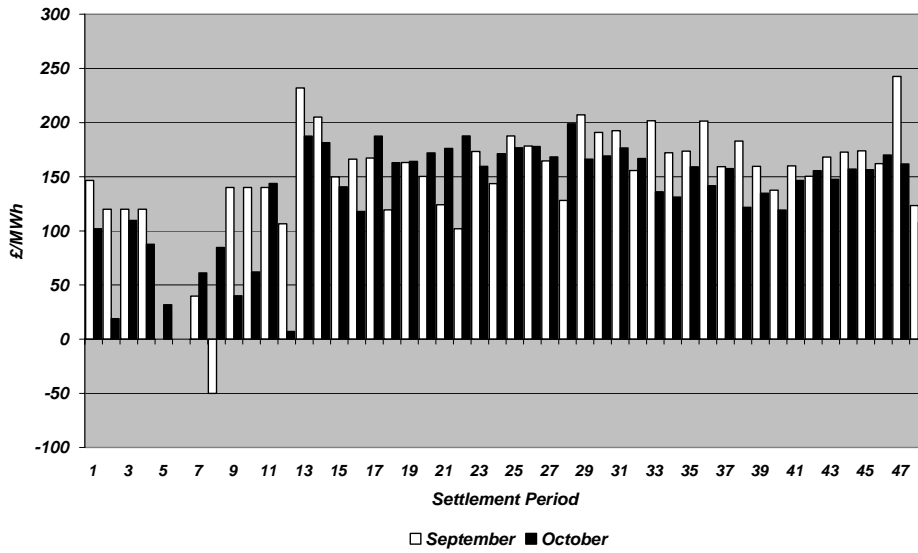


Figure 4

Finally, the same data is used in Figure 5, below, to show the profile of total Fast Reserve utilisation expenditure per Settlement Period for each month.

Period Total Fast Reserve Utilisation Expenditure

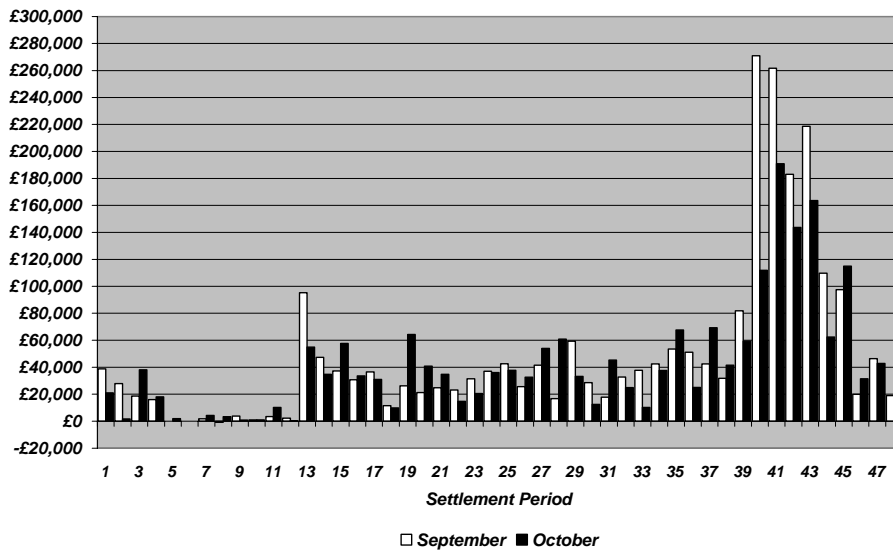


Figure 5

The total volumes of Fast Reserve utilisation of **14.71GWh** for September 2008 and **13.93GWh** for October 2008, broken down into price bands are as follows:

September	Price band (£/MWh range)	Volume (MWh)	Average Price (£/MWh)	Cost (£m)
	2000 to 99999	0	n/a	n/a
OFFERS	1000 to 2000	0	n/a	n/a
	300 to 1000	257	333	0.09
	0 to 300	11,157	179	1.99
Total		11.41GWh		£2.08m
	0 to 300	-1,426	49	-0.07
BIDS	-300 to 0	-1,830	-185	0.34
	-1000 to -300	-38	-461	0.02
	-2000 to -1000	0	n/a	n/a
	-99999 to -2000	0	n/a	n/a
Total		-3.29GWh		£0.29m
Total		14.71GWh		£2.37m

October	Price band (£/MWh range)	Volume (MWh)	Average Price (£/MWh)	Cost (£m)
	2000 to 99999	0	n/a	n/a
OFFERS	1000 to 2000	0	n/a	n/a
	300 to 1000	32	329	0.01
	0 to 300	11,732	163	1.92
Total		11.76GWh		£1.93m
	0 to 300	-1,326	31	-0.04
BIDS	-300 to 0	-825	-191	0.16
	-1000 to -300	-18	-443	0.01
	-2000 to -1000	0	n/a	n/a
	-99999 to -2000	0	n/a	n/a
Total		-2.17GWh		£0.12m
Total		13.93GWh		£2.05m

For the month of December 2008, tenders from eligible Service Providers for firm Fast Reserve should be submitted to National Grid by Friday 14th November 2008 (business day 10). National Grid will notify Service Providers of the outcome of the tender assessment by Friday 21st November 2008 (business day 15).

Tenders should be sent for the attention of:

Bea Ennim
Network Operations
National Grid Electricity Transmission plc
National Grid House
Warwick Technology Park
Gallows Hill
Warwick
CV34 6DA

Tenders can be sent by fax to Bea Ennim on 01926 656612.