

# MIPI Phase 2 Update

---

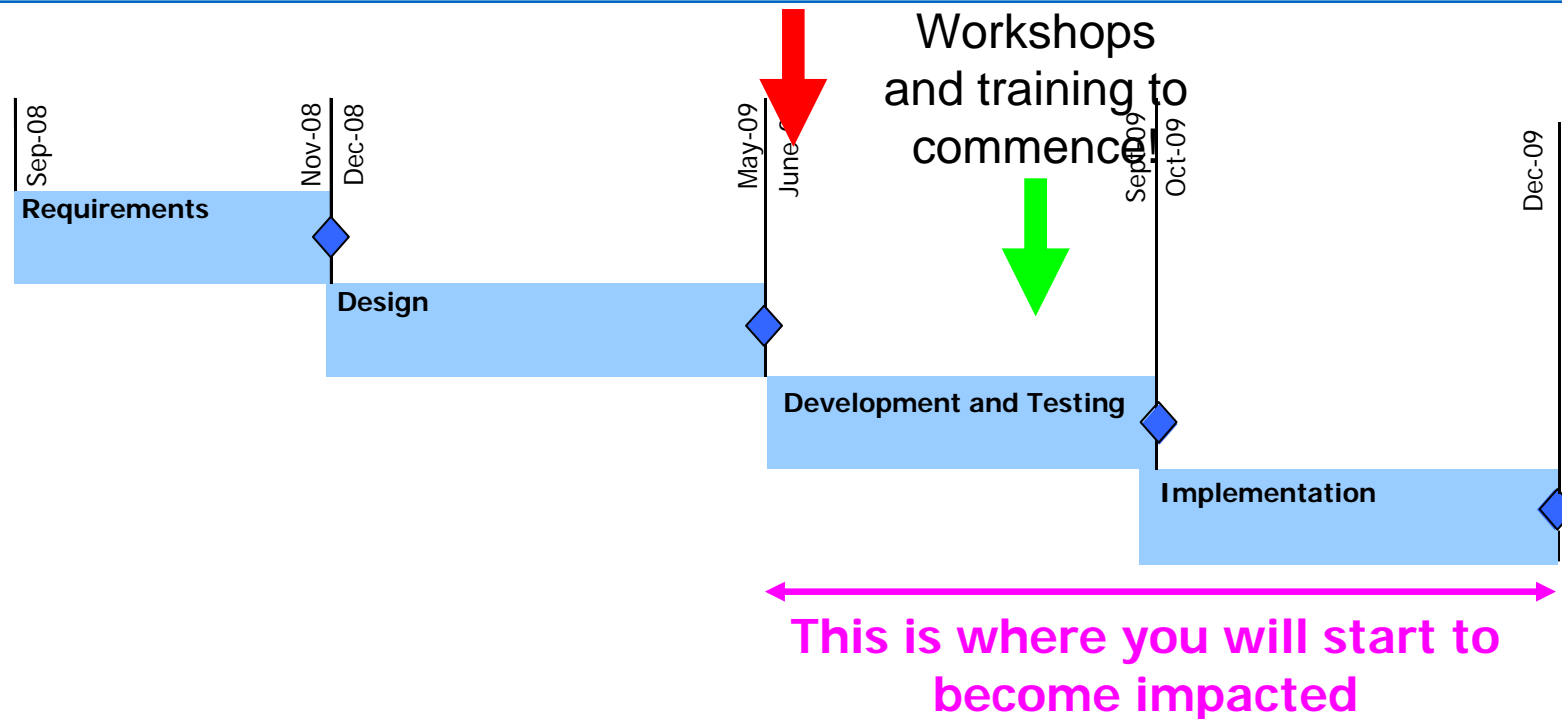
**Week Commencing 08/06/2009**

**nationalgrid**

The power of action.™

# MIPI Phase 2 Timeline

We are here!



- Anticipated “Go Live” date is 1<sup>st</sup> week in November 2009.
- A parallel run will take place for a period of four weeks prior to “Go Live”.
- You will have at least 4 weeks notice of the “Go Live” date and parallel run.

# MIPI Phase 2 Seminar – Tuesday 18<sup>th</sup> August

National Grid will be holding a MIPI Phase 2 seminar:

**Tuesday 18<sup>th</sup> August**

Elexon

350 Euston Road

NW1 3AW

- The morning session will cover Interface / Data / Report enhancements.
- The afternoon sessions will cover the new API functionality.

To register for this event please send an email to [Sysop.centre.reporting@uk.ngrid.com](mailto:Sysop.centre.reporting@uk.ngrid.com)

With subject “Market Information Seminar 18th August”.

**More details will be published shortly on the Operational Data Section of the Site**

<http://www.nationalgrid.com/uk/Gas/Data/...>

# Seminar Detail

## MIPI – Introduction

- The Team
- Who's Who
- What we do

## MIPI Phase 2

- Website Menu Changes
- Prevailing View Additions
- Data Item Explorer Additions
- Report Explorer (New Reports)
- Reports (Layouts)

## API

- API Registration & Functionality and Support

# MIPI Customer Helpline

## ➤ External Customer Experience : MIPI Customer support



### •Customer Helpline:

- Dial MIPI !

01926 6564 74

- 09:00 – 16:00, Monday to Friday
- Voicemail Service Out of Hours

• Most queries will be answered immediately

- 90% within 1 hour

• Standard response time < 24hrs

• Complex queries <= 10 working days

### •E mail service :

[Sysop.centre.reporting@uk.ngrid.com](mailto:Sysop.centre.reporting@uk.ngrid.com)

### •Feedback form



### •MIPI newsletter

### •User Forums



About the Gas Industry

Pipeline Projects

Connections

Operational Data

Privacy View

Badaltem Equipes

Report Equipes

Energy - Flow Data

Capacity - Monthly Reports

Capacity - Daily Reports

Exit Capacity Auctions

Exit Capacity

Capacity Summary

Storage Information

Operational Data

### Operational Data

#### Welcome to the Network Operations, Operational Data Site

This section of our site provides access to Operational Data to all relevant industry stakeholders. The aim of this site is to reduce market uncertainty, reinforce equal access to information, and increase information transparency, facilitating efficiency in the capacity and energy markets whilst providing equitable and timely access to its operational and market information.

Please forward any queries or suggestions, relating to the website, to Network Operations, through the **Feedback form**.

For data enquiries that require urgent attention, please contact us on our new number: 01926 65 6474. Please note that this service will only be available during office hours of 09:00 to 16:30 on weekdays. During out of office hours there is an answer phone service on this number.

Users can continue using the existing number 01926 656439 during office hours, however please note this number will not be in service from 1st June 2009.

### Recent News

- **Genab Disaster Recovery Testing – Xserve Update**  
20 April 2009

### Removal Of Links To Reports

Links to the old Energy Daily Reports, Information and Capacity Daily Reports are now listed in Supplementary help, or by using the link below.

- **Direct Links**

### Feedback

If you have any queries or suggestions relating to the Operational Data website, please forward them to Network Operations.

- **Operational Data**

**nationalgrid**

The power of action.™