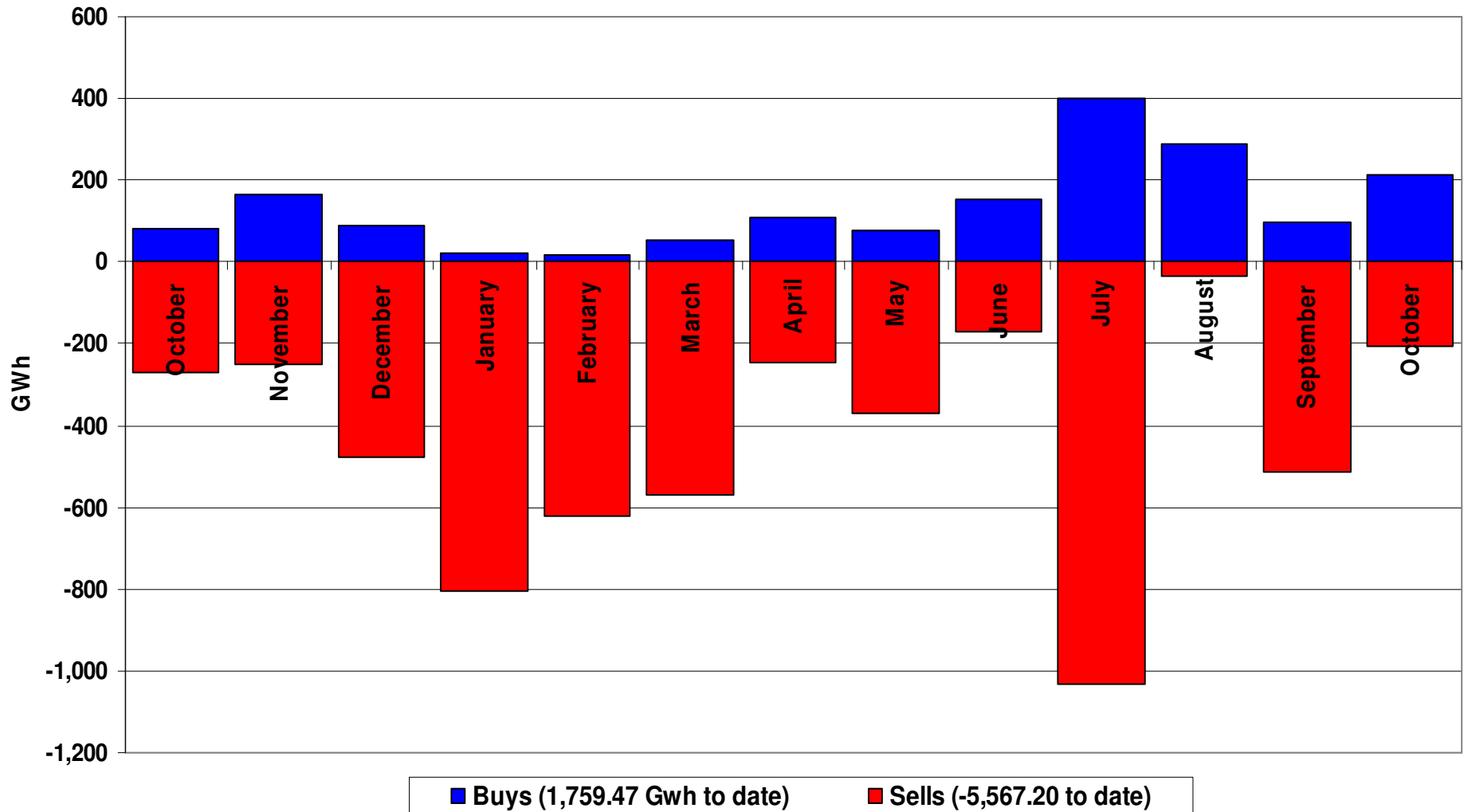


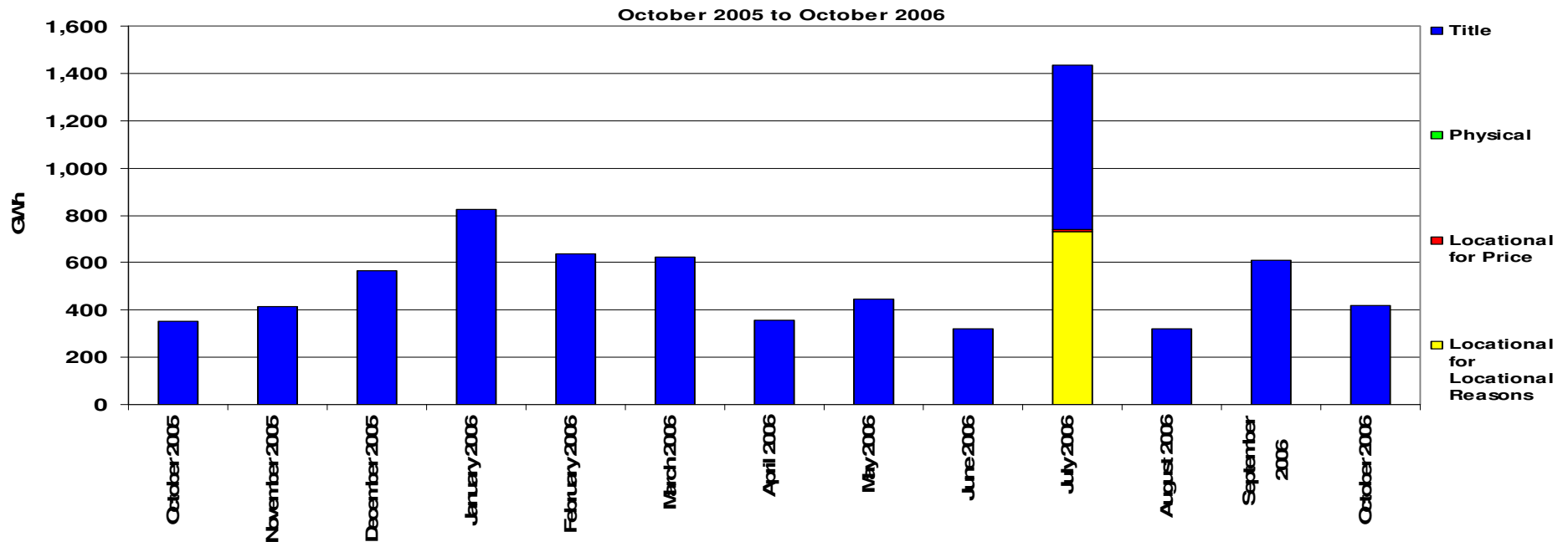
Performance of the Energy Regime

October 2006

Transporter Energy Traded Per Month



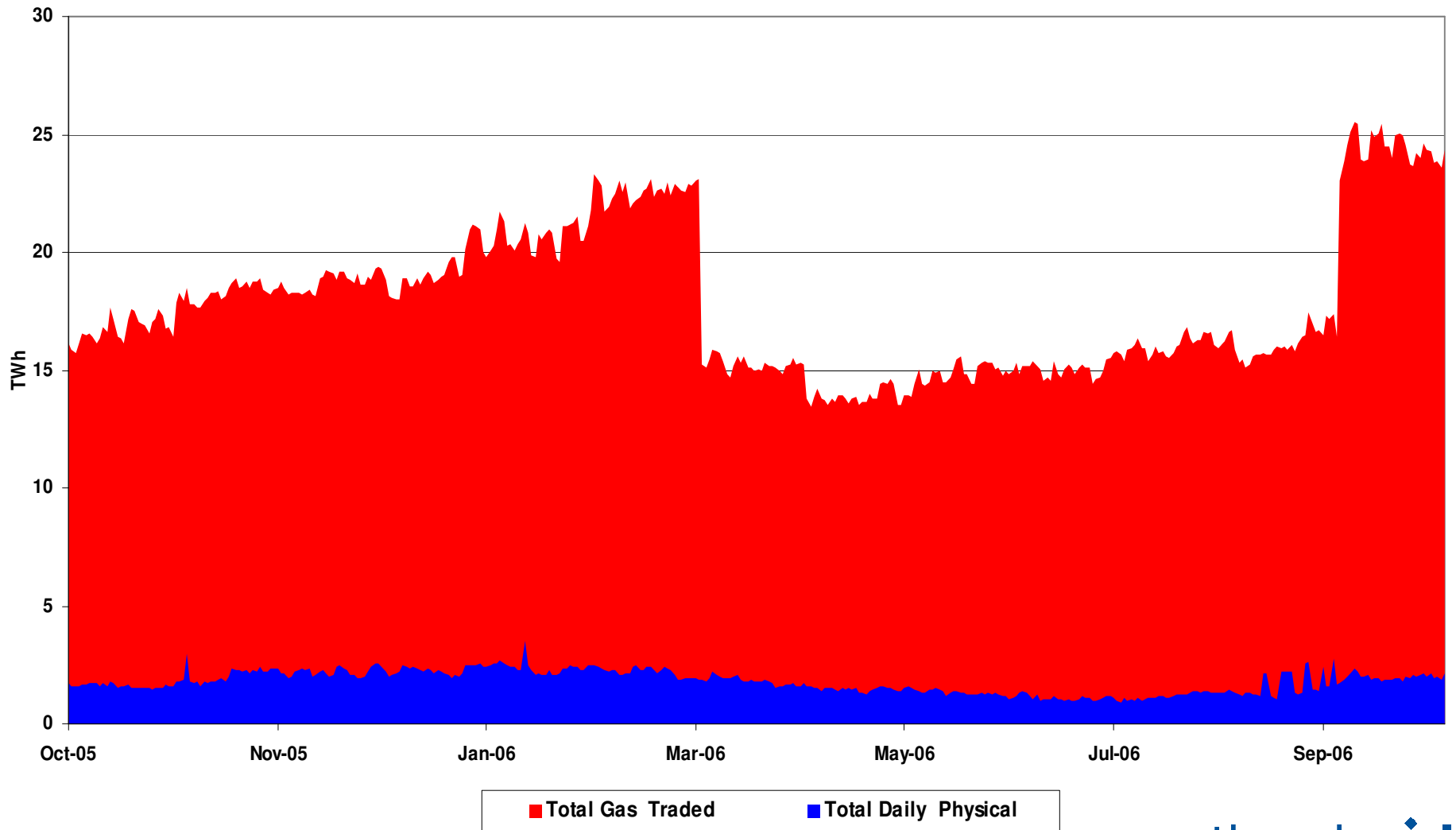
Monthly Energy Traded by Transporter on the OCM



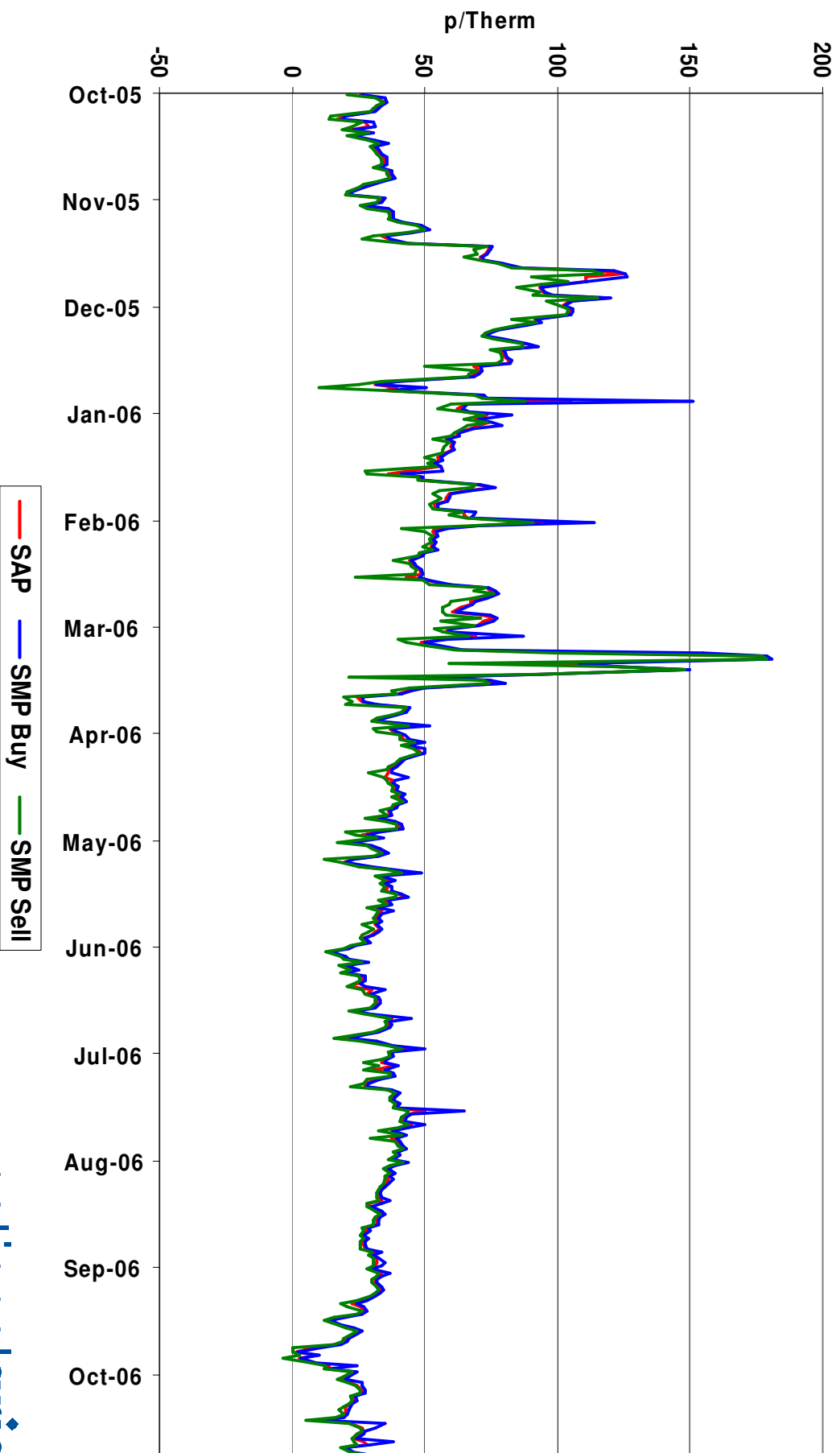
November all Markets = 414.58 Gwh
 December all Markets = 564.95 Gwh
 January all Markets = 825.17 Gwh
 February all Markets = 638.34 Gwh
 March all Markets = 623.22 Gwh
 April all Markets = 357.08 Gwh

May all Markets = 443.65 Gwh
 June all Markets = 322.67 Gwh
 July all Markets = 1,434.32 Gwh
 August all Markets = 321.73 Gwh
 September all Markets = 610.64 Gwh
 October all Markets = 420.15 Gwh

NBP Gas Trades

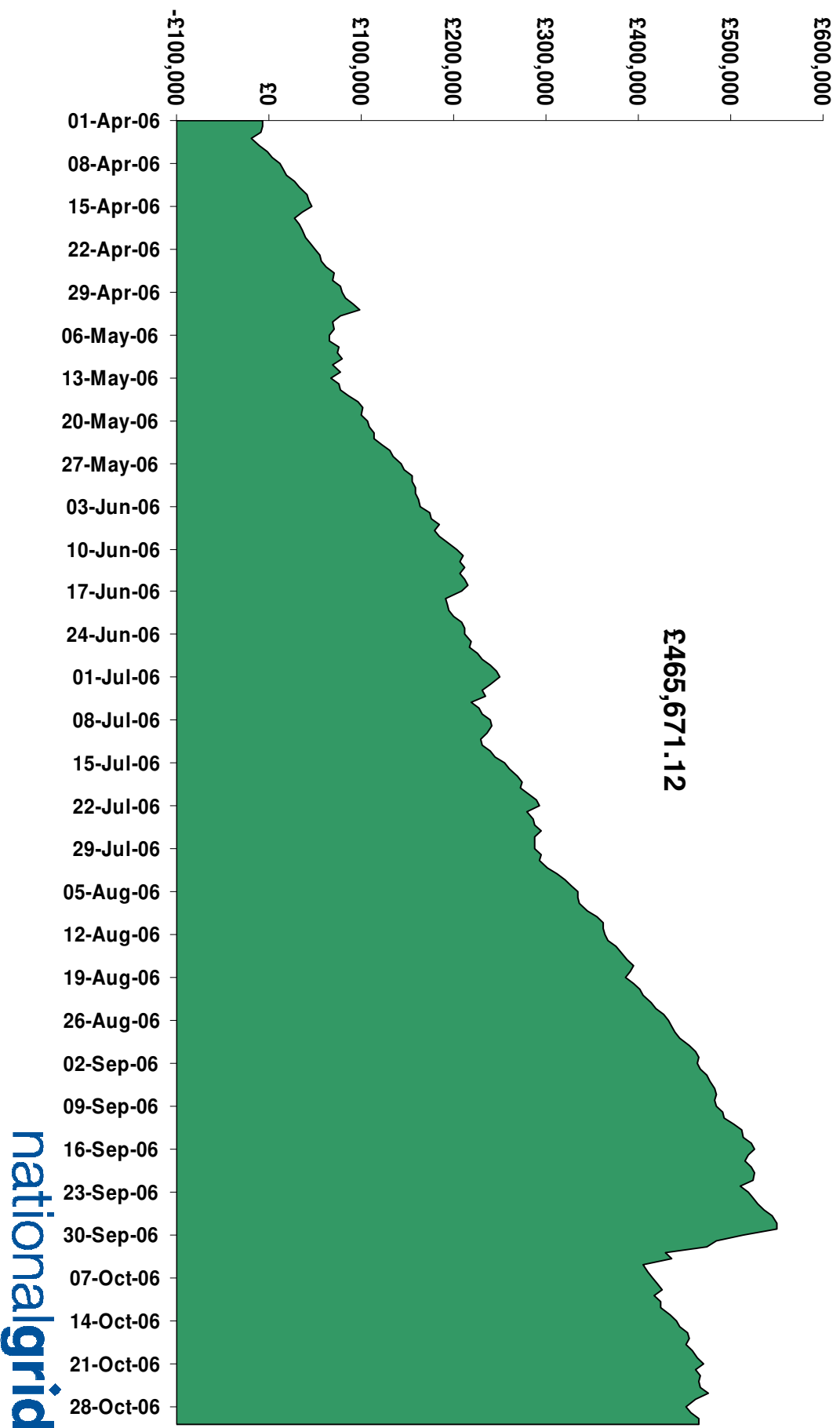


Gas Prices

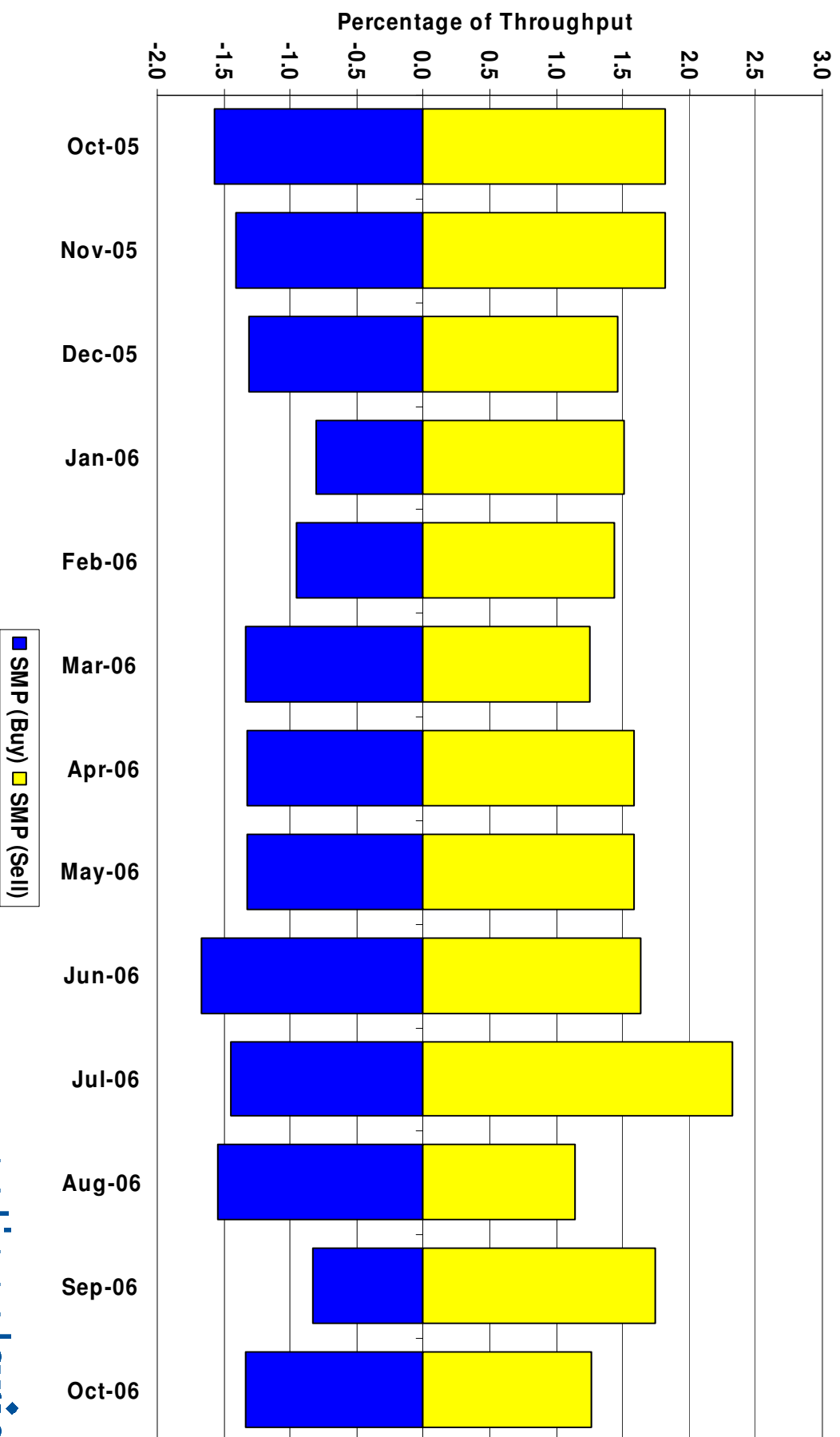


Energy Balancing Incentive

1st April 2006 to 31st October 2006



System Level Imbalance as a % of Throughput



Transporter Actions on OCM Mechanism Revenues / Costs

1st October 2005 to 30th September 2006

	Quantity (TWh)	Average (p/kWh)	Price (Therms)	Cost (£m)
System Buy	1.547	1.5729	46.08	£24.33
System Sell	-5.360	1.3606	39.86	-£72.93
Net Position	-3.813 Sell			-£48.60

Imbalance Gas Revenues / Costs

1st October 2005 to 30th September 2006

System	Quantity (TWh)	Average (p/kWh)	Price (p/therm)	Cost £m
System Buy	17.51	1.5744	46.13	£275.66
System Sell	-13.75	1.7735	51.96	-£243.94
Net Position	3.76 Buy			£31.72

Scheduling Revenues

1st October 2005 to 30th September 2006

	Cost £m
Input	-£5.13
Output	-£1.72
<hr/>	
Total	-£6.85

Balancing Costs

1st October 2005 to 30th September 2006

	£m
OCM/Flex Gas	(48.60)
Imbalance Gas	31.72
Scheduling	(6.85)
<hr/>	
Balancing Cost	(23.73)
(-0.0022p/kWh or -0.0634p/Therm of Throughput)	

Neutrality : Gas Year Comparison

(for October to September)

	Gas Year 04/05	Gas Year 05/06
Neutrality by Throughput (p/therm)	-0.0876	-0.0634

Days of Default SMP Prices

1st October 2006 to 31st October 2006

Percentage of Days of Default SMP

SMP Buy	SMP Sell	Both
71.0%	71.0%	48.4%

Transporter Actions on OCM Mechanism

Revenues / Costs

1st October 2006 to 31st October 2006

	Quantity (TWh)	Average (p/kWh)	Price (Therms)	Cost (£m)
System Buy	0.213	0.9627	28.20	£2.05
System Sell	-0.207	0.2357	6.91	-£0.49
Net Position	0.006 Buy			£1.56

Imbalance Gas

Revenues / Costs

1st October 2006 to 31st October 2006

System	Quantity (TWh)	Average (p/kWh)	Price (p/therm)	Cost £m
System Buy	1.11	0.5984	17.53	£6.64
System Sell	-1.17	0.7351	21.54	-£8.62
Net Position	0.06 Sell			-£1.98

Scheduling Revenues

1st October 2006 to 31st October 2006

	Cost £m
Input	-£0.08
Output	-£0.05
<hr/>	
Total	-£0.13

Balancing Costs

1st October 2006 to 31st October 2006

	£m
OCM/Flex Gas	1.56
Imbalance Gas	(1.97)
Scheduling	(0.13)
<hr/>	
Balancing Cost	(0.54)
(-0.0006p/kWh or -0.0179p/Therm of Throughput)	

Neutrality : Gas Year Comparison

(for October)

	Gas Year 05/06	Gas Year 06/07
Neutrality by Throughput (p/therm)	-0.0055	-0.0179