

# Frequency Response Requirement

## Total Frequency Response Requirements

Our indicative daily Total Requirement for Frequency Response for the Aug 07 is shown on a Settlement Period basis for weekdays, in Figure 1 and for Saturdays, Sundays and Bank Holidays, in Figure 2. The graphs show the requirement at maximum frequency deviation: 0.8 Hz for Primary and 0.5 Hz for Secondary and High Response.

Figure 1

*Indicative Total Response Requirement - Weekday*

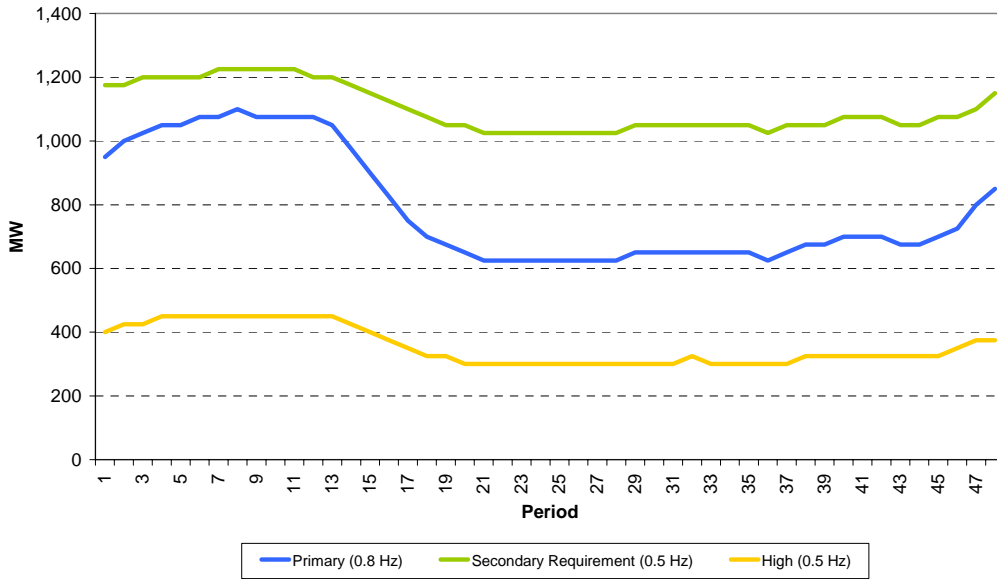
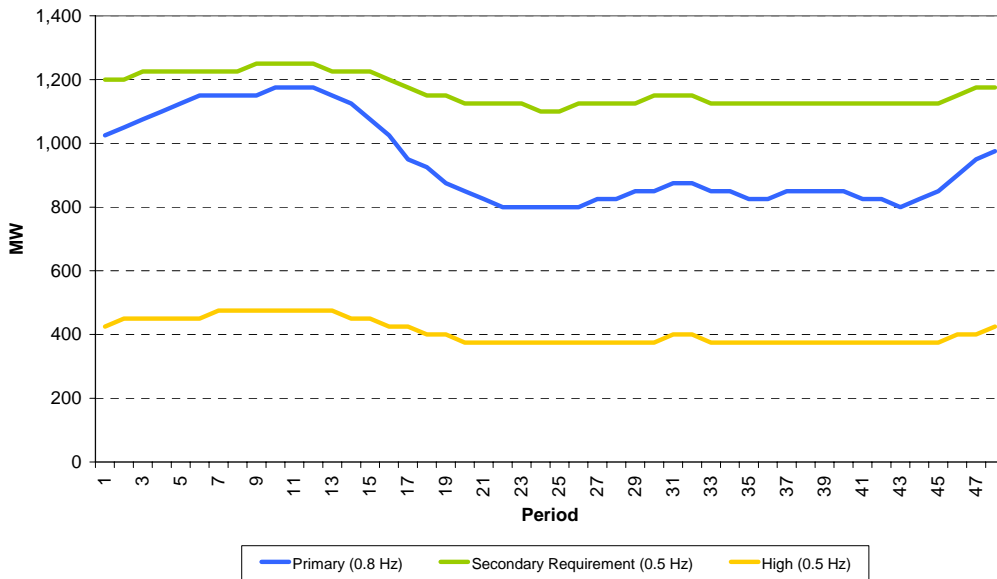


Figure 2

*Indicative Total Response Requirement - Weekend*



**Minimum Dynamic Response Requirement**

The indicative minimum required levels for Dynamic response are shown for Weekdays, Figure 3, and Saturdays, Sundays and Bank Holidays, Figure 4. The levels are shown for delivery at 0.5 Hz deviation, although 0.2 Hz is the largest frequency deviation within normal operational range. The total amount of response delivered by Dynamic providers contributes to meeting the Total Response Requirement, Figures 1 and 2, above.

*Indicative Minimum Dynamic Response Requirement - Weekday*

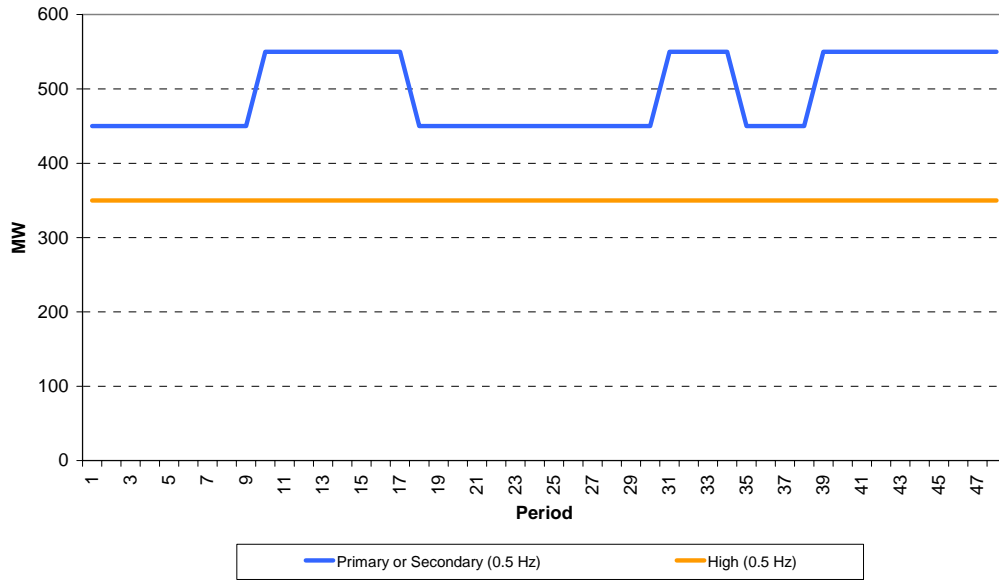


Figure 3

*Indicative Minimum Dynamic Response Requirement - Weekend*

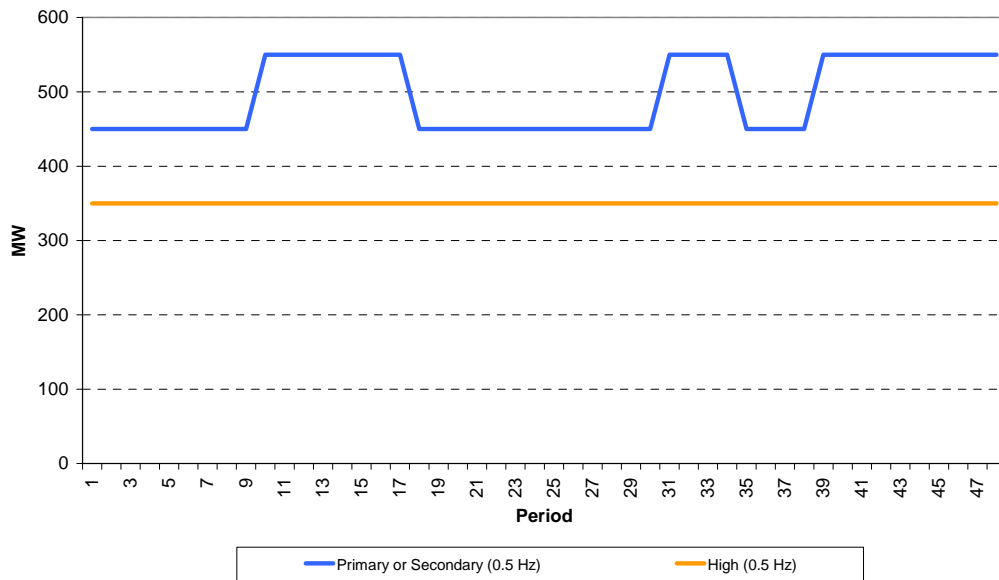


Figure 4